

COUNTY OF ERIE

EMERGENCY OPERATIONS PLAN (EOP)



2024

THIS PAGE INTENTIONALLY LEFT BLANK

**SECTION I – BASIC PLAN
TABLE OF CONTENTS**

SECTION I – BASIC PLAN 3

TABLE OF CONTENTS 3

FOREWORD..... 12

EXECUTIVE SUMMARY 13

General: 13

Organization:..... 13

Section I: 13

Section II:..... 13

Section III:..... 13

Section IV: 14

Section V:..... 14

SUMMARY OF CHANGES 15

CERTIFICATION OF BIENNIAL REVIEW 16

PROMULGATION..... **Error! Bookmark not defined.**

I. PURPOSE AND SCOPE 20

A. Purpose: 20

B. Scope: 20

II. SITUATION AND ASSUMPTIONS..... 21

A. Situation:..... 21

1. Geography 21

2. Community Facts 21

3. Transportation 22

4. Economy..... 23

5. Population..... 23

6. Housing and Households 23

7. Socioeconomics..... 24

8. Erie County Capabilities / Information Systems..... 24

9. County-Affiliated Volunteer Teams 25

10. Local Capabilities..... 26

The Basic Plan is a Public Document // For Wide Dissemination

County of Erie Emergency Operations Plan

11.	Regional Capabilities	26
12.	State Capabilities	28
13.	Federal Organizational Support	28
14.	Hazard Identification and Vulnerability	29
15.	The National Risk Index	30
16.	Social Vulnerability	32
	B: Assumptions	32
III.	CONCEPT OF OPERATIONS	34
	A: General:	34
1.	Incident Detection	34
2.	Political Subdivisions	35
3.	Intergovernmental Assistance	37
4.	Powers of the Erie County Executive	38
5.	Emergency / Disaster Declarations	39
	B: Erie County Multi-Agency Coordination Center (MACC):	41
1.	Incident Command / Municipal EOC / Erie County MACC Interface	41
IV.	ERIE COUNTY MACC ACTIVATION – RESPONSE AND RECOVERY	42
	A. Erie County MACC Activation	42
1.	Erie County MACC Legal Counsel Engagement	42
2.	Erie County MACC Operational Structure	42
3.	Erie County MACC Operational Status	43
4.	Erie County MACC Mobilization	44
5.	Erie County MACC Demobilization and Deactivation	44
	B. Erie County MACC Policy Group:	45
1.	Erie County MACC Policy Group Overview	45
2.	Erie County Executive	46
3.	Erie County Director of Public Safety	46
4.	Erie County Department Directors	47
5.	Erie County MACC Director	47
	C. Erie County MACC Support - Agency Representation:	48
1.	Erie County MACC Support – Agency Representation Overview	48
2.	Agency / Organizational Representatives General Roles & Responsibilities	48
	D. Erie County MACC Planning Section:	49
1.	Erie County MACC Planning Section Overview	49

County of Erie Emergency Operations Plan

- 2. **Erie County MACC Planning Section Chief** 49
- 3. **Erie County MACC Situation Unit** 50
- 4. **Erie County MACC Strategic Foresight Unit** 51
- 5. **Erie County MACC Documentation Unit**..... 51
- 6. **Erie County MACC Demobilization Unit**..... 52
- 7. **Erie County MACC Technical Specialists Unit** 52
- E. Erie County MACC Logistics Section**..... 52
 - 1. **Erie County MACC Logistics Section Overview** 52
 - 2. **Erie County MACC Logistics Section Chief** 53
 - 3. **Erie County MACC Resource Unit**..... 53
 - 4. **Erie County MACC Receiving / Distribution Unit** 54
 - 5. **Erie County MACC Ground Support Unit** 55
- F. Erie County MACC Public Information System** 55
 - 1. **Public Information System Overview** 55
 - 2. **Erie County MACC Public Information Officer** 56
 - 3. **Erie County MACC Joint Information Center** 56
- V. SITUATIONAL AWARENESS / COMMON OPERATING PICTURE**..... 56
 - A. Web-Based Incident Management Tools:**..... 56
 - 1. **Data Collection and Information Sharing Overview** 56
 - 2. **Computer-Aided Dispatch (CAD)** 57
 - 3. **WebEOC**..... 57
 - 4. **Electric Outage Reporting Systems**..... 58
 - 5. **HHS emPOWER Map**..... 58
 - 6. **ArcGIS Survey123** 58
 - 7. **5-1-1 PA**..... 59
 - 8. **PA 2-1-1**..... 59
 - B. Information Mapping, Display, and Dissemination:** 59
 - 1. **Erie County MACC Mapping and GIS Overview** 59
 - 2. **Homeland Security Infrastructure Foundation-Level Data (HIFLD)** 60
 - 3. **FEMA’s Resilience Analysis and Planning Tool (RAPT)**..... 60
 - 4. **CONNECT Explorer** 60
 - 5. **The National Weather Service (NWS)** 61
 - 6. **Erie County MACC Displays Overview** 61
 - 7. **Maps / Forms / White Boards** 61

County of Erie Emergency Operations Plan

8.	Community Lifelines.....	62
9.	Erie County MACC Information Dissemination Overview	65
10.	Erie County MACC Briefings.....	65
11.	Erie County MACC Situation Reports	65
12.	Erie County MACC Incident Support Plans.....	66
VI.	MULTI-TIERED COORDINATION OF UNMET NEEDS	66
A:	Public Sector Coordination:	66
1.	Municipalities within Erie County	66
2.	Erie County.....	67
3.	Northwest Pennsylvania Region	67
4.	The Commonwealth of Pennsylvania.....	68
5.	Federal Government.....	68
B:	Private Sector Coordination:	68
C:	Public Non-Profit Coordination:	69
D:	Resource Requests:.....	69
E:	Procurement of Resources:	70
F:	Logistics Staging Areas / Commodity PODs / Medical PODs:.....	70
G:	Communications:.....	71
H:	Administration / Reports:	71
VII.	TRAINING, EXERCISES, AND AFTER-ACTION REPORTS	72
A.	Training	72
B.	Exercises.....	72
C.	After-Action Reports	73
VIII.	CONTINUITY OF OPERATIONS.....	73
IX.	EOP ANNEXES	73
X.	EOP-RELATED SUPPORT PLANS	74
XI.	EOP DEVELOPMENT, MAINTAINANCE, AND DISTRIBUTION.....	74
A.	EOP Development and Maintenance	74
B.	Distribution.....	75
XII.	APPENDICES	76
APPENDIX A	77
A.	Authorities	77
B.	References.....	77
APPENDIX B	78

County of Erie Emergency Operations Plan

A. Terms and Definitions 78

APPENDIX C 85

A. EOP Distribution List 85

APPENDIX D 86

A. Map of Erie County 86

SECTION II – MACC SECTION-SPECIFIC ANNEXES

****Note: Exempt Under the Right-to-Know Law****

MACC POLICY GROUP

- County Executive (or designee)
- Public Safety Director (or designee)
- MACC Director (or designee)
- Agency / Organization Representatives (or designees)

MACC PLANNING SECTION

- Planning Section Chief
- Situation Unit
- Strategic Foresight Unit
- Documentation Unit
- Demobilization Unit
- Technical Specialists Unit

MACC LOGISTICS SECTION

- Logistics Section Chief
- Resource Unit
- Receiving / Distribution Unit
- Ground Support Unit

MACC PUBLIC INFORMATION SYSTEM

- Public Information Officer
- Joint Information Center

SECTION III – COMMUNITY LIFELINES

****Note: May be Exempt Under the Right-to-Know Law****

COMMUNITY LIFELINES SYSTEM

- Sectors
- Components
- Subcomponents

MACC COMMUNITY LIFELINES STATUS BOARD

- Status Board
- Data Collection Reports
- Critical Elements of Information
- Essential Elements of Information
- Impacts / Actions / Limiting Factors
- Lines of Effort
- Restoration of Services / Estimated Time to Green (E.T.G.) Determination
- Status Determination and Update Process
- Status Information Management System

SITUATIONAL AWARENESS AND COMMON OPERATING PICTURE

- Situation Reports
- Community Lifelines Information and Intelligence Sharing Process

SECTION IV – NOTIFICATION AND RESOURCE MANUAL

****Note: Exempt Under the Right-to-Know Law****

Erie County maintains notification and resource information in the CAD and WebEOC systems.

SECTION V – EOP-RELATED SUPPORT PLANS (Published Separately)

****Note: May be Exempt Under the Right-to-Know Law ****

****Note: May be Redacted or Provided a Referral to the Document Originator****

- Hazardous Materials / SARA Plans
- Emergency Action Plans for Hazard Potential Category 1 and 2 Dams
- Continuity of Government Plan / Continuity of Operations Plan
- Hazard Mitigation Plan
- Erie County Rail Safety Plan
- Special Events Plans
- Prison Plans
- School Plans
- Strategic National Stockpile Plan
- Pandemic Influenza Plan
- Regional Task Force Plan
- Volunteer Management Plan (to be developed)
- Donations Management Plan (to be developed)
- Animal Care and Control Plan (to be developed)
- Mass Casualty Incident Plan
- Mass Distribution Commodities Plan
- Erie County Department of Health's All-Hazard Plan
- Department-Specific Operations Plans (as available)

THIS PAGE INTENTIONALLY LEFT BLANK

FOREWORD

The foundation of effective disaster response and recovery, within Erie County, begins with strong local jurisdictional emergency management programs at the city, township, borough, and regional levels. Erie County's emergency management program supports the municipal/regional programs and efforts with additional coordination of resources and planning. The stronger the city, township, borough, or regional emergency management program, the better prepared the community will be to respond to and recover from disasters. Our success in effectively responding to and recovering from a disaster occurs long before the disaster strikes. Engaging in preparedness activities such as collaborative planning, training, exercising, assembling equipment and supplies caches, and building partnerships before a disaster strikes, greatly determines the successes or failures of disaster response and recovery.

In concert with the National Planning Frameworks, local governments, local first responders, non-profits, faith-based organizations, schools, businesses and industries, and individual citizens all have roles and responsibilities concerning disaster preparedness, response, recovery, and mitigation.

The Erie County Emergency Operations Plan (EOP) describes how Erie County government will respond to a disaster or other emergency. Commonwealth of Pennsylvania law mandates each municipality to establish and maintain an emergency management program. The programs must include an Emergency Management Coordinator, Emergency Operations Center with trained staff, and an Emergency Operations Plan. All disasters begin and end at the local jurisdictional level. The Erie County Emergency Operations Plan (EOP) outlines how Erie County Government complies with and implements the requirement of the Pennsylvania Emergency Management Services Code to protect the lives and property of the citizens of the county. The county EOP serves as a bridge between the Local Municipal Emergency Operations Plan and the Pennsylvania State Emergency Operations Plan (SEOP).

As General Eisenhower said, "Plans are nothing; planning is everything." Our planning efforts need to be inclusive of all county government departments, agencies, and partners, as do our training and exercises. Thus, providing a 'whole-of-community' approach to emergency management in Erie County.

In early 2020, the world was presented with a global pandemic (COVID-19) which ultimately impacted Erie County. Like any disaster, this pandemic offered insight into the effectiveness of our prior preparedness efforts and shed light as to where we can improve. The update of the Erie County Emergency Operations Plan incorporates some of the lessons learned during the COVID-19 pandemic.

EXECUTIVE SUMMARY

General:

- The County of Erie utilizes a Multi-Agency Coordination Center (MACC) organizational structure within the County of Erie Emergency Operations Center.
- All emergency response activities within the county will utilize the National Incident Management System (NIMS).
- This plan employs a Multi-Agency Coordination (MAC) structure that includes a MACC Policy Group, a MACC Director, a Planning Section, a Logistics Section, a Public Information System (PIS), and agency / organization representatives.

Organization:

- Published or maintained separately, this plan contains five sections. This allows users to separate those portions that may contain personal or confidential information (e.g. the items in Section IV).

Section I:

- The Basic Plan describes procedures and principles for organizing incident response throughout the county. It contains overarching structures and assigns responsibilities to various organizations in the county.
- The Appendices provide additional information that will be helpful during an incident response (e.g. definitions, explanation of terms, maps, etc.).

Section II:

- The MACC Section-Specific Annexes contain functional annexes for the MACC Policy Group, the MACC Planning Section, the MACC Logistics Section, and the Public Information System. These functional annexes describe the structure of each MACC section, position-specific responsibilities, and position-specific checklists and job aids within each MACC section.

Section III:

- Community Lifelines Status provides incident-specific data and information pertaining to operational systems status and interdependencies of critical infrastructure and key resources (CI/KR), in real time, to obtain situational awareness and a common operating picture of the extent of impacts of incidents. Obtaining the Community Lifelines Status assists MACC personnel in making informed, timely, and critical decisions in support of the incident.

Section IV:

- The Notification and Resource Manual (NARM) contains a listing of resources, facilities, personnel, equipment, and supplies that are available to the county. The NARM also includes contact information needed to procure resources for use during an emergency and information pertaining to Critical Infrastructure and Key Resources (CI/KR). Generally, the Pennsylvania Right-to-Know act excludes these items, as well as from release to the public.

Section V:

- EOP- Related Support Plans depend on the Erie County EOP for assignment of responsibilities and operational principles. The EOP-Related Support Plans may supplement this plan during specific disasters and other emergencies.
- Due to regulatory requirements or specific hazards, the EOP-Related Support Plans should function as stand-alone plans.
- Some of the related plans contain personal or sensitive information and are exempt from the provision of the Right-to-Know act, and from release to the public.

SUMMARY OF CHANGES

CHANGE NUMBER	DATE OF CHANGE	DATE ENTERED	CHANGE MADE BY (SIGNATURE)

CERTIFICATION OF BIENNIAL REVIEW

Prior to Certification:

The Erie County Emergency Management Coordinator Reviewed this Version of the Plan

Date	Signature

THIS PAGE INTENTIONALLY LEFT BLANK

County of Erie Emergency Operations Plan

RESOLUTION NUMBER 11 2024

Approving the 2024 Erie County Emergency Operations Plan

WHEREAS, the Commonwealth of Pennsylvania, Emergency Management Services Code 35 Pa C.S. as amended, directs and authorizes each political subdivision of the Commonwealth to establish a local emergency management organization and to develop a comprehensive emergency operations plan; and

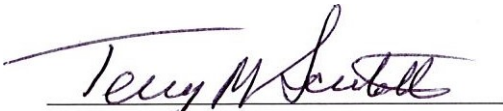
WHEREAS, each emergency management organization shall have the responsibility for emergency management activities involving awareness, prevention, preparedness, mitigation, response and recovery in order to provide for the safety, health and welfare of the residents of Erie County; and

WHEREAS, Erie County Emergency Management has been delegated to develop and maintain the Erie County Emergency Operations Plan to outline basic operations and procedures to be implemented in the event of an emergency incident, either man-made or natural, that requires the response of Erie County Emergency Management or other County Departments or County Agencies; and

WHEREAS, the Erie County Emergency Operations Plan is designed to comply with applicable Commonwealth and County laws and or regulations; provides for policies and procedures to be followed during times of natural or man-made disaster.

THEREFORE, BE IT RESOLVED, by the County Council of the County of Erie that Erie County hereby adopts in principle the recommendations set forth in the Erie County Emergency Operations Plan.

On the motion of —Schauerman—, seconded by —Horton—, this resolution was passed on this 14th day of May, 2024 by a vote of 7 to 0.



Terry M. Scutella, Chairman
Erie County Council

APPROVED
BY:



Brenton Davis,
County Executive

Date: 5/15/24

ATTEST:



Karen Chillcott
Erie County Clerk

Date: 5- / 9-dY

THIS PAGE INTENTIONALLY LEFT BLANK

I. PURPOSE AND SCOPE

A. Purpose:

1. This plan prescribes the roles and responsibilities of municipalities, regional EMAs, specialized operational teams (Haz-Mat, CERT, RACES), and county government to coordinate and support incident response activities and the Erie County community-at-large.
2. This plan interfaces with political subdivisions and the Commonwealth government for purposes of protecting lives and property in the event of a natural, technological, or human-caused incident.
3. This plan serves to satisfy the requirements of the Pennsylvania Emergency Management Services Code.
4. This plan incorporates NIMS and the components of the National Planning Frameworks.
5. This plan is an 'All-Hazards' plan which incorporates a 'Whole-of-Community' approach in Erie County.
6. This plan outlines the use and implementation of the Multi-Agency Coordination Center (MACC) model.

B. Scope:

1. This plan applies to incidents where county-level support is appropriate, within Erie County.

II. SITUATION AND ASSUMPTIONS

A. Situation:

1. Geography

- a. Located in the extreme Northwestern portion of Pennsylvania, Erie County encompasses a land area of 799.1 square miles, 77 miles of Lake Erie shoreline, and 750 square miles of Lake Erie waters . Additionally, Erie County is the 23rd largest county by the total land area. Combining the total land area with the total water area, Erie County’s geographical space is the largest county in Pennsylvania. Erie County Pennsylvania borders Chautauqua County New York to the East, Ashtabula County Ohio to the West, Canada to the North across Lake Erie, Crawford County to the South and Warren County to the Southeast. The City of Erie, located in the north central portion of the county, is the county seat. Forests comprise approximately 335.6 sq. miles (42%) of the county, 239.7 sq. miles (30%) is farmland, 101.6 (12.7%) sq. miles is residential, and 61 (7.6%) sq. miles is industrial / commercial. Of the total county land, 97.1 sq. miles or 12.3% are urban settings and 702 sq. miles or 87.9% are rural areas. Two primary watersheds are in Erie County: Lake Erie and French Creek. Waters in the Lake Erie Watershed flow first into Lake Erie and then to Lake Ontario before reaching the Atlantic Ocean via the St. Lawrence River. The French Creek Watershed is a part of a larger system that includes the Allegheny, Ohio, and Mississippi watersheds. The French Creek Watershed drains many of the southeastern portions of the county (ECPCD, 2018).

2. Community Facts

- a. There are 38 municipalities within Erie County, which consists of 22 townships, 14 boroughs, and 2 cities. Critical entities throughout Erie County include 13 public school districts, 32 municipal fire departments, 1 airport fire department, 10 municipal police departments, 3 state police barracks (PSP Erie, co-located with Troop E Headquarters in Lawrence Park, PSP Girard, and PSP Corry). Additional PSP presence include the Gaming Enforcement at the Casino (a branch of PSP), Liquor Control Enforcement (LCE Summit, a branch of PSP). Erie County has 5 EMS agencies. A variety of hospitals and hospital systems serve Erie County. The Pennsylvania Department of Health (PASDA, 2023) listed seven hospitals in Erie County as of March 2022, with a combined bed capacity estimated at 1,230 beds (*Table 1.0*). Erie County hosts 22 drug and alcohol facilities, 18 long-term care facilities, 18 assisted living facilities, 18 retirement communities, 142 childcare providers, 4 universities, and 1 osteopathic medicine college. Correctional facilities in Erie County include the State Correctional Institute Albion and the Erie County Prison. Several federal organizations, including Customs and Border Patrol, Coast Guard, Federal Bureau of Investigations, and others maintain offices in Erie County. There are 248 Tier II reporting facilities and 81 EHS facilities within Erie County. The County has 14 permitted dams.

The Basic Plan is a Public Document // For Wide Dissemination

Hospitals in Erie County

Facility Name	Facility Type	Estimated Bed Capacity	Trauma Center Designation	Stroke Center Designation
UPMC Hamot	9-1-1 Receiving	458	Level II (Adult)	Comprehensive Stroke Center
AHN Saint Vincent Hospital	9-1-1 Receiving	348	N/A	Primary Stroke Center
LECOM Millcreek Community Hospital	9-1-1 Receiving	167	N/A	Primary Stroke Center
LECOM Corry Memorial Hospital	9-1-1 Receiving	20	N/A	N/A
Encompass Health Rehabilitation Hospital	In-Patient Only	100	N/A	N/A
Select Specialty Hospital - Erie	In-Patient Only	50	N/A	N/A
VA Medical Center - Erie	Veteran Specific	87	N/A	N/A

Table 1.0 – Hospitals and Hospital Systems Located Within Erie County

3. Transportation

- a. There are 814.7 linear miles of state and federal highways, including Interstates 90, 79, and 86. U.S. Routes 6, 6N, 19, and 20, as well as State Routes 5, 8, 18, 77, 89, 97, 98, 99, 215, 226, 290, 426, 430, 474, 505, 531, and 832 are also primary thoroughfares. Additionally, there are 1,787.9 linear miles of local municipal roads in the county. Erie County has one major airport, Erie International Airport (ERI), served by 2 commercial air carriers (United and American Airlines) operating about 10 daily flights to and from Erie and a Fixed-Based Operation (FBO), North Coast Air. Nearly a quarter of million pounds of cargo passes through the airport every year. The airport has two runways (east / west): 6-24 (8,420 feet long) and 2-20 (3,508 feet long) both 150 feet wide. Additionally, Erie County has 17 smaller private and public airports. Erie County has three Class I railroads owned by CSX, Norfolk Southern, and Canadian National / Bessemer & Lake Erie Railroad. There is also one regional railroad operator, BUFFALO & PITTSBURGH R.R., INC. Genesee & Wyoming, Inc. and Western New York & Pennsylvania also conduct freight rail operations in the county. There are also several local line haul / switching and terminal railroads. Amtrak runs through Erie County on the CSX tracks, as well. Erie County is also the home to the Port of Erie with an entrance channel depth of 29 feet.

4. Economy

- a. Erie County has 202 orchards, the most statewide, occupying 12,286 acres. As part of the Lake Erie Wine Region, the county hosts 176 grape farms, on 11,915 acres. Annually, Erie County produces 63,600 tons of grapes, which makes up 72% of statewide grape production. In the agricultural sector of fruits, tree nuts, and berries, the revenue is more than \$24.6 million. Out of 66 counties in PA producing these items, Erie County ranks second.
- b. Established by 19 municipalities across Erie County, including 18 townships and 1 rural borough, more than 75,000 acres of Agricultural Security Areas (ASAs) exist to encourage, promote, preserve and protect normal farming operations. Erie is also home to Presque Isle State Park, which hosted 4.9 million visitors in 2021. The fishing industry in Erie County significantly influences recreation and the economy. In 2016, the primary and secondary economic impact of the fishing industry fishing was \$40.6 million.
- c. As of 2020, Erie County was home to 6,055 employer establishments. The top three employers in Erie County are Erie Indemnity Co (Erie Insurance), UPMC Hamot, and Wabtec US Rail Inc. The top three industries are Insurance, Hospitals, and Plastics. Across the county, total employment numbers consist of 148,299 people working in 324 industries. The 2021 GDP for Erie County was over \$12.8 billion.

5. Population

- a. According to the 2020 U.S. Decennial Census, the population of the County is 270,876 with 20% of the population residing in rural areas and 80% of the population residing in urban areas. Erie County's population has an average population density of 339 people per square mile. 15.2% of Erie County's population have functional and / or access needs. Of the 15.2% of the county's population with functional and / or access needs, 6.7% are under 18 years of age and 33.8% are over 65 years of age. Within Erie County, 2.6% of the population speaks English "less than very well," with 42.5% of these "less than very well" English speakers being foreign born.

6. Housing and Households

- a. Erie County has 119,948 housing units, of which, residents currently occupy 109,371 housing units. About 8.6% or 10,420 units of the total housing units are vacant. Statistics depict that construction of 41.4% of the housing units occurred before 1960. Erie County has 110,561 households, and of those, 25.0% contain

children under 18 years of age. Residents of 65 years of age live within 34.2% of households.

7. Socioeconomics

- a. Median household income in 2021 dollars is \$55,949 per year. Per capita income in the past 12 months, in 2021 dollars, was \$30,715. 15.8% of the county population lives in poverty. There are 24 USDA designated food deserts in Erie County: 19 in the City of Erie, 2 in Millcreek, 1 in Edinboro, 1 in Corry, and 1 in Lake City/Girard.
- b. There are 55,181 Medicare beneficiaries in Erie County, of those, 2,651 are electricity dependent. Erie County Department of Human Services (DHS) has approximately 230 residential sites throughout Erie County, serving approximately 1,700 individuals who may require special assistance during an emergency.

8. Erie County Capabilities / Information Systems

- a. The Erie County Department of Public Safety's facility includes, in part, the Erie County 9-1-1 Public Safety Answering Point (PSAP), the Erie County Multi-Agency Coordination Center (MACC), Erie County Emergency Management's incident support equipment and supply resources, the Erie County Haz-Mat Team's specialty-vehicles, and spill trailers.
- b. The county is currently undergoing a multi-year, multi-phase dispatch center consolidation with an undetermined time of completion. At this time, the County 911 center serves as an Emergency Communication hub (911 PSAP) for the entire county.
- c. The Northern Tier 9-1-1 cooperative group have migrated to the use of Tyler New World Computer Aided Dispatch (CAD) system that will assist in resource inventory, resource management and notifications not just within Erie County, but also within all of Northwestern Pennsylvania.
- d. The countywide UHF P25 Phase II Digital trunked, simulcast radio system allows for inter-operability among public safety agencies.
- e. The Erie County Department of Health's capabilities provide specialized expertise to support Erie County's incident support in many subject areas, including but not limited to, Public Health Preparedness and Environmental impacts.

County of Erie Emergency Operations Plan

- f. The Erie County Department of Human Service's capabilities provide specialized expertise to support Erie County's incident support in many subject areas, including but not limited to, crisis services and children and youth services.
- g. Erie County and the NWPA Emergency Response Group region adopted the state's WebEOC incident management system.
- h. Emergency information transmission occurs via communications systems that include, but are not limited to, iPAWS, EAS Messages, all-hazards sirens, social media, etc.
- i. Erie County maintains a social media presence on Facebook, Twitter, and Instagram.
- j. The Erie County Website (www.eriecountypa.gov) provides incident-related information and resources for the public.
- k. The amateur radio system provides a mechanism for licensed amateur radio operators to report real-time weather information and incident-specific information to the Erie County MACC, at the request of the Erie County MACC Director.

9. County-Affiliated Volunteer Teams

- a. Hazardous Materials Team: Provides hazardous materials mitigation to support fire, police, and EMS response incidents involving chemical, biological, and radiological substances.
- b. Auxiliary Communications Services (ACS): Provides supplemental and catastrophic communications back-up capabilities.
- c. Community Emergency Response Team (CERT): Provides supplemental assistance including but not limited to damage reporting, light Search & Rescue, medical support, logistical support, Emergency Operations Center support, assist in educating the public about disaster preparedness, and all other duties as assigned. Erie County Emergency Management coordinates activations and deployments.
- d. Critical Incident Stress Management (CISM) Team: Provides a full range of consultation, individual and group support to first response teams and organizations after a work-related trauma such as a line of duty death, sudden loss, multiple casualty event, or events involving children. Team activations occur through a request on the CISM hotline.

County of Erie Emergency Operations Plan

- e. Disaster Crisis Outreach & Referral Team (DCORT): Provides individual and group support for the civilian population after events that impact communities, such as storms, deaths, evacuations and other disasters. Activation of the team occurs by contacting the CISM Hotline, the Erie County Department of Human Services, or the Erie County Crisis Services line.

10. Local Capabilities

- a. Erie Police / Regional Bomb Squad: Provides explosive device mitigation services.
- b. Erie and Millcreek Police SWAT teams: Provides tactical response to incidents, such as active shooters, hostage situations, etc.
- c. Collapse Search & Rescue: Several entities have trained personnel and various levels of equipment to respond to collapse search & rescue incidents, including Erie County CERT, the Regional USAR Element of the PA Task Force, and a few volunteer fire departments throughout Erie County.
- d. SCUBA / Water Rescue Teams: Several fire departments provide limited water rescue capabilities and dive recovery services within Erie County. Lake City and West Lake Volunteer Fire Departments have a sea-legs watercraft; Lake Shore Volunteer Fire Department has a 32' Aggressor boat with two 225 horsepower engines; North East Crescent / Fuller Volunteer Fire department has a 25' Safe boat with two 225 horsepower engines; The City of Erie has a 25' Proline boat with a 300 horsepower engine.
- e. Canine SAR / Cadaver: Several teams provide various types of K-9 capabilities for tracking, search and recovery.
- f. The NWPA Emergency Response Group has worked with the ANNA Shelter to assist in providing pet sheltering during disasters that displace a large number of residents.

11. Regional Capabilities

- a. The Northwest Pennsylvania Emergency Response Group (NWPARG), aka "Regional Task Force", comprised of Erie, Crawford, Warren, Forest Counties, and the City of Erie, supports the NWPA Region through an Intergovernmental Cooperation Agreement and / or through the provision of the intrastate mutual aid agreement (Act 93). Mutual aid, equipment and supplies resource support, and trainings and exercises are all strengths of the coordinated and collaborative efforts of the NWPARG.

County of Erie Emergency Operations Plan

- b. Specialized Teams (sponsored by the NWPAERG):
 - 1. NWPAERG Urban Search & Rescue (USAR) Element (a component of PA Task Force-2): Provides a limited USAR capability until other USAR components can arrive. PEMA is also capable of dispatching this regional team.
 - 2. NWPAERG Swift Water Rescue Team (Type 1a): Comprised of independent swift water rescue elements from around the region.

- c. Additional Teams and Organizations:
 - 1. The Northwest Pennsylvania Medical Reserve Corps (NWPA MRC): Comprised of personnel from multi counties provide support to hospitals, health departments, long-term care facilities, and at Points-of -Dispensing (PODs).
 - 2. Salvation Army: Erie's Salvation Army unit assists with food service, shelter, emergency assistance, donations management, emotional and spiritual care, communications, disaster case management, clean-up, and reconstruction services.
 - 3. American Red Cross: Provides immediate necessities such as food, clothing, and shelter based on the magnitude of the incident. The American Red Cross operates mass care shelters and feeding (fixed and mobile), nursing, disaster mental health, logistics, bulk distribution, and coordination of services. The American Red Cross also provides clean-up kits following flood events.
 - 4. EMMCO West has a number of resources including a CISM team, an EMS Strike Team, a Mass Casualty Incident (MCI) Trailer, a Medical Surge Equipment Cache (a mobile hospital for non-critical patients), and a Mobile Medical Surge System (MMSS) that provides versatile, multi-function shelter systems with heating and cooling systems.
 - 5. The Northwest Pennsylvania Volunteer Organizations Active in Disasters (NWPA VOAD), consisting of faith-based organizations and non-governmental organizations, may assist the community with supportive needs following disasters.

12. State Capabilities

- a. State Medical Assistance Team (SMAT): Comprised of medical and non-medical personnel from 14 counties. Can set-up and operate a field hospital, and has a mobile unit. The full cache is located in Indiana, PA.
- b. Pennsylvania Army National Guard (PANG): Provides assistance, including a liaison, to the county MACC. The Cambridge Springs Readiness Center in Crawford County is home to PANG's local unit.
- c. Pennsylvania State Police (PSP): Provides law enforcement assistance. PSP also has a 33-foot Safe boat on Lake Erie, and can provide air assistance from their helicopter stationed in Franklin, PA.
- d. Pennsylvania Emergency Management Agency (PEMA) maintains a small inventory of generators, light towers, a communications van, camera trailers, etc. available upon request.
- e. Pennsylvania Department of Transportation (PennDOT) provides assistance with detours, and can provide a liaison to the Erie County MACC.
- f. Pennsylvania Department of Environmental Protection (DEP), with the Northwest Regional Office in Meadville, PA., provides assistance with protecting air, land, and water from pollution, and can provide a liaison to the field or to the Erie County MACC.
- g. Pennsylvania Department of Agriculture (PDA), with the Region-1 Office in Meadville, PA., provides assistance with protecting human, animal, environmental, and plant health, and can provide a liaison to the field or to the Erie County MACC.
- h. Pennsylvania Department of Human Services (DHS), as the ESF-6 Mass Care Lead, provides assistance with mega-shelter operations. In Erie County, Edinboro University is the pre-determined mega-shelter location, should the need for opening a mega-shelter arise, and at the direction of the Erie County MACC Director.

13. Federal Organizational Support

- a. The National Disaster Medical System (NDMS): Comprised of Disaster Medical Assistance Teams (DMAT), Disaster Mortuary Response Assistance Teams (DMoRT), Disaster Veterinary Assistance Teams (NVRT), Logistics Response Assistance Teams (LRAT), International Surgical Response Assistance Teams

The Basic Plan is a Public Document // For Wide Dissemination

County of Erie Emergency Operations Plan

(IMSuRT), and a few mission-specific resources: Provides medical support through a federal resource request process. Erie County is home for DMAT PA-3. DMAT PA-3 does not have an equipment cache locally.

- b. Civil Air Patrol (CAP): Provides fixed wing air support, including SAR and other observation capabilities. To request CAP Erie County must contact the Commonwealth Resource and Coordination Center (CRCC).
- c. United States Coast Guard (USCG) Station Erie: The station currently has a 47' MLB, 25' RB-S and an Ice rescue skiff. The command structure has a BMC as the Officer in Charge, with a BM1 as the Executive Petty Officer, and an MK1 as the Engineering Petty Officer. The station's area of operations cover 800 square miles of Lake Erie.
- d. United States Border Patrol Station Erie: The station has several officers and vehicles that patrol throughout the region.
- e. The Federal Bureau of Investigation (FBI): The FBI has resources throughout the region.
- f. The United States Department of Agriculture (USDA): The USDA Farm Service Agency (FSA) provides disaster assistance, safety net, farm loan, and conservation programs. The USDA Natural Resources Conservation Service (NRCS) provides financial assistance, technical assistance, and easement programs for conservation on working lands. Both of these USDA entities have offices in Waterford, PA.

14. Hazard Identification and Vulnerability

- a. Erie County is subject to a variety of threats and hazards. In 2019, Erie County EMA staff updated the Hazard Vulnerability Analysis (HVA) using a new assessment tool. The new assessment tool uses seven categories to determine the risk. The categories include probability, impact, warning time, response duration, recovery duration, preparedness, and spatial extent. Erie County EMA staff identified and ranked 49 different natural, technological, and human-caused threats and hazards. Table 2.0 denotes the ten most likely damaging threats and hazards, according to the 2019 HVA.

Top 10 Threats and Hazards in Erie County

Rank	Threat / Hazard	Rank	Threat / Hazard
1	Waterway Contamination	6	Earthquake (5.0 – 6.0 magnitude)
2	Train Derailment	7	Water Disruption (1-month)
3	Water Disruption (72-hours)	8	Tornado (F2 - Enhanced Fujita Scale)
4	Cyber Attack – Critical Infrastructure	9	Electric Outage (long-term)
5	Flood	10	Mass Casualty Incident

Table 2.0 – The Ten Most Likely Damaging Threats and Hazards (Erie County 2019 HVA)

15. The National Risk Index

- a. The National Risk Index is a tool that assists in the identification of specific natural hazard risk levels of communities in the United States.
- b. The National Risk level, utilizes the following risk calculation formula:
(Risk Index = Expected Annual Loss x Social Vulnerability ÷ Community Resilience)
- c. The National Risk Index is an open source data toolset that provide the opportunity to calculate the risk index for their specific communities, based on the following 18 pre-identified natural hazards (Table 3.0).

The National Risk Index Hazards

Hazard	Hazard	Hazard
Winter Weather	Ice Storm	Coastal Flooding
Lightning	Strong Wind	Wildfire
Cold Wave	Hail	Drought
Riverine Flooding	Heat Wave	Avalanche
Tornado	Hurricane	Tsunami
Landslide	Earthquake	Volcanic Activity

Table 3.0 – The 18 Natural Hazards of the National Risk Index

The National Risk Index Report for Erie County:
(Compared to the rest of the United States)

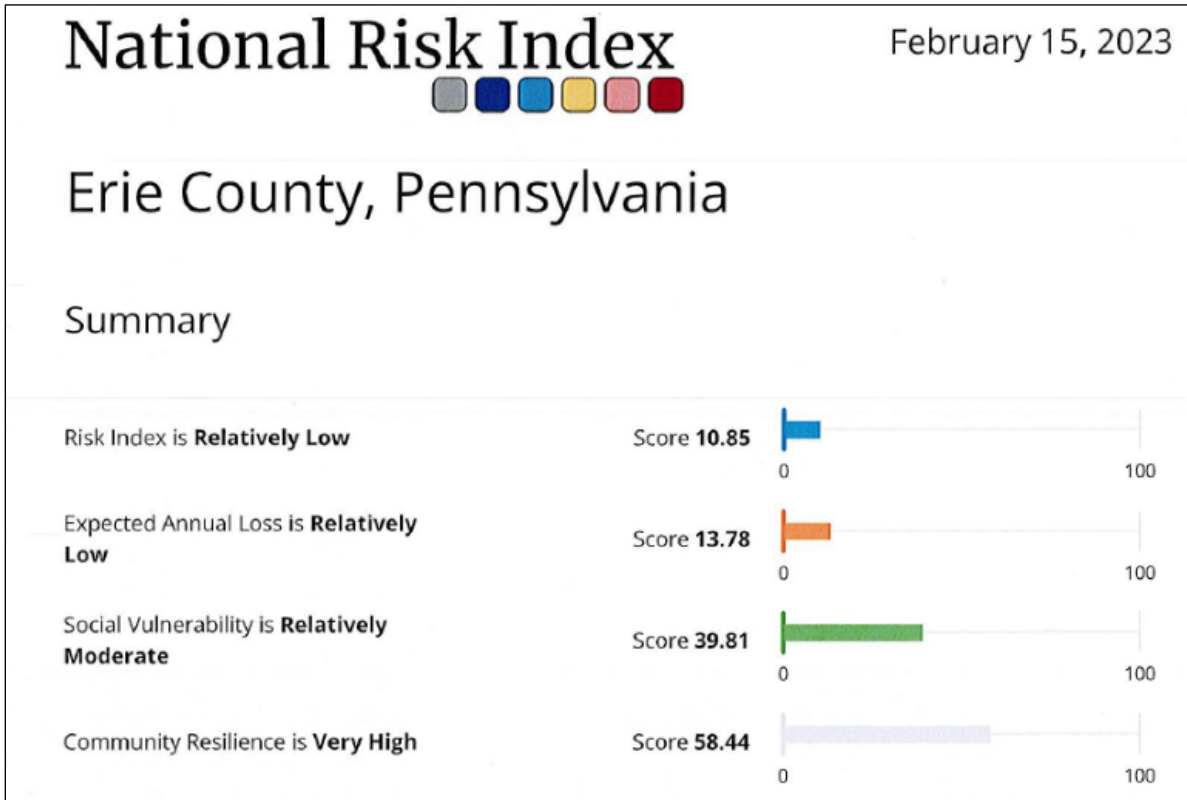


Figure 1.0 National Risk Index – Erie County (FEMA, 2023)

- d. The data and information collected from the National Risk Index for Erie County assists with planning efforts to reduce impacts and increase Erie County’s resilience to natural hazard impacts.
- e. Trends demonstrate that the climate is always changing. Therefore, natural hazard impacts remain a constant hazard to the Erie County Community. Hazard mitigation projects, identified in the Erie County Hazard Mitigation Plan, address mitigation efforts related to climate impacts. The implementation of these types of mitigation efforts assists in the reduction of expected annual loss from natural hazard impacts.
- f. Trends demonstrate that hazards also impact Erie County’s infrastructure, thus exacerbating infrastructure decay. Hazard mitigation projects, identified in Erie County’s Hazard Mitigation Plan, address mitigation efforts related to natural hazard infrastructure decay impacts. The implementation of these types of mitigation efforts assists in the reduction of expected annual loss from natural hazard impacts.

16. Social Vulnerability

- a. According to the CDC, “Social Vulnerability refers to the potential negative effects on communities caused by external stresses on human health”.
- b. In addition to FEMA’s National Risk Index determination, the CDC / ATSDR measures a Social Vulnerability Index (SVI), utilizing the U.S. Census Tract Data. The SVI identifies 16 census tracts, groups them into four themes, measures each theme, and calculates an overall social vulnerability index score. These combined scores determine a community’s social vulnerability.
- c. Determining the social vulnerability index assists in identifying community resiliency following disaster impacts. The data and information contained in the Social Vulnerability Index assists with the planning, the preparedness, and the readiness efforts of Erie County, ahead of disaster incidents.
- d. The four CDC / ATSDR social vulnerability index themes are socioeconomic status, household characteristics, housing type and transportation, and racial and ethnic minority status.
- e. The CDC / ATSDR SVI for Erie County in 2020, identifies the following:

Theme	Vulnerability Level
Socioeconomic Status	Medium - High
Household Characteristics	High
Housing Type & Transportation	High
Minority Status & Language	Medium - High
Overall	High

Table 4.0 – Erie County Social Vulnerability Index (CDC / ATSDR, 2020)

B: Assumptions

- 1. A major disaster, emergency or terrorism event may cause numerous injuries and fatalities, property loss, and disruption of normal life-support systems. These events will impact lives, property, environment, economy, and social infrastructures.
- 2. The extent of casualties and damage will depend on factors such as the time of occurrence, severity of impact, weather conditions, population density, building construction, and the possibility of cascading events such as fires, explosions, structural collapse, contamination issues, loss of critical infrastructure and flooding.

County of Erie Emergency Operations Plan

3. The high number of casualties, the extensive damage to structures and critical infrastructure, and the disruption of essential services will quickly overwhelm the capabilities of the local first responder agencies and municipal governments in their response to meet the needs of the situation.
4. Widespread damages may impact the availability of responders who may have been affected by the incident or immediately overwhelmed by request for service.
5. The loss of electrical power will cascade into losses of other critical infrastructure that negatively impact local response and recovery efforts.
6. In addition to technological advances and I.T. systems, emerging cyber threats and cyber-attacks may call for a community's response and recovery capabilities for success.
7. Erie County will coordinate and support the activities of multiple political subdivisions, in accordance with the provisions of the Pennsylvania Emergency Management Services Code. Erie County Emergency Management may need to respond on short notice to provide timely and effective assistance.
8. As part of the tiered-response system model, Erie County may request NWPARG resources and capabilities to provide additional coordination and support, in accordance with the Pennsylvania Counterterrorism Planning, Preparedness, and Response Act of 2002 and existing intergovernmental cooperation agreement(s).
9. Upon a determination that resource requests exceed or may exceed locally available resources, Erie County will request assistance from the NWPARG and / or PEMA.
10. The occurrence of a major disaster or emergency may result in the declaration of a disaster emergency by the Governor. Depending upon the severity of the event, the Governor may request an Emergency Declaration or a Major Disaster Declaration from The President of the United States.
11. Regardless of the extent of damages and federal disaster declaration status, Erie County needs the support, cooperation, and coordination of services between the public sector, the private sector, and the non-governmental organizations to facilitate emergency assistance to those affected by emergencies and disaster events.
12. Enacted in 2008, Act 93 makes mutual aid available to the county and all of its political subdivisions that have not opted out of the system. As such, response to emergencies and disasters requiring actions beyond the capability of the local municipality or the county, in which the incident occurs, have the ability to call upon surrounding jurisdictions for additional aid.

13. The limited emergency management capabilities of cities, townships, boroughs and regions may adversely affect the county's MACC operations. The adverse effects will likely include lack of communication, lack of coordination, and lack of information regarding damages and other situational awareness elements.
14. Even though The Governor of Pennsylvania mandates the use of NIMS, the actual implementation of ICS depends upon the actions of the first responder entities and their on-scene leadership. Additionally, it may take an extended amount of time for on-scene first response entities to fully implement ICS.
15. Those with social vulnerabilities and / or functional and access needs may have increased impacts from disaster events. All first responders and EOC / MACC personnel must remain cognizant of their needs.
16. The COVID-19 Pandemic demonstrated the limits of mutual aid regarding nationwide disaster events. Throughout the pandemic response, Personal Protective Equipment (PPE), equipment, and other supplies were in very high demand and short supply. Future disaster events may disrupt supply chains and / or negate the availability and use of the mutual aid system.

III. CONCEPT OF OPERATIONS

A: General:

1. Incident Detection

- a. Citizen detection and the subsequent action of calling 9-1-1 are the first components in a community's response to incidents.
- b. In Erie County, all 9-1-1 calls initially route to the Erie County Public Safety Answering Point (PSAP) and then the information branches out to the appropriate dispatch center.
- c. Initial first responder agency response to daily emergencies and disaster events, occurs via dispatch by the Erie County 9-1-1 PSAP, the Millcreek Township Communications Center for Millcreek Township Police Department jurisdiction calls for service, or the Pennsylvania State Police Barracks for Pennsylvania State Police jurisdiction calls for service.
- d. Dispatch and initial response of specialty resources (ie. air medical units, U.S. Coast Guard, etc.) occurs via their specific dispatch centers / command and control authorities. Response coordination between dispatch centers, command and control authorities, and on-scene incident resources occurs as part of the

County of Erie Emergency Operations Plan

National Incident Management System (NIMS), the Incident Command System (ICS), and / or pre-established protocols.

- e. All Erie County emergency response efforts will follow NIMS, specified by the U.S. Department of Homeland Security. Following NIMS includes:
 - 1. The designation of an Incident Commander / Unified Commander, and if necessary, an Incident Management structure
 - 2. The use of NIMS-specific resource definitions and typing
 - 3. NIMS nomenclature, communication methods, and planning processes

2. Political Subdivisions

- a. Incident Command and Unified Command is strictly the responsibility of the local jurisdiction.
- b. Local elected officials are responsible for the protection of the lives, the property, the environment, and the economy within their jurisdiction. They exercise ultimate control of emergency activities within their jurisdiction.
- c. To satisfy the requirements of the Emergency Management Services Code (35 Pa C.S., §7101-7707), each political subdivision must have an Emergency Operations Plan (EOP). The Pennsylvania Emergency Management Agency (PEMA) allows and encourages regionalization of local emergency management programs.
- d. Each city, township, and borough shall have a designated Emergency Management Coordinator (EMC) responsible for the preparedness, response, recovery, and mitigation efforts in their respective jurisdiction.
- e. Each appointed local Emergency Management Coordinator shall maintain the state-mandated certifications.
- f. The local EMCs remain employees / appointees / volunteers of their respective municipal governments and are under the direct supervision of their respective municipal elected officials or regional boards.
- g. The supervision and management of the city, township, and borough emergency management coordinators is the responsibility of said jurisdictions. Local fire, police, EMS, and public works shall coordinate with the city, township, or borough that is the Jurisdiction Having Authority (JHA). The city, township, and

County of Erie Emergency Operations Plan

borough emergency management coordinators shall coordinate with the Erie County Emergency Management Coordinator and / or Erie County MACC.

- h. Municipalities and local EMC are responsible for the development and updating of the municipal EOP, EOC checklist, Standard Operating Guidelines, notification and resource manual, hazards and vulnerability assessments, damage reporting and assessment, and coordination with local resources such as Police, Fire, EMS, public works, schools, etc.
- i. Municipalities will comply with the reporting and communications requirements and protocols contained within the county EOP; County EMA policies, standard operating guidelines, protocols, etc.
- j. Each city, township, and borough shall have and maintain an emergency operations center.
 - 1. The organizational structure for a municipal EOC shall minimally consist of an EOC Manager, Public Information Officer, Operations Section Chief, Planning Section Chief, Logistics Section and a Finance/Administration Section Chief.
 - 2. Each municipal EMC will annually update the Local Emergency Management Information Form to include the location of the respective jurisdiction's EOC for each city, township, and borough within Erie County.
 - 3. While not normally activated, the local jurisdiction's EOCs will activate as needed.
 - 4. If the impacts of the incident require additional resources, communications with the public, damage assessment, etc., the local or regional jurisdiction's EOC shall activate to provide coordination between on-scene incident response agencies and the local government(s).
 - 5. Fire, Police, EMS, and public works will coordinate through their respective municipal EOCs for resource needs beyond the resource requesting capabilities of the dispatch center(s). The Resource Section of this document provides additional information regarding the Resource Request Process.
 - 6. The municipal EOCs are for key decision-makers of a city, township, and borough to gather and share information, exercise direction and control of operations, and to coordinate activities of the jurisdiction's responders during emergencies.

3. Intergovernmental Assistance

- a. All incident response and recovery efforts, including severe emergencies and disaster events, are the responsibility of the local level. Response efforts will start with the local level but assistance, support, and coordination from higher levels of government and Non-Government Organizations may occur. This assistance, support, and coordination will depend upon the size, scope, and complexity of the incident, as well as the resources requested by the local jurisdiction. Regardless of additional resource assistance, support, and coordination, the local elected officials are in charge for their respective jurisdictions, and Erie County only serves as a supporting entity.
- b. Local jurisdictional first responder agencies, public works, and other organizations shall share situational awareness information with their respective local emergency management coordinator and emergency operations center. In turn, the local emergency management coordinators and emergency operations centers shall coordinate with the Erie County Emergency Management Coordinator and the Erie County MACC.
- c. If the incident increases beyond the capabilities of the local jurisdiction, or if the incident involves more than one municipality, Erie County Emergency Management will assist with coordination of external support organizations and higher levels of government. By design, information sharing occurs through horizontal and vertical coordination of entities (See Figure 2.0).

Horizontal and Vertical Coordination of Information:

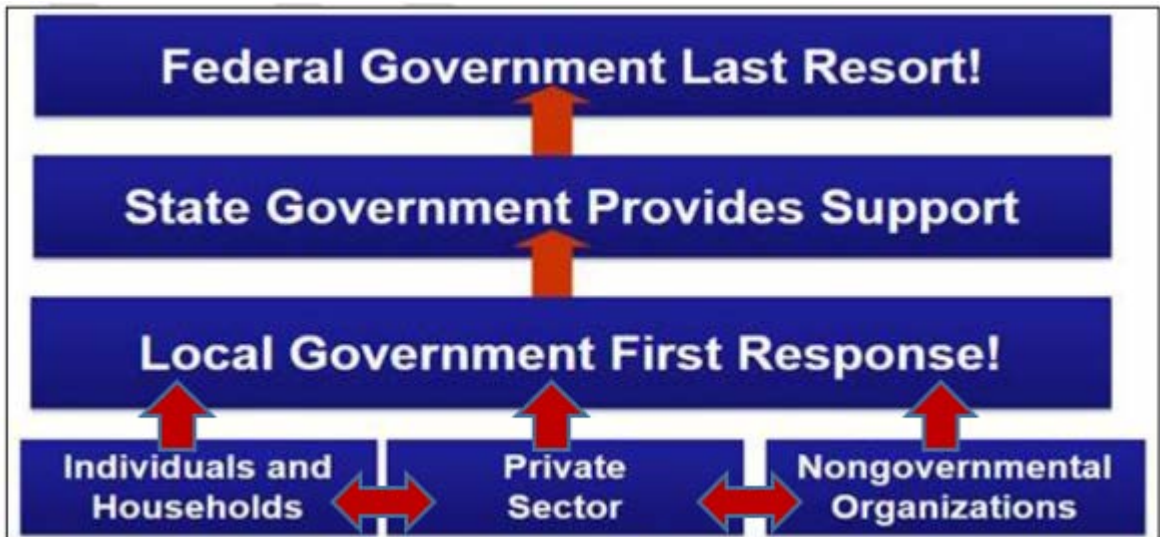


Figure 2.0 Horizontal and Vertical Coordination Flow

County of Erie Emergency Operations Plan

- d. If local resources become overwhelmed, the county will coordinate supplemental assistance, but the requesting jurisdiction is responsible for contracting and payment for any vendors, equipment, rentals, or supplies. The county will find the resources, but the municipality is responsible for purchasing and payment.
- e. If county resources are not adequate, the county EMA will turn to other counties, the NWP AERG, and / or the Commonwealth for assistance. Erie County will utilize the NWP AERG Inter-governmental cooperation agreement as well as the intrastate mutual aid (Act 93) to access outside assistance. Non-routine requests for out-of-county support occurs through an approval process by the Erie County Emergency Management Coordinator and / or the Erie County MACC. Adjacent Counties and other governments will render assistance in accordance with the provisions of mutual aid or intergovernmental support agreements in place at the time of the emergency or through the provisions of Act 93.
- f. For dispatching needs, the Northern Tier project intergovernmental cooperation agreement will be used to help ensure 9-1-1 calls are answered and to provide redundancy.
- g. The NWP AERG will provide materials and equipment as well as assistance in the form of specialized ICS Position Specific trained personnel as available.
- h. The county EMA and other agencies will establish regular communication with state agency offices supporting the county (Pennsylvania Departments of Agriculture and Transportation, State Police, etc.)
- i. Erie County will send unmet needs resource requests to the PEMA Western Area Office and to Pennsylvania's Commonwealth Resource Coordination Center (CRCC) for further action.

4. Powers of the Erie County Executive

- a. During emergency conditions, the Erie County Executive has authority to:
 - 1. Declare a state of emergency
 - 2. Proclaim and enforce curfews
 - 3. Shut down nonessential government operations
 - 4. In coordination with state authorities, issue emergency executive orders, proclamations, and regulations that have the full force and effect of law

County of Erie Emergency Operations Plan

- b. The Erie County Executive, or in his / her absence the Director of Administration, can declare a local disaster emergency upon finding a disaster occurred or is imminent. The declaration shall not be continued or renewed for a period in excess of seven days, except by or with the consent of Erie County Council. Any order or proclamation declaring, continuing, or terminating a local disaster emergency shall be given prompt and general publicity and filing with the Pennsylvania Emergency Management Agency (PEMA).
- c. Enact the County Continuity of Operations Plan(s) and / or procedures to ensure that county government continues to provide services to the citizens.

5. Emergency / Disaster Declarations

- a. Local Declarations:
 - 1. As written in part in Title 35, “A local disaster emergency may be declared by the governing body of a political subdivision upon finding a disaster has occurred or is imminent”. The mayor or chief executive officer may declare a local municipal disaster emergency, if authorized. The disaster declaration, at the county level in the County of Erie, occurs with the approvals of the Erie County Executive and the Erie County Council.
- b. Public Health Emergency Declarations:
 - 1. The Erie County Department of Health, as part of the Disease Prevention and Control Law, may enact county ordinances or issue county rules and regulations relating to disease prevention and control.
 - 2. The Pennsylvania Department of Health, as part of the Disease and Prevention Control Law, may enact state ordinances or issue state rules and regulations relating to disease prevention and control.
 - 3. As part of the Public Health Services Act, a federal declaration of a public health emergency may occur if a disease / disorder, a significant outbreak or infectious disease, a bioterrorist attack, or other condition occurs and it presents a public health emergency.
- c. Commonwealth of Pennsylvania Declarations:
 - 1. As written in part in Title 35, “A disaster emergency shall be declared by executive order or proclamation of the Governor upon finding that a disaster has occurred or that the occurrence or the threat of a disaster is imminent”.

County of Erie Emergency Operations Plan

- d. United States Small Business Administration Disaster Declarations:
 - 1. Small Business Administration (SBA) disaster declarations make federal economic injury recovery from disasters available based on specific parameters and with the approval of the SBA. A SBA disaster declaration may assist individuals and / or small businesses in the form of SBA economic injury disaster loans.

- e. United States Department of Agriculture Disaster Declarations:
 - 1. The Department of Agriculture (USDA) disaster declarations, authorized by the Secretary of the USDA, provides loans for agriculture producers suffering losses due to disasters. This type of disaster declaration must be requested by the Governor, the Governor's authorized representative, by an Indian Tribal Council leader, or by an FSA State Executive Director.

- f. Presidential Declarations:
 - 1. An Emergency Declaration (pre-disaster declaration) occurs when a potential disaster event is imminent. An Emergency Declaration provides for allocation of federal funding and federal resource deployment to occur, ahead of disaster impacts. Deploying and pre-staging resources has the potential to mitigate impacts of disaster events.
 - 2. A Major Disaster Declaration (post-disaster declaration) occurs following an event causing impacts that elevate to the level of a disaster event. A Major Disaster Declaration provides for the allocation of federal funding and federal resource deployment following impacts of disaster events. Federal funding sources and federal resource deployment may assist communities during the disaster response phase and the recovery phase of disaster events.

- g. Emergency Declaration and Disaster Declaration federal funding occurs through a cost-sharing process.

- h. The Robert T. Stafford Disaster Relief and Emergency Assistance Act states "All" requests for a declaration by the President that a major disaster exists shall be made by the Governor of the affected State" (The Robert T. Stafford Act §401(a), 1988).

B: Erie County Multi-Agency Coordination Center (MACC):

1. Incident Command / Municipal EOC / Erie County MACC Interface

Incident Command and EOC / MACC Coordination Flow

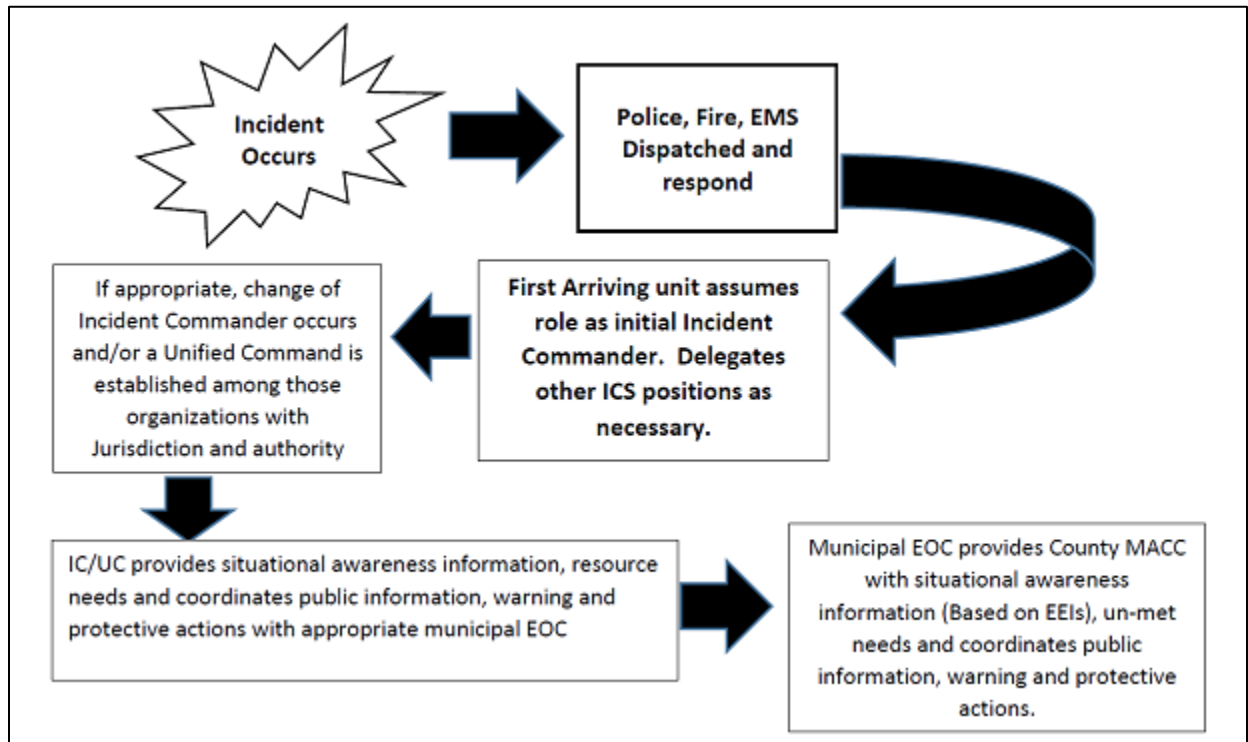


Figure 3.0 Basic Incident Command & EOC / MACC Coordination Flow

- a. The initial Incident Commander / Unified Command (IC / UC) at an incident site will be from the service having primary jurisdiction and authority (fire, police, emergency medical services, etc.). As an incident progresses and / or expands, the IC / UC may change. If it becomes unclear who has primary jurisdiction and authority, implementation of unified command should occur. Incidents that have multiple response organizations at the scene should also establish the unified command structure.
- b. The on-site IC / UC will coordinate with the respective municipal emergency management coordinator or municipal EOC.
- c. The municipal / regional EOC shall then coordinate with the County MACC, which will coordinate the support through the local EMC / EOC. If the local EMC / EOC is unavailable, the IC / UC will coordinate directly with the County MACC.

- d. The MACC Director will NOT assume command of those resources on-scene. The MACC will support the efforts of the on-site IC / UC and local EOC operations.
- e. City, township, and borough emergency management coordinators shall provide situation reports to the county MACC in a format and in intervals designated by the county MACC.
- f. The Erie County MACC Director will monitor local events through media outlets, internet sites, the county 9-1-1 / dispatch center, other dispatch centers, reports from PEMA, or from the National Weather Service (NWS), social media, and other sources. Based on impending events, the MACC Director will consider a partial or full activation of the MACC.

IV. ERIE COUNTY MACC ACTIVATION – RESPONSE AND RECOVERY

A. Erie County MACC Activation

1. Erie County MACC Legal Counsel Engagement

- a. The Erie County MACC Policy Group will seek out the advice of the Erie County Solicitor and supporting legal guidance throughout Erie County MACC Operations and incidents that may impact the Erie County Community.

2. Erie County MACC Operational Structure

Erie County MACC Organizational Chart

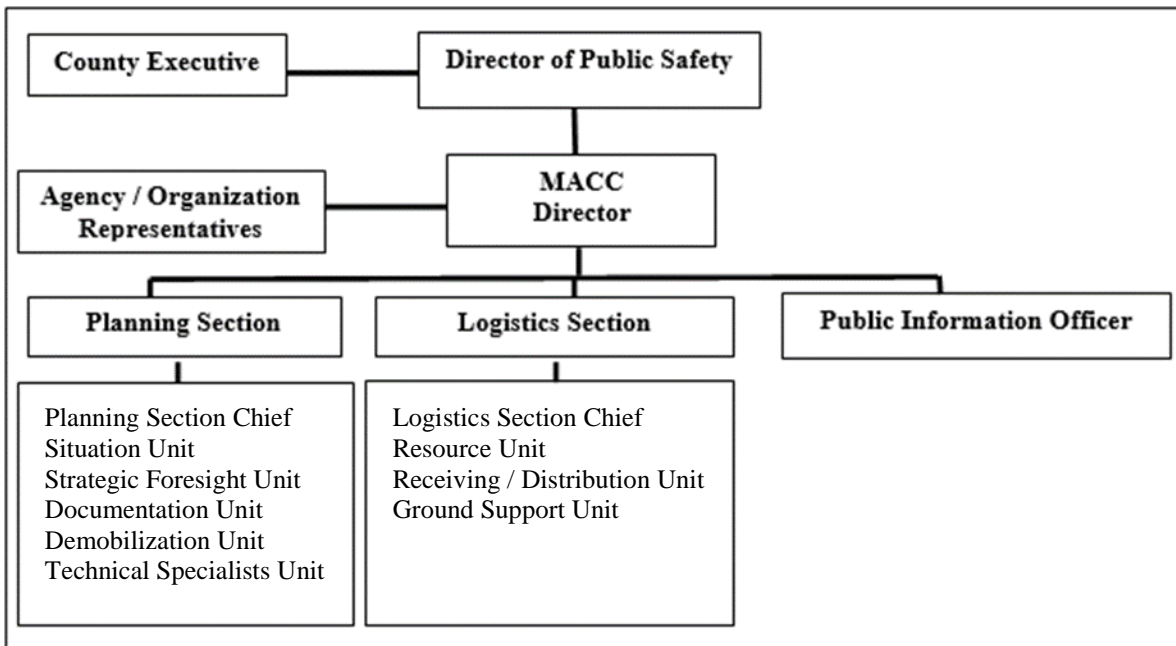


Figure 4.0 – Erie County Multi-Agency Coordination Center Organizational Chart

The Basic Plan is a Public Document // For Wide Dissemination

County of Erie Emergency Operations Plan

- a. The Erie County MACC utilizes an operational structure based on the management and organizational structure of the Incident Command System (ICS), defined in the National Incident Management System (NIMS). The National Response Framework (NRF) outlines the MACC operational structure, and it mirrors the Commonwealth’s structure.
- b. Authorization is in place for the following to activate the Erie County MACC:
 - 1. The Erie County Executive or their designee
 - 2. The Erie County Director of Administration or their designee
 - 3. The Erie County Department of Public Safety Director or their designee
 - 4. The Erie County Emergency Management Coordinator or their designee
- c. The Erie County MACC will consist of representatives from assisting and supporting organizations and agencies, county department heads and / or their designees, agency representatives from state departments and / or agencies, from local municipal / regional EOCs, and from non-governmental organizations, as needed.

3. Erie County MACC Operational Status

Erie County MACC Levels of Activation

LEVEL	OPERATIONS STATUS	INCIDENT SCOPE	SITUATION REPORTS
LEVEL I Full	Full Activation, due to catastrophic damage involving the entire county or neighboring counties.	The majority or all MACC staff and agency representatives activate.	One per Erie County MACC operational period
LEVEL II Enhanced	Enhanced Operations, due to threats that require situational awareness, planning, or possible county-level response	County EMA staff reports to the MACC, incident site, or municipal EOC, to coordinate and obtain situational awareness information.	TBD – Based on the situation
LEVEL III Normal	Normal Operations, routine, localized incidents, with relatively minor damages.	9-1-1 center monitoring the situation, Erie County EMA staff on-call.	As needed

Table 3.0 – Erie County MACC Levels of Activation

County of Erie Emergency Operations Plan

- a. As an equipped and functional facility, the Erie County MACC becomes operational to meet the needs of the MACC personnel supporting and coordinating the incident response and recovery efforts, during Erie County MACC activations.
- b. The Erie County MACC Director determines the Erie County MACC level of activation and activates the Erie County MACC, based on incident situational awareness and reported expansion or contraction of incident support needs, in accordance with NIMS and ICS.

4. Erie County MACC Mobilization

- a. The Erie County MACC Director initiates the Erie County MACC Activation Notification Process to mobilize the required Erie County MACC positions and agency representatives, based on incident support needs.
- b. The required Erie County MACC personnel and agency representatives report to the Erie County MACC facility upon activation and notification to begin supporting and coordinating the incident response and recovery efforts of severe emergencies and disaster events.
- c. The Erie County MACC becomes operational when MACC staffing is at an appropriate level, per the Erie County MACC Director.
- d. The Erie County MACC Director determines the Erie County MACC staff schedule, operational tempo, and operational period duration.

5. Erie County MACC Demobilization and Deactivation

- a. The Erie County MACC Director initiates the Erie County MACC demobilization of Erie County MACC resources, based on incident support needs.
- b. The Erie County MACC Director determines the level of Erie County MACC deactivation, based on incident support needs.

B. Erie County MACC Policy Group:

1. Erie County MACC Policy Group Overview

- a. During Erie County MACC Activations, the Erie County MACC Policy Group is the leadership of the Erie County MACC and collectively identifies, establishes, and implements the effort of the following:
- b. Erie County MACC supports the incident through achieving the leader's intent.
- c. Erie County MACC incident support priorities, to include:
 1. Life Safety
 2. Incident Stabilization
 3. Property Protection
 4. Environmental Preservation
 5. Economic Protection
- d. Erie County MACC incident support goals / lines of effort include, but are not limited to the following:
 1. Gather and Disseminate Information
 2. Public Information and Warning
 3. Shelter-In-Place
 4. Evacuation, Reception, Re-Entry, and Return
 5. Search
 6. Rescue
 7. Mass Shelter / Care
 8. Points-of-Distribution
 9. Determine Community Lifelines Status of CI / KR and Restoration
 10. Provide Logistical Support
 11. Emergency Repairs or Augmentation to Infrastructure
 12. Monitor for Improving or Worsening Conditions
 13. Damage Assessment
 14. Debris Management
 15. Fatality Management
 16. Hazardous Waste
 17. Healthcare Systems Support
 18. Medical Transportation
 19. Natural and Cultural Resource Protection and Restoration
 20. Private Sector Coordination
 21. Responder Security and Protection
 22. Temporary Power
 23. Temporary Housing
- e. Erie County MACC incident support objectives (based on the concept of Management by Objectives).

The Basic Plan is a Public Document // For Wide Dissemination

County of Erie Emergency Operations Plan

- f. The Erie County MACC Policy Group includes the following:
 1. Erie County Executive or their designee
 2. Erie County Director of Public Safety or their designee
 3. Erie County Department Directors or their designees (as designated by the Erie County Executive)
 4. Erie County MACC Director or their designee
-
- 2. Erie County Executive**
 - a. Issue Protective Action Recommendations (PAR), to include but not limited to, evacuation and / or shelter-in-place recommendations as needed (Pennsylvania Evacuation Planning & Implementation Guidebook).
 - b. If the situation warrants, issue declarations of disaster emergency.
 - c. Apply for state and / or federal post-disaster funds, as available.
 - d. Provide guidance and / or direction to the Erie County Director of Public Safety and the Erie County Emergency Management Coordinator, as necessary.
 - e. Establish outreach to elected officials at the local, county, state, and federal levels.
-
- 3. Erie County Director of Public Safety**
 - a. Respond to the Erie County MACC or field location, as deemed necessary or requested by the Erie County MACC Director.
 - b. Provide staff and other resources to the Erie County MACC or field location, as requested by the Erie County MACC Director.
 - c. Provide guidance and / or direction to the Erie County Emergency Management Coordinator and Erie County 9-1-1 Coordinator, as necessary.
 - d. Ensure the Erie County MACC Director / the Erie County Emergency Management Coordinator is executing the Erie County Executive's direction / policy.
 - e. Keep the Erie County Executive and the Erie County Director of Administration informed of progress, issues, and concerns.
 - f. Coordinate with the Erie County Executive and the Erie County PIO for press releases and press conferences.

4. Erie County Department Directors

- a. Respond to the Erie County MACC or field location as determined by the Erie County MACC Director.
- b. Provide guidance, direction, and authority to agency / department personnel who support the Erie County MACC Operation.
- c. Provide staff and other resources to the Erie County MACC or field to support incident response and recovery efforts, at the request of the Erie County MACC Director.

5. Erie County MACC Director

- a. Maintain emergency response checklists appropriate for the emergency needs and resources of the Erie County community.
- b. Activate and mobilize the Erie County MACC and act as or designate the MACC Director within the Erie County MACC during an activation.
- c. Determine and assign Erie County MACC staff scheduling, based on MACC incident support needs and MACC staff availability
- d. Determine and coordinate Erie County MACC operational tempo and operational period, based on MACC incident support needs.
- e. Make recommendations to the elected or appointed officials regarding protective action guidelines (PAR).
- f. Obtain approval from elected or appointed officials for all purchases of equipment, supplies, contracts, or additional resource requests.
- g. Obtain approval from elected or appointed officials for the deployment of resources outside Erie County.
- h. Provide periodic updates and briefings to the elected or appointed officials and other Erie County MACC personnel.
- i. Support municipalities and other organizations to compile cost figures for conducting emergency operations, above normal operating costs.
- j. Determine the need for conducting an initial damage assessment and ensure that PEMA receives a copy of the results.

The Basic Plan is a Public Document // For Wide Dissemination

- k. Prepare for SBA or Joint Preliminary Damage Assessment teams, if needed.

C. Erie County MACC Support - Agency Representation:

1. Erie County MACC Support – Agency Representation Overview

- a. During Erie County MACC Activations, Erie County MACC supporting agencies provide the following support, at the request of the Erie County MACC Director:
 1. Advise and provide subject matter expertise regarding community lifelines to the Erie County MACC Management Group.
 2. Ability to allocate additional support personnel and services, at the request of the Erie County MACC Director.
 3. Provide a direct coordination and communications link to additional similar support entities and services.

2. Agency / Organizational Representatives General Roles & Responsibilities

- a. Respond to the Erie County MACC or the field, at the request of the Erie County MACC Director.
- b. Each organization that is assisting and / or supporting the incident should have a representative with decision-making ability located at the Erie County MACC. *This does not replace an agency / organization's legal requirement to have and operate their Agency / organization's Department Operations Center (DOC).*
- c. Coordinate with other agency representatives in the Erie County MACC.
- d. Speak on behalf of their agency / organization and allocate their agency's resources, within established policy limits, while acting as a liaison between their agency / organization and the Erie County MACC.
- e. Obtaining situation status information and response activities to and from their agencies / organizations, for the Erie County MACC.
- f. Coordinate with parent organization for the delivery of services and support to those affected by the disaster and / or to the other organizations assisting or supporting response and recovery operations.
- g. May facilitate resource requests to or from their agencies, and coordinate approved resource requests through the Erie County MACC Logistics Section.

D. Erie County MACC Planning Section:

1. Erie County MACC Planning Section Overview

- a. During Erie County MACC Activations, the Erie County MACC Planning Section is responsible for numerous functions, to include but not limited to the following:
 1. The Erie County MACC's data collection, evaluation, and dissemination of information regarding incident-related materials.
 2. Information display of incident-related information to provide accurate situational awareness and a common operating picture.
 3. Develop and disseminate situation reports and incident support plans.
 4. Collect, organize, and archive all reports, forms, files, and checklists regarding the Erie County MACC Activation Operations.
 5. Incorporate incident support technical specialists into the Erie County MACC Planning Section to serve as subject matter experts.

2. Erie County MACC Planning Section Chief

- a. Serves as the coordinator of all activities categorized under the Planning Section and the compilation of an Incident Support Plan (ISP).
- b. Functions as the interface between the Planning Section and other sections as well as the MACC Management Group.
- c. Collects data for essential elements of information (EEIs) and community lifelines, verifies information and develops situation reports and / or common operating pictures.
- d. Ensures that all personnel operating within the Erie County MACC Planning Section receive up-to-date information regarding the current operational period and the incident.
- e. Solicit periodic update briefings from the individual staff of the Erie County Planning Section.
- f. Implement programs, processes, procedures to increase situational awareness among all Erie County MACC personnel.

County of Erie Emergency Operations Plan

- g. Incorporate GIS, to provide graphical representations of the extent of the emergency and to provide information regarding impacted community lifelines.
- h. Provide periodic updates and briefings to the Erie County MACC Policy Group, Incident Command, local EOCs, and others.
- i. Other duties and responsibilities identified in the Erie County MACC Planning Section Chief's checklists.

3. Erie County MACC Situation Unit

- a. Prepare and maintain the Erie County MACC displays.
- b. Collect all incident-related data, specifically EEI information and community lifelines, at the earliest possible opportunity, and continue these functions throughout Erie County MACC operations.
- c. Reports information within appropriate sections of WebEOC and the Erie County MACC displays throughout operational periods and / or at the request of the Erie County MACC personnel.
- d. Participates in incident support planning meetings at the request of the Erie County MACC Director.
- e. Provides situation status information in response to specific requests.
- f. Maintains and updates situation unit records.
- g. Use maps, photos, graphics, incident reports, CAD reports, and / or other data to prepare incident support maps and displays.
- h. Produce and update maps, overlays, and display boards within established guidelines (See MACC MAP Display SOG) using ICS symbols. Report inaccuracies to the Situation Unit Leader.
- i. Collect, verify, display, and update all incident-related information on the Community Lifelines Wall, for an accurate systems status, situational awareness, and a common operating picture.
- j. Other duties and responsibilities identified in the Erie County MACC Situation Unit's checklists.

4. Erie County MACC Strategic Foresight Unit

- a. Conduct strategic foresight analysis to formulate planning documents containing recommendations for future incident support and Erie County MACC operational periods, to include incident support thresholds, actionable trigger-points, and after-action planning activities.
- b. Develop and provide incident support alternate, contingency, and emergency plans to the Erie County MACC Planning Section Chief, to support and assist incident support entities with critical decision-making tools during dynamic and complex incidents.
- c. Participates in incident support planning meetings at the request of the Erie County MACC Director.
- d. Other duties and responsibilities as described in the Erie County MACC Strategic Foresight Unit's checklists.

5. Erie County MACC Documentation Unit

- a. Collect and organize all reports, files, forms, and checklists associated with the Erie County MACC incident-support operations, throughout Erie County MACC Activations.
- b. Establish and utilize filing and archival systems for all collected and organized reports, files, forms and checklists associated with the Erie County MACC incident-support operations, to include hard copy and electronic filing systems.
- c. Develop, maintain, and update a database of all filed and archived documents, including Right-to-Know Requests and After-Action Reports, for efficient recall of documents, at the request of the Erie County MACC Planning Section Chief, the Erie County MACC Director, or the Erie County MACC Policy Group.
- d. Participates in incident support planning meetings and After Action Report development, at the request of the Erie County MACC Director.
- e. Other duties and responsibilities as described in the Erie County MACC Documentation Unit's checklists.

6. Erie County MACC Demobilization Unit

- a. Support resource demobilization efforts, in conjunction with the timelines and processes identified in the Erie County MACC Incident Support Plan.
- b. Implement the use of the Erie County MACC demobilization forms and checklists, to ensure accountability of demobilizing resources, in conjunction with the timelines and processes identified in the Erie County MACC Incident Support Plan.
- c. Coordinate incident-support resource demobilization with the other sections of the Erie County MACC.
- d. Participates in incident support planning meetings at the request of the Erie County MACC Director.
- e. Other duties and responsibilities as described in the Erie County MACC Demobilization Unit's checklists.

7. Erie County MACC Technical Specialists Unit

- a. Provides incident-specific subject matter experts and / or technical consultation to the Erie County MACC personnel, at the request of the Erie County MACC Director and / or the Erie County MACC Management Group.
- b. Performs duties, assigned by the Erie County MACC personnel, in conjunction with timelines and processes identified by the Erie County MACC Incident Support Plan.
- c. Participates in incident support planning meetings at the request of the Erie County MACC Director.
- d. Other duties and responsibilities as described in the Erie County MACC Technical Specialists Unit's checklists.

E. Erie County MACC Logistics Section

1. Erie County MACC Logistics Section Overview

- a. During Erie County MACC Activations, the Erie County MACC Logistics Section performs numerous functions to include, but not limited to, the following:

County of Erie Emergency Operations Plan

1. Erie County MACC lead for incident support resource requests, resource procurements, resource tracking, and resource deployments.
2. Coordination lead for resource transportation, resource delivery, and resource maintenance.

2. Erie County MACC Logistics Section Chief

- a. Serves as the coordinator of all activities, units, and positions categorized under the Erie County MACC Logistics Section.
- b. Function as the interface between the Logistics Section and the Erie County MACC Director.
- c. Ensure that all personnel operating within the Logistics Section receive up-to-date information regarding the situation and the event.
- d. Solicit periodic update briefings from the individual staff of the Logistics Section functions.
- e. Provides periodic updates and briefings to the Erie County MACC Director and other Erie County MACC personnel.
- f. Obtain approval from the Erie County MACC Director for all deployment of resources.
- g. Obtain approval from the Erie County MACC Director to begin the resource procurement process, in conjunction with the Erie County Purchasing guidelines and the Erie County Purchasing Department.
- h. Other duties and responsibilities identified in the MACC Logistics Section Chief's checklists.

3. Erie County MACC Resource Unit

- a. Respond to the Erie County MACC or the field, at the request of the Erie County MACC Director.
- b. Maintain a listing of resources with contact information.
- c. Coordinate with municipal EOCs, the provision of materials, services and facilities in support of the incident.

County of Erie Emergency Operations Plan

- d. Coordinate the establishment of and operation of Points-of-Distribution to hand out emergency water and supplies.
- e. Advise the Erie County MACC staff about resource acquisition activities within Erie County.
- f. Manage Erie County Department of Public Safety's stock of supplies and equipment.
- g. Coordinate with the Erie County CERT Logistics Group.
- h. Establish and coordinate disaster recovery centers.
- i. Coordinate use of organic volunteers.
- j. Coordinate donations.
- k. Provides information to the Erie County MACC Planning Section.
- l. Ensure the approval of all orders by the Erie County MACC Director.
- m. Determine if a requested resource is available as a donation.
- n. Track and report the status of all ordered resources.
- o. Work with the Erie County MACC personnel to establish / project burn rates of supplies.
- p. Keep Receiving / Distribution Unit informed of all orders placed and expected delivery dates, times, and locations.

4. Erie County MACC Receiving / Distribution Unit

- a. Implement pre-plans and procedures for operation of supply area and file system.
- b. Maintain inventory of on-hand and received supplies and equipment. Maintain the ability to relay the status of accountable equipment upon request.
- c. Develop and implement security requirements for the supply area.
- d. Notify Resource Unit of received supplies and equipment, as well as any concerns.

5. Erie County MACC Ground Support Unit

- a. Respond to the Erie County MACC or the field, at the request of the Erie County MACC Director.
- b. Coordinate with assisting and supporting organizations for the transportation / delivery of resources / personnel in support of disaster response and recovery operations.
- c. Support incident logistics / operations by coordinating fuel maintenance incident support with providers and municipal EOCs.
- d. Develop a transportation plan, with the Erie County MACC Planning Section / Erie County GIS Department, identifying routes of ingress and egress, to facilitate the movement of response personnel, the affected population, and the shipment of resources and materials.
- e. Support municipal EOCs with coordination of transportation needs for public evacuations, PODs, etc.
- f. Notify the Erie County MACC Resource Unit of all status changes regarding support and transportation vehicles.
- g. Collect use information on rented equipment.
- h. Requisition maintenance and repair supplies.

F. Erie County MACC Public Information System

1. Public Information System Overview

- a. During Erie County MACC Activations, the Erie County MACC Public Information Section performs numerous functions to include, but not limited to, the following:
 1. Coordinates with the Erie County MACC Management Group to develop and distribute emergency public information.
 2. Coordinates with the media to schedule press briefings, news conferences, and additional interview requests, in collaboration with the Erie County MACC Management Group and other entities.
 3. Leads the Joint Information Center activities, at the request of the Erie County MACC Coordinator.

2. Erie County MACC Public Information Officer

- a. Respond to the Erie County MACC, the field, or the Joint Information Center, at the request of the Erie County MACC Director.
- b. Develop and release emergency public information before, during, and after an emergency, once approved by EMC and elected or appointed officials.
- c. Advise elected or appointed officials and the MACC Manager/EMC about Public Information activities.
- d. Coordinate and lead the Erie County MACC Public Information Section activities and personnel.
- e. Stand-up and coordinate the Erie County Joint Information Center, as needed.
- f. Coordinate news media briefing schedules, press conferences, and additional media requests.

3. Erie County MACC Joint Information Center

- a. Advise elected or appointed officials and the Erie County MACC Director / the Erie County Emergency Management Coordinator regarding public information activities.
- b. Coordinate emergency public information with agency representatives and others operating in the JIC.
- c. Develop and release emergency public information before, during, and after an emergency, once approved by EMC and elected or appointed officials.

V. SITUATIONAL AWARENESS / COMMON OPERATING PICTURE

A. Web-Based Incident Management Tools:

1. Data Collection and Information Sharing Overview

- a. Erie County Emergency Management and the Erie County 9-1-1 Dispatch Center utilize steady-state monitoring to maintain situational awareness and a common operating picture of emergency incidents and the possibility of escalating emergency incidents.

County of Erie Emergency Operations Plan

- b. In addition to maintaining situational awareness and a common operating picture via local news media, social media, and the public's use of calling 9-1-1, Erie County Emergency Management and the Erie County 9-1-1 Dispatch Center utilize the following web-based incident management data collection and information sharing tools:

2. Computer-Aided Dispatch (CAD)

- a. Erie County 9-1-1 Dispatch Center's data and information sharing computer-aided dispatch system that provides real-time data entry, systematic organization of information, and information sharing regarding local 9-1-1 call specifics for first responders, a consortium of dispatch centers, and emergency management agencies.
- b. CAD provides 9-1-1 call takers and dispatchers with the ability to input call type, to continually input incident updates, and to push information to responding and on-scene first responder units.
- c. Cadview provides 9-1-1 dispatchers and emergency management with the capability of tracking in-service and out-of-service first responder units, assigned 9-1-1 call status of first responder units, and the overall status of the 9-1-1 system on a county-wide and regional level.

3. WebEOC

- a. The WebEOC platform provides an electronic information sharing and notification system for dissemination of incident information to local, county, state, and federal emergency management and partner entities.
- b. PEMA's Emergency Management Directive 2003-2 provides the criteria for reporting incidents through this system.
- c. Reported incidents, via the Pennsylvania Emergency Incident Reporting System (PEIRS), provide situational awareness and a common operating picture for specific types of incidents.
- d. In addition to emergencies and escalating incidents, WebEOC provides situational awareness and a common operating picture for large planned events and special events entered into the system.

4. Electric Outage Reporting Systems

- a. The two electric service providers, supplying the Erie County community, provide electric outage web-based reporting systems and maps that assist in gaining situational awareness and a common operating picture, regarding outages and Estimated Time of Restorations (ETRs).
- b. These systems update at regular intervals to depict current number of customers without electric service, current number of customers per geographic area without electric service, and a map of current electric outages.
- c. These systems provide a method for the public to report outages and lighting problems, as well as provide a source for emergency management personnel to obtain current incident-related electric service information.

5. HHS emPOWER Map

- a. This web-based mapping tool provides community-level information regarding the number of number of electricity-dependent Medicare beneficiaries in a community.
- b. This map updates on a monthly basis and provides emergency management personnel with information about a specific subset of the community's vulnerable population, according to zip code.
- c. Erie County's emergency management personnel utilize this information to assist Erie County throughout all phases of emergency management.

6. ArcGIS Survey123

- a. This system provides a web-based and mobile application-based program for the public to report incident-related property damages to emergency management entities in the formats of pictures and text information.
- b. With damage information collected, this system provides emergency management entities with the capability of sorting, organizing, and analyzing the extent of damages in an efficient and standardized format.
- c. ArcGIS Survey123 provides emergency management personnel with a system to conduct damage assessments and report findings, through engagement with the public.

7. 5-1-1 PA

- a. This web-based and mobile application-based system provides real-time road and travel conditions for the public and emergency management entities, during incidents impacting travel services.
- b. Emergency management personnel utilize this situational awareness information during and following incidents to identify ingress and egress access points, routing concerns, and to monitor travel-related incident impact updates.

8. PA 2-1-1

- a. Available by dialing 211, in Pennsylvania, or through their website at www.211.org, 211 provides assistance with connecting to many social services and programs that include, but are not limited to the following, housing, utility, food, employment and expenses, and health resources.
- b. As a community resource, emergency management personnel enlist the assistance of 211 to connect those with unmet needs to services and programs following disasters. Additionally, emergency management personnel message out and empower the community to contact 211 to learn about and seek out the assistance of 211.

B. Information Mapping, Display, and Dissemination:

1. Erie County MACC Mapping and GIS Overview

- a. Mapping collected incident-impact data and information provides context and additional situational awareness and a common operating picture for emergency management personnel and partner entities.
- b. Erie County Emergency Management, with the support and assistance of GIS, build out maps and map layers to depict base-level infrastructure and other key resources within Erie County.
- c. Erie County Emergency Management utilizes these maps during steady-state operations and MACC Activations to maintain and enhance situational awareness and a common operating picture.

2. Homeland Security Infrastructure Foundation-Level Data (HIFLD)

- a. This open-source web-based platform provides data and information regarding critical infrastructure and key resources (CI/KR) at a community level basis.
- b. Erie County Emergency Management utilizes data from this platform to map existing CI/KR, throughout Erie County, ahead of disaster incidents.
- c. During Erie County MACC Activations, the mapped CI/KR information provides additional situational awareness of potential disaster impacts.

3. FEMA's Resilience Analysis and Planning Tool (RAPT)

- a. This open-source planning tool provides pre-identified map layers to assist with situational awareness of infrastructure data, resilience indicators, and weather data.
- b. Erie County Emergency Management utilizes the available map layers as a steady-state situational awareness tool, ahead of disaster incidents.
- c. During Erie County MACC Activations, these map layers assist Erie County MACC personnel with identifying areas and population at risk for increased disaster impacts.

4. CONNECT Explorer

- a. This map program provides Erie County Emergency Management and GIS with the capability of building specific map layers and additional mapping tools, based on CI/KR, waterways, flood plains, roadways, and other specific data points.
- b. Erie County Emergency Management and GIS utilize this information to obtain situational awareness and a common operating picture of existing infrastructure and potential impact areas, during the preparedness phase.
- c. During Erie County MACC Activations, this information assists Erie County MACC personnel with mapping areas of concern and infrastructure points of concern.

5. The National Weather Service (NWS)

- a. The National Weather Service (NWS) – Cleveland Office provides the weather forecasts for Erie County Pennsylvania. Erie County Emergency Management works closely with the NWS – Cleveland Office ahead of and during predicted severe weather events.
- b. A few of the NWS specialty centers that provide support to emergency management personnel include, but are not limited to the following:
 1. The Weather Prediction Center (WPC)
 - This center provides weather forecasts, daily weather maps, flood outlooks, winter weather forecasts, and weather analyses.
 2. The Storm Prediction Center (SPC)
 - This center provides forecast products that include current weather, convective outlooks, fire weather outlooks, and watches and warning displays.
 3. The National Hurricane Center (NHC)
 - This center provides tropical weather outlooks, identifies active storms, provides marine forecasts, and provides educational materials. Additionally, this center has a storm surge unit, which prepares storm surge atlases for use by emergency management personnel, as well as post-storm analyses.

6. Erie County MACC Displays Overview

- a. The Erie County MACC utilizes multiple types of displays to map, provide context, and display situational awareness and a common operating picture of disaster-related impacts throughout Erie County.

7. Maps / Forms / White Boards

- a. Maps and mapping of disaster-related impacts are helpful to size-up the current situation, determine resource allocation and resource routing, identify potential additional and escalating areas of concern, and help to plan for future operational periods.
- b. ICS Form wall laminates provide Erie County MACC personnel with the capability of applying the NIMS methodology to the various aspects of MACC operations and incident support and coordination.

- c. The Erie County MACC utilizes numerous white boards to display incident-related information and provides internal situational awareness of Erie County MACC operations and incident support operations and coordination.

8. Community Lifelines

- a. The Erie County MACC utilizes the Community Lifelines Status process, developed by FEMA, to obtain, maintain, and update situational awareness and a common operating picture of critical infrastructure, key resources, systems, networks, and system interdependencies throughout Erie County during MACC Level I, MACC Level II, and MACC Level III operations.
- b. The Community Lifelines Status process provides structure, prioritization, root cause analysis, and ease of communication regarding disaster-related impacts.
- c. The Community Lifelines Status Process drives the Erie County MACC's incident support response and recovery.
- d. The Community Lifelines Sectors and components consist of the following:
 1. **Hazardous Materials Sector**
 - Facilities
 - Hazmat, Pollutants, and Contaminants
 2. **Transportation Sector**
 - Highway / Roadway
 - Mass Transit
 - Railway
 - Aviation
 - Maritime
 3. **Communications Sector**
 - Infrastructure
 - Alerts, Warnings, and Messages
 - 9-1-1 and Dispatch
 - Responder Communications
 - Finance
 4. **Safety and Security Sector**
 - Law Enforcement / Security
 - Fire Services
 - Search and Rescue
 - Government Services
 - Community Safety

- 5. **Health and Medical Sector**
 - Medical Care
 - Patient Movement
 - Public Health
 - Fatality Management
 - Medical Supply Chain

- 6. **Energy (Power & Fuel) Sector**
 - Power (Grid)
 - Fuel

- 7. **Food, Water, and Shelter Sector**
 - Food
 - Water
 - Shelter
 - Agriculture

The Erie County MACC Community Lifelines Board:

Picture 1.0 – Erie County MACC Community Lifelines Status Board

- e. Determination of the Community Lifelines Status occurs via the following steps:
 1. Communicate with owners and operators, regarding the system.
 2. Data collection and information analysis of incident-related impacts.
 3. Plot the incident impacts in the corresponding sector and component areas.

County of Erie Emergency Operations Plan

4. Identify how the incident-impacts affect each of the components and subcomponents ability to remain functional:
 - Component Assessment:
 - Determine Status
 - Operational
 - Partially Operational
 - Not Operational
 - Identify Impacts
 - Determine Actions Needed
 - Identify Limiting Factors / Constraints
 5. Identify how the component's impacts affect the sector's ability to remain functional.
- f. Determine the sector's condition designation and assign one of the following status colors to each sector (based on the status of the most severely impacted component of the associated sector):
- | | | |
|---------------|---|---|
| GREY | = | Unknown Status (Additional Information Needed) |
| RED | = | Not Operational |
| YELLOW | = | Plan Implemented to Restore to Operational Status |
| GREEN | = | Operational |
- g. Assign an estimated timeframe to restore the lifelines to operational status / Estimated Time to Green (ETG), based on data collection, information analysis, and technical specialist advising.
- h. Once the lifelines status determination occurs, then the assessment of the Lines of Effort to stabilize / restore the lifelines sectors takes place.
- i. The determination of the Lines of Effort directly correspond to determining the Erie County MACC's Incident Support Goals and Objectives.
- j. The Community Lifelines status determination assists with understanding the correlation between incident-related impacts to critical systems and the functional interdependencies of the systems and networks.
- k. The status of the community lifelines is dynamic and provides real-time assessment of incident impacts.

- l. The Erie County MACC Community Lifelines Status Board provides situational awareness and a common operating picture to senior officials, Erie County MACC personnel, and others at the request of the Erie County MACC Director.

9. Erie County MACC Information Dissemination Overview

- a. Information dissemination occurs ahead of, during, and after disaster-related incidents to the public, to partner entities, and other local, county, regional, state, and federal organizations.
- b. The information dissemination process during MACC Level III (Steady-State) operations occurs via phone, text, email, news releases, social media, and face-to-face meeting opportunities.
- c. The information dissemination process during MACC Level II (Partial Activation) or MACC Level I (Full-Activation) operations includes all of the above-mentioned methods and includes Erie County MACC Briefings and Erie County MACC Situation Reports.

10. Erie County MACC Briefings

- a. Erie County MACC Briefings provide information for internal Erie County MACC personnel, for external partner entities at the local, county, state, or federal levels, or for the public (in the format of press conferences, as applicable).
- b. Erie County MACC Briefings for internal Erie County MACC personnel, occur throughout each operational period to update each MACC section and identify incident support and coordination progress.
- c. Erie County MACC Briefings for external partners, occur on briefing schedules determined by the incident support and coordination operational tempo.

11. Erie County MACC Situation Reports

- a. Generating Erie County MACC Situation Reports typically occurs during Erie County MACC Level I (Full Activation) and Erie County MACC Level II (Partial Activation) operations. However, generating an Erie County MACC Situation Report may occur during Erie County MACC Level III (Steady-State) operations, as needed and at the request of the Erie County MACC Director.

County of Erie Emergency Operations Plan

- b. Erie County MACC Situation Reports provide recipients with current MACC operational period-specific information related and assists with forming a common operating picture.
- c. The MACC Planning Section drafts situation reports, the MACC Director approves the situation reports for dissemination, then the MACC Planning Section disseminates the situation reports to the pre-determined approved recipient distribution list.
- d. The accuracy of the Erie County MACC Situation Reports depends upon the accuracy of the information received.

12. Erie County MACC Incident Support Plans

- a. Generating Erie County MACC Incident Support Plans occurs during Erie County MACC Level II (Partial Activation) and Erie County MACC Level I (Full Activation) operations.
- b. Erie County MACC Incident Support Plans provide pre-identified recipients with need-to-know information regarding the next Erie County MACC Operational Period.
- c. The Erie County MACC Incident Support Plans are For Official Use Only (FOUO) and are not for public dissemination, due to the sensitive information contained in them.

VI. MULTI-TIERED COORDINATION OF UNMET NEEDS

The organization making the initial request is responsible for all costs incurred

A: Public Sector Coordination:

1. Municipalities within Erie County

- a. Erie County 9-1-1 / Dispatch will dispatch police, fire, rescue, EMS resources, and mutual aid first responder entities.
- b. The respective municipal / regional EOCs shall accept and process requests for resources not listed in the Erie County CAD system (or the CAD system of the appropriate dispatch center).

County of Erie Emergency Operations Plan

- c. Police, fire, rescue, EMS, and public works organizations shall coordinate their unmet needs with their respective municipal / regional EOC.
- d. During a large scale incident (haz-mat, weather event, etc.) when all of a particular type / kind of a resource have been exhausted within the county, the ordering and assignment of additional resources will be handed off to the Erie County MACC.

2. Erie County

- a. When local municipal resources are committed, Erie County Emergency Management Agency (EMA) / Erie County MACC will coordinate assistance to satisfy unmet needs. The Erie County MACC will locate the resource and provide the information back to the original requestor.
- b. If Erie County requires additional assistance, it will call upon mutual aid from the NW PA Emergency Response Group, or from the Pennsylvania Emergency Management Agency (PEMA).

3. Northwest Pennsylvania Region

- a. Regional assets and incident support resources may be available through the NWPA Emergency Response Group (NWPAERG). This collaborative regional group includes first responder assets, emergency management assets, specialized team assets, and healthcare assets available from the City of Erie, Erie County, Crawford County, Warren County, and Forest County. The NWPAERG collaborates with local, county, state, and federal entities, to support the phases of emergency management throughout the northwest region of Pennsylvania.
- b. The Northern Tier Healthcare Coalition (NTHCC): Comprised of member facilities spanning across the 11 Northern Tier Counties in Pennsylvania. The types of member facilities include the following: Acute-Care facilities, Long-Term Care and Assisted Living facilities, Home Health and Hospice organizations, Dialysis centers, and EMS entities. The Northern Tier Healthcare Coalition, led by a regional manager, provides healthcare-related incident support and coordination, in collaboration with local, county, regional, state, and federal partners.
- c. EMMCO West Inc. (Northwestern PA Regional EMS Council): provides the oversight of emergency medical service activities for seven counties in Northwest Pennsylvania, including Erie County. In addition to the Board of Directors, subcommittees include the Regional Medical Advisory, Communications, Quality Improvement, and Transportation subcommittees.

4. The Commonwealth of Pennsylvania

- a. State assets and incident support may be available through PEMA and other state agencies.
- b. When resources are not available at the county / regional level, PEMA accepts and processes resource requests for unmet needs.
- c. When resources are not available at the state level, PEMA works with other states to locate and obtain resources through the Emergency Management Assistance Compact (EMAC). PEMA and other state-level partners regarding resource requests for unmet needs.

5. Federal Government

- a. PEMA coordinates with FEMA and other federal-level partners regarding resource requests for unmet needs.
- b. Federal assets and incident support resources may be available through the Federal Emergency Management Agency (FEMA) and other federal agencies.

B: Private Sector Coordination:

1. The Erie County MACC may coordinate with private sector organizations for goods and services regarding unmet needs, during disaster events.
2. The Erie County MACC may coordinate with hospitals, long-term care facilities, and EMS agencies for services regarding unmet needs, during disaster events. The Erie County MACC personnel may communicate and coordinate directly or indirectly via the Erie County Department of Health, serving as the ESF-8 Lead, during Erie County MACC activations. Additionally, the Erie County MACC may request that the NTHCC Regional Manager convene the Regional Medical Operations Coordination Cell via virtual meetings, to efficiently communicate and coordinate with the area's medical entities.
3. The Pennsylvania Business Emergency Operations Center (PABEOC), a state-facilitated integration program, may activate to assist with planning coordination between the private sector and the public sector ahead of, during, and / or following disasters.

C: Public Non-Profit Coordination:

1. The Erie County MACC may coordinate with public non-profit organizations and voluntary organizations active in disasters (VOADs), including but not limited to the American Red Cross, The Salvation Army, and Team Rubicon, for services regarding unmet needs during disasters.

D: Resource Requests:

1. On-scene first responder entities and municipal public works departments that have requests for unmet needs will attempt to fill the unmet need by contacting the local municipality having jurisdiction.
2. When a municipal / regional EMC has a request for unmet needs at the local municipal level, the municipal / regional EMC will complete a written Unmet Needs Resource Request Form (PEMA Resource Request Form) and will forward the completed form to the Erie County MACC Logistics Section for processing.
3. The Erie County MACC Logistics Section receives the completed Resource Request Form via direct hand-off, fax, or email.
4. The Erie County MACC Logistics Section reviews the completed Resource Request form, ensuring completeness and that an authorized requestor name and signature appears on the form.
5. The Erie County MACC prioritizes Life Safety Resource Requests.
6. The Erie County MACC Logistics Section attempts to fill the resource request order at the county / regional level, once approved by the Erie County MACC Director.
7. If the resource request order is fillable at the county / regional level, the Erie County MACC Logistics Section will locate the resource and notify the initial requestor. The initial requestor is responsible for the follow-up communication, contracting, and delivery of the resource.
8. If the resource request order is not fillable at the county / regional level, the Erie County MACC Logistics Section sends the completed Resource Request Form to PEMA for further processing, via fax or email.
9. If the resource request order is fillable, through PEMA, PEMA could contact the original requestor, the local municipality, or the Erie County MACC.

10. If the resource request order is not fillable at the state level, the Erie County MACC Logistics Section will communicate with PEMA and the initial requestor regarding further action steps.

E: Procurement of Resources:

1. If the resource request is fillable locally, the Erie County MACC Logistics Section will coordinate communication between the entity supplying the resource and the municipality or municipal / regional EMC.
2. If the resource request (requested by a municipality or municipal / regional EMC) is fillable at the county level, the Erie County MACC Logistics Section will coordinate communication with the municipality or municipal / regional EMC.
3. If a resource request (requested by an internal Erie County Government department) is fillable at the county level, the Erie County MACC Logistics Section will coordinate with the Erie County Purchasing department, and will follow the Erie County purchasing policy.
4. If the resource request is fillable at the state level, the Erie County MACC Logistics Section will coordinate communication between PEMA and the municipality or municipal / regional EMC.

F: Logistics Staging Areas / Commodity PODs / Medical PODs:

1. The Erie County MACC, in collaboration and coordination with the NWPAERG, may establish pre-designated Logistics Staging Areas to support incident response and recovery efforts. Logistics Staging Areas provide for a central location for incident support resources to check-in, receive information, and ready their resource, while awaiting further direction from on-scene leadership, the Logistics Staging Area Staff, and the Erie County MACC.
2. The Erie County MACC, based on operational constraints, may support the Erie County municipalities in establishing Commodity PODs to facilitate and coordinate the distribution of commodities to incident-impacted areas. Municipalities should use the POD planning template to pre-plan one POD per municipality. A Commodity POD provides for a central distribution point to pick-up and receive commodities, to include but not limited to, potable water and food.
3. The Erie County MACC, in collaboration and coordination with public health partners, may support the establishment of Medical PODs to facilitate and coordinate the dispensing of medication for those impacted by a disaster-related incident. A Medical

POD provides for a central dispensing point for to receive medication, to include but not limited to, vaccines and antiviral medications.

G: Communications:

1. The Erie County MACC maintains and utilizes the Notification and Resource Manual (NARM) as a communications tool.
2. Erie County MACC personnel communicate with local, county, state, and federal partners via radio, phone, VOIP, fax, email, and internet (WebEOC), etc. ahead of, during, and following disasters.
3. Erie County MACC personnel utilize landline phones, cellular phones, media broadcasts, written press releases, internet websites, and social media messaging to send and receive emergency information with the public ahead of, during, and following disaster-related events.

H: Administration / Reports:

1. Municipalities and Erie County Government will utilize pre-established bookkeeping and accounting methods to track and maintain records of expenditures and obligations.
2. The Erie County MACC will request reports from other agencies, relief organizations, and nongovernmental organizations when appropriate.
3. Municipal and Erie County emergency management agencies will keep narrative and written log-type records of incident response actions. The logs and records will form the basis for status reports to PEMA.
4. The Erie County MACC will forward reports and requests for assistance (if not filled locally) to the PEMA Western Area Office.
5. The Erie County MACC will provide reports to PEMA by the most practical means, generally within one hour. Reports will be in accordance with PEMA requirements.

VII. TRAINING, EXERCISES, AND AFTER-ACTION REPORTS

A. Training

1. The Erie County EMC is responsible for the overall preparedness / readiness of the Erie County MACC and the Erie County MACC's designated personnel. The Erie County EMC should conduct or administer trainings and should activate this plan to evaluate and maintain the readiness posture of the Erie County MACC's resources, as needed.
2. Elected and appointed officials and all emergency management and response personnel will be trained to meet the minimum requirements specified in applicable legislation (Title 35, Pa C.S.), federal NIMS requirements and PEMA training and exercise directives.
3. Erie County EMA staff officers are responsible for functional annexes and ensuring that personnel who implement the respective annexes are competent.
4. Erie County Emergency Management will conduct quarterly trainings for local coordinators and county staff to provide program updates and coordinate countywide response and emergency management.
5. Erie County Emergency Management will keep records and ensure training for the staff is available through on-line sources, community colleges, or scheduled training sessions in the area.
6. Erie County Emergency Management staff will participate in state and federal training programs, as prescribed internally and by PEMA.

B. Exercises

1. Exercises are a training vehicle for public officials, county emergency staff, and emergency services personnel, assigned with emergency responsibilities in this plan.
2. Exercises will follow the Homeland Security Exercise & Evaluation Program (HSEEP).
3. The Erie County EMC will activate this plan, at least annually, in the form of a drill.
4. An all-hazards functional exercise involving the entire Erie County MACC staff will occur every two years.
5. The Erie County EMC and EMA staff will participate annually in a PEMA-directed weather exercise, minimally designated as a Tabletop Exercise.

6. Erie County will prepare a three-year Training and Exercise Plan, known as the Integrated Preparedness Plan (IPP) and will submit it to PEMA's Western Area Office.

C. After-Action Reports

1. The development of an After-Action Report (AAR) and a Corrective Action Plan (CAP) will follow every Erie County MACC Activation and Erie County MACC Exercise.
2. The After-Action Report will incorporate comments from all exercise participants.

VIII. CONTINUITY OF OPERATIONS

- A. There is an alternate MACC facility with the basic minimum capabilities of the Erie County MACC.
- B. Each county elected official and department/ agency is responsible for identifying, selecting and protecting vital records, hard copy and electronic versions, that are essential for continued public well-being.
- C. The Municipal Line of Succession appears in the Local Municipal EOP or COOP plan.

IX. EOP ANNEXES

- A. Erie County EOP Annexes contain functional annexes for the following Erie County MACC Sections:
 1. The Erie County MACC Policy Group
 2. The Erie County MACC Planning Section
 3. The Erie County MACC Logistics Section
 4. The Erie County MACC Public Information System
- B. These functional annexes describe the structure of each Erie County MACC Section, contain position-specific responsibilities, and denote position-specific checklists and job aids for each section.

X. EOP-RELATED SUPPORT PLANS

A. Additional plans may be applicable and may provide details to supplement the Erie County Emergency Operations Plan, to include but not limited to the following:

1. Hazardous Materials / SARA Plans
2. Emergency Action Plans for Hazard Potential Category 1 and 2 Dams
3. Continuity of Government Plan / Continuity of Operations Plan
4. Hazard Mitigation Plan
5. Erie County Rail Safety Plan
6. Special Events Plans
7. Prison Plans
8. School Plans
9. Strategic National Stockpile Plan
10. Pandemic Influenza Plan
11. Regional Task Force Plan
12. Volunteer Management Plan (to be developed)
13. Donations Management Plan (to be developed)
14. Animal Care and Control Plan (to be developed)
15. Mass Casualty Plan
16. Mass Distribution Commodities Plan
17. Erie County Department of Health's All-Hazards Plan
18. Department-Specific Operations Plans (as available)

B. An incident involving hazardous substances, weapons of mass destruction or a dam failure may involve response prescribed by incident specific plans including NWP AERG Plan, SARA Plans, High Hazard Dam Plan, etc. These plans provide additional information or details, but do not supersede or replace the procedures outlined in this EOP.

C. If the incident involves implementation of response plans at both the county and state levels, the county and state Emergency Management Agencies shall serve to coordinate to the maximum extent practical to ensure effective actions.

XI. EOP DEVELOPMENT, MAINTAINANCE, AND DISTRIBUTION

A. EOP Development and Maintenance

1. The Erie County EMC will coordinate development and maintenance of the plan.
2. Delegation of responsibilities to write, review, and update the Erie County EOP will be at the discretion of the Erie County Emergency Management Coordinator.

County of Erie Emergency Operations Plan

3. The Erie County Emergency Management Coordinator, based on subject matter expertise, will delegate and assign writing, reviewing, and updating responsibilities of portions of the Erie County EOP to Erie County EMA staff members and other Erie County Department / Agency Representatives.
4. Based upon legislation, regulations or PEMA directives, incident-specific annexes require an annual review. Reviewing and updating all other plan components will occur biennially, at a minimum.
5. Whenever activation of this EOP occurs, whether in an emergency event or an exercise, an after-action review will follow.
6. A review of each section of the EOP will occur annually, and the Erie County Emergency Management Coordinator will receive a written report indicating concurrence and / or recommended changes.
7. Execution of the Erie County EOP will occur upon order of the County Executive, their authorized representative, or at the request of the Erie County Emergency Management Coordinator.
8. The "Record of Changes" contains documentation of the Erie County EOP revisions and / or changes.

B. Distribution

1. The Erie County EOP and the associated supporting materials are 'Controlled Documents'.
2. Portions of the Erie County EOP, by their very nature, are not available to the public.
3. Distribution of the Erie County EOP occurs on a regulatory or functional 'need to know' basis.
4. Erie County EOP copies for distribution occurs according to an approved distribution list (Appendix 3).
5. Erie County EOP distribution occurs via electronic format (including via e-mail or flash drive).
6. Plan holders will receive 'Controlled' copies of the Erie County EOP revisions.

XII. APPENDICES

- A. Authorities and References
- B. Terms and Definitions
- C. EOP Distribution List
- D. Map of Erie County

APPENDIX A

A. Authorities

1. The authorities for the Erie County EOP and the Erie County Emergency Management Program are the following:
 - a. The Pennsylvania Emergency Management Services Code
 - b. The Counterterrorism Planning, Preparedness, and Response Act of 2002

B. References

1. The Robert T. Stafford Disaster Relief and Assistance Act (42 U.S.C. § 5121 et. seq.)
2. The Pennsylvania Emergency Management Services Code (35 Pa C.S. § 7101 et. seq.)
3. The Pennsylvania Right-to Know Act of 2008
4. Homeland Security Presidential Directive – 5 (HSPD-5)
5. Pennsylvania Emergency Management Agency, “Commonwealth of Pennsylvania Multi-Hazard Identification and Risk Assessment,” July, 2000
6. Commonwealth of Pennsylvania, State Emergency Operations Plan (May, 2005)
7. Title III, Superfund Amendments and Reauthorization Act (SARA), October 17, 1986, Section 301-305, 311 and 312
8. Erie County’s Hazard Vulnerability Analysis
9. Developing and Maintaining State, Territorial, Tribal, and Local Government Emergency Plans, FEMA, March 2009.
10. County of Erie Incident Management Guide (COOP), October 10, 2005
11. Acronyms Abbreviations & Terms, FEMA P-524/March 2005
12. County of Erie, Resolution Number 6, 2010, Authorizing the County Executive to Declare a Local Disaster/Emergency.

APPENDIX B

A. Terms and Definitions

Access Control Points (ACP) – Manned posts established primarily by state or municipal police, augmented as necessary by the National Guard, on roads leading into a disaster area, for the purpose of controlling entry during an emergency.

Auxiliary Communications Service (ACS) – a group of duly enrolled volunteers who provide a communications surge capacity to local emergency management including, but not limited to, amateur radio, CB, telephony, computer, fax and other communication methods and support.

Activate – To start or place into action an activity or system (does not assume to be operational).

Agency Representative – An individual assigned to an incident from an assisting or cooperating agency that has been delegated authority to make decisions on matters affecting the agency's participation in the incident. Agency representatives will report to the liaison officer or to the incident commander/MACC Manager in the absence of a Liaison Officer.

All-Hazards – The spectrum of all types of hazards including accidents; technological events; natural disasters; terrorist attacks; warfare, including chemical and biological; pandemic or other biological emergencies, nuclear or explosive events.

ARES – Amateur Radio Disaster Services (formerly Amateur Radio Emergency Services)

Common Operating Picture – A continuously updated overview of an incident compiled throughout an incident's lifecycle, from data shared between integrated communication, information management, and intelligence and information sharing systems.

Congregate Household Pet Shelter – Any private or public facility that provides refuge to rescued household pets and the household pets of those in shelters, in response to a disaster or emergency.

Continuity of Operations Planning (COOP) – Planning to ensure that essential services continue during, or as soon as possible after a disaster or emergency event. In the public sector, COOP includes activities referred to as COG (Continuity of Government).

Coordination – Arranging in order, activities of equal importance to harmonize in a common effort. (For use in context with this document: authorizing and/or providing for coordination of activities relating to emergency disaster prevention, preparedness, response and recovery by State, local governments and Federal agencies).

Critical Incident Stress Management (CISM) – A system developed and published by the International Critical Incident Stress Foundation to head off the psychological effects of certain types of particularly traumatic incidents on emergency responders. The system involves trained teams of practitioners who conduct peer debriefings for affected responders. Teams in Pennsylvania are independent, and are managed and dispatched locally, or through the Department of Health, Bureau of Emergency Medical Services.

Customer Service Center – A place where disaster victims can come to receive emergency food, water and ice and perhaps tarps or cleaning supplies. These are normally located in an open parking lot providing drive-through service and a very limited variety of essential goods.

Deploy – To move to the assigned location in order to start operations.

Disaster Emergency – Those conditions which upon investigation may be found, actually or likely to affect seriously the safety, health or welfare of a substantial number of citizens of the county or preclude the operation or use of essential public facilities. A disaster should be of such magnitude or severity as to render essential state supplementation of county efforts or resources.

Emergency Alert System (EAS) Announcements – Official announcements made at the county or state level for the specific purpose of providing information, instructions or directions to the residents of the county. Announcements are made over the legally designated EAS network. EAS announcement does not preclude appropriate use of newspapers, radio and television for public information statements.

Emergency Management – The judicious planning, assignment and coordination of all available resources in an integrated program of prevention, mitigation, preparedness, response and recovery for emergencies of all kinds, whether from enemy attack, human-made or natural sources.

Emergency Operations Center (EOC) – A physical or virtual location from which leaders of a jurisdiction or organization coordinate information and resources to support incident management activities.

Emergency Services – The preparation for and the carrying out of functions, other than those for which military forces are primarily responsible, to prevent, minimize and provide emergency repair of injury and damage resulting from disaster, together with all other activities necessary or incidental to the preparation for and carrying out of those

functions. The functions include, without limitation, firefighting services, police services, medical and health services, rescue, engineering, disaster warning services, communications, radiological, shelter, chemical and other special weapons defense, evacuation of persons from stricken areas, emergency welfare services, emergency transportation, emergency resources management, existing or properly assigned functions of plant protection, temporary restoration of public utility services and other functions related to civilian protection.

Explosive Ordnance Disposal (EOD) – A specialized component of the U. S. military tasked with the retrieval and disposal of military ordnance. EOD Teams are available to assist civilian authorities in life threatening situations dealing with other explosive devices.

Food Desert – A tract in which at least 100 households are located more than one-half mile from the nearest supermarket and have no vehicle access; or at least 500 people, or 33 percent of the population, live more than 20 miles from the nearest supermarket, regardless of vehicle availability.

Governor's Proclamation of "Disaster Emergency" – A proclamation by the Governor upon finding that a disaster has occurred or that the occurrence or the threat of a disaster is imminent. This proclamation authorizes municipalities (including counties) to exercise certain powers without regard to time-consuming procedures and formalities prescribed by law (excepting mandatory constitutional requirements).

Hazardous Materials (HAZMAT) – Any substance or material in a quantity or form that may be harmful or injurious to humans, domestic animals, wildlife, economic crops or property when released into the environment. Hazardous materials may be chemical, biological, radiological, or explosive.

Hazards Vulnerability Analysis (HVA) – A compilation of natural, technological, and human-caused hazards and their predictability, frequency, duration, intensity and risk to population and property.

Household Pet – A domesticated animal, such as a cat, dog, bird, rabbit, rodent or turtle that is traditionally kept in a home for pleasure rather than for commercial purposes; can travel on commercial carriers and be housed in temporary facilities. Household pets do not include reptiles (except turtles), amphibians, fish, insects/arachnids, farm animals (including horses), and animals kept for racing purposes.

Human-Caused Disaster – Any industrial, nuclear or transportation accident, explosion, conflagration, power failure, natural resource shortage or other condition, including enemy action, weapons of mass destruction or overt paramilitary actions, or other acts such as sabotage resulting from human-made causes. This includes oil spills and other

injurious environmental contamination which threatens or causes substantial damage to property, human suffering, hardship or loss of life.

Joint Information Center – A facility established as the central point of contact for news media and interested parties to coordinate incident information activities, during an incident.

Liaison Officer – The Liaison Officer is the IC/UC point of contact for representatives of other governmental agencies, non-governmental organizations and/or the private sector (with no jurisdiction or legal authority) to gain input on the agency’s policies, resource availability and other incident-related matters.

Local Disaster Emergency (When declared by the County Executive) – The condition declared by the local governing body when, in their judgment, the threat or actual occurrence of a disaster requires coordinated local government action to prevent or alleviate the damage, loss, hardship or suffering threatened or caused. Only the Governor, upon petition of the local governing body, may declare a local emergency arising wholly or substantially out of a resource shortage.

Long Term Recovery Committee – A group established to oversee the recovery and reconstruction process and serve as an advisory committee to local government officials responsible for recovery activities. The long-term recovery committee should have representatives from all facets of the community (school, faith-based, business, and volunteer, etc.)

Mass Care Centers – Fixed facilities suitable for providing emergency lodging for victims of disaster left temporarily homeless. Mass Care centers are capable of providing all essential social services. Feeding may be done within a mass care center (in suitable dining facilities) or nearby.

Multi-Agency Coordination Center (MACC) – A physical or virtual location in which agency representatives from multiple agencies gather and provide incident support and coordination, including gathering and disseminating information, resource support, and policy direction.

Municipality – As defined in the Pennsylvania Constitution, “...a county, city, borough, incorporated town, township or similar unit of government...” (Article IX, Section 14, the Constitution of Pennsylvania).

National Risk Index – A dataset and online tool to help illustrate the United States communities most at risk for 18 natural hazards.

Natural Disaster – Any hurricane, tornado, storm, flood, high water, wind driven water, tidal wave, earthquake, landslide, mudslide, snowstorm, drought, fire, explosion or other catastrophe which results in substantial damage to property, hardship, suffering or possible loss of life.

Notification – The act of making known or informing. For use in context with this document: to transmit emergency information and instructions: (1) to Emergency Management Agencies, staff and associated organizations; (2) over the Emergency Alert System or by other means to the general public immediately after the sirens have been sounded.

Operational – Capable of accepting mission assignments at an indicated location with partial staff and resources.

Point of Dispensing (POD) – A facility established for the mass dispensing of pharmaceuticals. Operation of these PODs is described in the Strategic National Stockpile (SNS) plan.

Point of Distribution (POD) – Centralized points where supplies are delivered and the public travels to the site to pick up the commodities.

Political Subdivision – Any county, city, borough, township or incorporated town within the Commonwealth, as well as school districts, and water, sewer and other authorities that have governmental or taxing authority.

Poverty – The state of one who lacks the usual or socially acceptable amount of money or material possessions.

Presidential Declaration of "Emergency" – "Emergency" means any occasion or instance for which, in the determination of the President, Federal assistance is needed to supplement State and local efforts and capabilities to save lives and to protect property and public health and safety, or to lessen or avert the threat of a catastrophe in any part of the United States. IMPORTANT NOTE - Before federal assistance can be rendered, the Governor must first determine that the situation is of such severity and magnitude that effective response is beyond the capabilities of the State and affected county and municipal governments and that Federal assistance is necessary.

Presidential Declaration of "Major Disaster" – "Major Disaster" means any natural catastrophe (including any hurricane, tornado, storm, high water, wind driven water, tidal wave, tsunami, earthquake, volcanic eruption, landslide, mudslide, snowstorm, or drought), or, regardless of cause, any fire, flood, or explosion, in any part of the United States, which in the determination of the President causes damage of sufficient severity and magnitude to warrant major disaster assistance. To supplement the efforts and

County of Erie Emergency Operations Plan

available resources of States, local governments, and disaster relief organizations in alleviating the damage, loss, hardship, or suffering caused thereby.

Public Information Statements – Public announcements made by PEMA or county official spokespersons via newspapers, radio or television to explain government actions being taken to protect the public in the event of any public emergency.

RACES – Radio Amateur Civil Emergency Service. A part of the amateur radio service established under Federal Communication Commission rules and regulations to establish and maintain leadership and organizational infrastructure necessary to provide amateur radio communications in support of emergency management entities throughout the United States or its territories. RACES can be used during any disaster or emergency when normal governmental communications have sustained damage, or when additional communication is desired. Part of the Erie County ACS.

Reentry – The return to the normal community dwelling and operating sites by families, individuals, governments, and businesses once the evacuated area has been declared safe for occupancy.

Route Alerting – Route alerting is a supplement to siren systems accomplished by pre-designated teams traveling in vehicles along pre-assigned routes delivering an alert/warning message.

Service Animal – Any guide dog, signal dog or other animal individually trained to provide assistance to an individual with a disability, including, but not limited to, guiding individuals with impaired vision, alerting individuals with impaired hearing to intruders or sounds, providing minimal protection or rescue work, pulling a wheelchair or fetching dropped items.

Situational Awareness – The ability to identify, process, and comprehend critical information about an incident.

Social Vulnerability Index – Uses U.S. Census data to determine the relative social vulnerability of every census tract. The SVI ranks each tract on 14 social factors and groups them into four related themes.

Special Needs Population – Populations, whose members may have additional needs before, during, and after an incident in functional areas, including but not limited to: maintaining independence, communication, transportation, supervision, and medical care. Individuals in need of additional response assistance may include those who have disabilities; who live in institutionalized settings; who are elderly; who are children; who are from diverse cultures; who have limited English proficiency or are non-English speaking; or who are transportation disadvantaged.

Standby – To be ready to perform but waiting at home or other location for further instructions.

Strategic National Stockpile (SNS) – A program headed by the federal Centers for Disease Control that maintains large stocks of medications for distribution to the public during emergencies. The SNS relies on the state and county governments to have plans and play a major part in the distribution of the medications. This is done through a series of PODs (Points of Dispensing) that are located throughout the county.

Support – To act in a secondary or subordinate role to a primary activity by providing a means of maintenance or subsistence to keep the activity from failing under stress. (For use in context to this document: providing "unmet" needs, unforeseen requirements for supplies, equipment, services, training, etc.)

Unmet Needs – Capabilities and/or resources required to support emergency operations but neither available nor provided for at the respective levels of government.

Urban Search and Rescue (US&R) – A specific type of search and rescue that deal in urban settings, especially with collapsed building rescue. Pennsylvania has one team (PA Task Force-1) that is sponsored and certified by FEMA and managed by PEMA. Additionally, there are a series of US&R components in the nine Regional Task Forces.

Volunteer Emergency Communications – Any or all of those volunteer organizations such as RACES, ARES, CAP, and Coast Guard Auxiliary, which may provide emergency telecommunications services to responders or victims within the county. See Auxiliary Communications Service (ACS).

Weather Warning – Previously expected severe weather is occurring or is about to occur.

Weather Watch – Indicates that conditions and ingredients exist to trigger severe weather.

WebEOC – An online web-based system to assist in resource management, coordination, communication, and situational awareness used in the County of Erie MACC, some municipal EOCs, NWPAERG and the Commonwealth of Pennsylvania.

APPENDIX C

A. EOP Distribution List

Due to document sensitivity, distribution of the EOP occurs on a 'Need-to-Know' basis

1. Erie County EMA maintains a 'Master Distribution List' of the Erie County EOP
2. The following agencies will receive a copy of the Erie County EOP:
 - a. Office of the Erie County Executive
 - b. Erie County Council
 - c. Erie County Sheriff's Office
 - d. Erie County Coroner
 - e. Greater Erie Community Action Committee – The Area Agency on Aging
 - f. Penn State Cooperative Extension – Erie County Office
 - g. Erie County Assessment Office
 - h. Erie County Court Administrator/ President Judge
 - i. Erie County Clerk of Records
 - j. Erie County District Attorney
 - k. Erie County Department of Health
 - l. Erie County Department of Human Resources
 - m. Erie County Department of Human Services
 - n. Erie County Planning Department
 - o. Erie County Prison
 - p. Erie County Probation and Parole
 - q. Erie County Purchasing Department
 - r. Erie County Controller
 - s. Erie County Finance Department
 - t. Erie County Library
 - u. Adjoining Counties
 - v. NWPAERG Regional Task Force
 - w. PEMA Western Area Office
 - x. Local Municipal Governments / EMAs (Cities, Townships, Boroughs, etc.)
 - y. Other Interested Parties (military installations, large employers, etc.)

APPENDIX D

A. Map of Erie County

Due to size constraints, the Erie County MACC maintains copies of Erie County Maps

THIS PAGE INTENTIONALLY LEFT BLANK

County of Erie Emergency Operations Plan