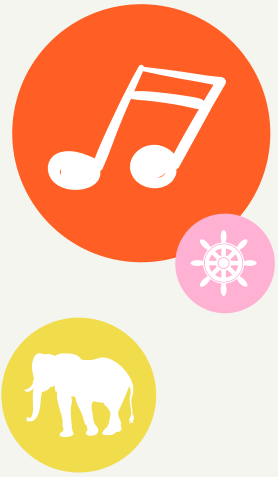


Erie County's 9 LEAD ASSETS



Collectively, the Lead Assets annually fuel the economy with more than **\$13.7 million in direct expenditures**. Their economic impact goes beyond direct expenditures, and their **total industry impact is estimated at more than \$20.3 million**.



ARTS, ENTERTAINMENT, AND RECREATION ARE KEY METRICS INCLUDED IN ERIE VITAL SIGNS

State and local mandates related to the public health pandemic resulted in the Lead Assets halting standard operations. As a result, the Lead Assets incurred a loss of revenue totaling more than **\$3.47 million**. Populations that suffered the most from programs and events being disrupted were youth, households living at or below the poverty level, and senior citizens.



Annually...



PEOPLE SERVED

through standard operations.



FREE EXPERIENCES

made accessible to youth and adults



OPPORTUNITIES FOR LEARNING

delivered to youth.



LEAD ASSETS

Erie Arts & Culture
Erie Art Museum
Erie County Historical Society
Erie Philharmonic
Erie Playhouse
Erie Zoological Society
expERIEence Children's Museum
Flagship Niagara League
Mercyhurst Institute for Arts & Culture

THE LEAD ASSETS HELP SHAPE ERIE COUNTY'S IDENTITY AND SERVE OUR QUALITY OF LIFE

