

Erie County Mortality Report, 2012-2014

December, 2017

Erie County Department of Health
606 West 2nd Street
Erie, PA 16507
Telephone: 814-451-6700
Website: [ECDH](#)



CONTENTS

Erie County Resident Deaths	2
Erie County Municipality Deaths	2
Leading Causes of Death	3
Trends in Age-Adjusted Death Rates for the Leading Causes, 2002-2004 to 2012-2014	7

This report was prepared by Jeff Quirk, Epidemiologist (jquirk@eriecountypa.gov). Data were provided by the Pennsylvania Department of Health, who disclaim responsibility for any of the content.

Erie County Resident Deaths

A total of 8,513 Erie County residents died during the period 2012 to 2014, for a corresponding crude death rate of 10.1 deaths per 1,000 population (Table 1). Overall, 4,173 (49.0%) deaths were in males and 4,340 (51.0%) were in females. The crude death rates for males and females were 10.1 and 10.2 deaths per 1,000, respectively.

Although only 8.6% of all resident deaths occurred in persons under the age of 50 years, nearly half (48.6%) occurred in those 80 years and older. Of the 64 total infant deaths, 50 (78.1%) occurred during the neonatal period (first 27 days of life). Males accounted for 64.1% of all infant deaths.

With respect to race and ethnicity, 7,971 (93.6%) deaths were in Whites, 401 (4.7%) were in Blacks, and 141 (1.7%) were in persons classified as Other or Unknown Race. A total of 72 (0.8%) deaths were in Hispanics or Latinos, of any race.

Table 1. Erie County Resident Deaths, 2012-2014

<u>Age Group</u>	<u>Total Population</u>	<u>Males</u>	<u>Females</u>
All Ages	8,513	4,173	4,340
0 - 9	79	49	30
10 - 19	29	27	2
20 - 29	132	97	35
30 - 39	140	81	59
40 - 49	348	218	130
50 - 59	805	483	322
60 - 69	1,209	770	439
70 - 79	1,637	834	803
80 and older	4,134	1,614	2,520
Infant deaths	64	41	33
< 28 days	50	33	17
28 - 364 days	14	8	6
<u>Race or Ethnicity</u>			
White	7,971	3,883	4,088
Black or African American	401	217	184
Hispanic or Latino (any race)	72	41	31

Erie County Municipality Deaths

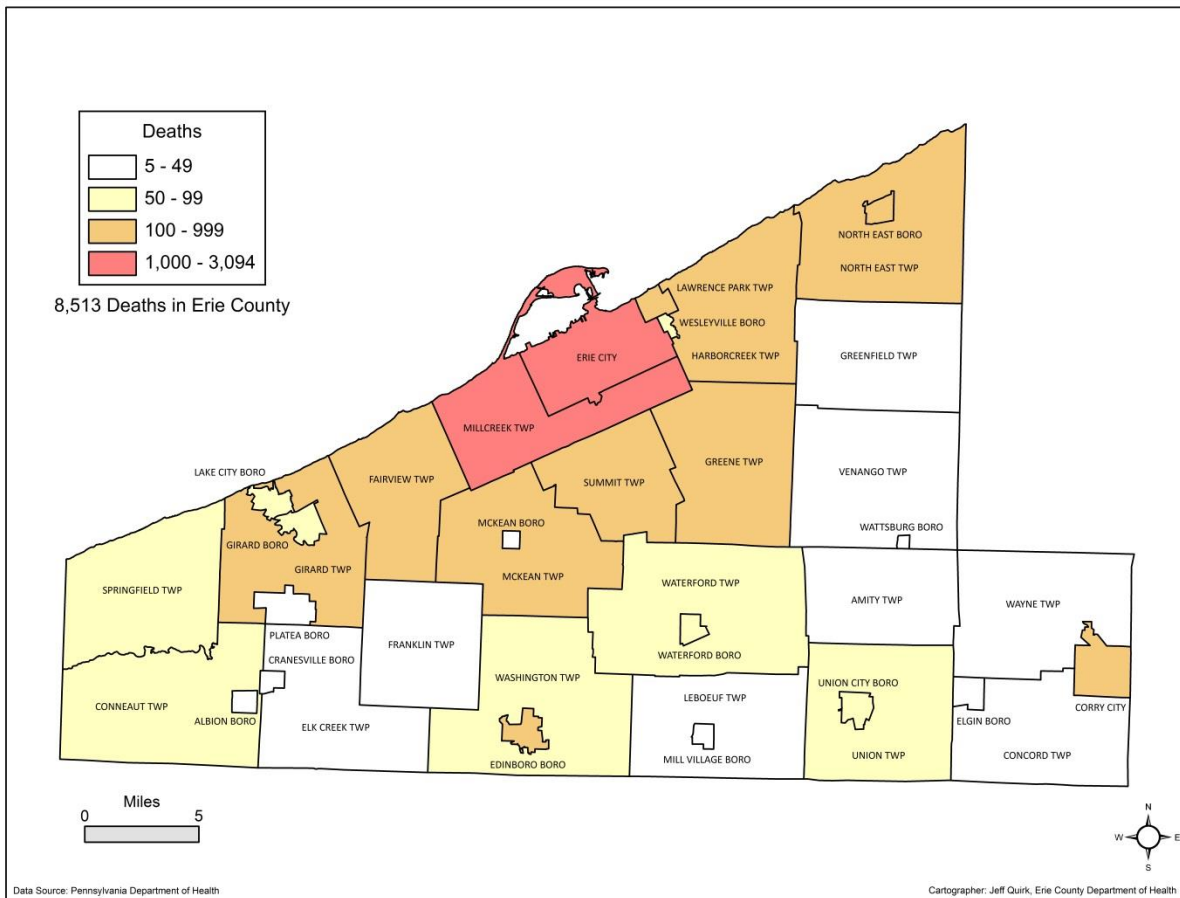
Among Erie County's 38 municipalities, resident deaths ranged from a low of 5 in Elgin Borough to a high of 3,094 in the City of Erie (Table 2, Figure 1). Erie County's three most populous municipalities - the City of Erie (100,164 residents in 2014 and 3,094 deaths), Millcreek Township (54,056 residents and 1,784 deaths), and Harborcreek Township (17,625 residents and 570 deaths) - accounted for nearly two-thirds (64.0%) of all deaths.

Of the 64 infant deaths, 38 (59.7%) were classified as City of Erie residents. The municipality with the next highest number was Millcreek Township, with 5 deaths.

Table 2. Erie County Municipality Deaths, 2012-2014

Municipality	Deaths	Municipality	Deaths
Albion Borough	30	LeBoeuf Township	28
Amity Township	26	McKean Borough	13
Concord Township	26	McKean Township	104
Conneaut Township	82	Millcreek Township	1,784
City of Corry	287	Mill Village Borough	12
Cranesville Borough	9	North East Borough	136
Edinboro Borough	103	North East Township	183
Elgin Borough	5	Platea Borough	12
Elk Creek Township	43	Springfield Township	86
City of Erie	3,094	Summit Township	187
Fairview Township	366	Union Township	59
Franklin Township	39	Union City Borough	78
Girard Borough	96	Venango Township	43
Girard Township	284	Washington Township	98
Greene Township	101	Waterford Borough	60
Greenfield Township	32	Waterford Township	87
Harborcreek Township	570	Wattsburg Borough	11
Lake City Borough	68	Wayne Township	40
Lawrence Park Township	138	Wesleyville Borough	93

Figure 1. Erie County Municipality Deaths, 2012-2014



Leading Causes of Death

In 2012-2014, Erie County's age-adjusted death rate for all causes of death was 799.0 deaths per 100,000 population. The rates for males and females were 945.8 and 678.7, respectively. With respect to race, the rates for Whites and Blacks were 783.4 and 980.1, respectively (Tables 3 and 4).

The 10 leading causes of death collectively accounted for nearly three-fourths (73.1%) of all county deaths. Heart disease and cancer accounted for 45.4% of deaths.

Erie County, as a whole, had a statistically significant higher rate than Pennsylvania for seven causes: all causes, heart disease, cancer, chronic lower respiratory diseases, stroke, diabetes mellitus, and nephritis.

Erie County males had a statistically significant lower rate than Pennsylvania males for influenza and pneumonia, but a significantly higher rate for all causes, heart disease, chronic lower respiratory diseases, stroke, and nephritis.

Erie County females had a statistically significant higher rate than Pennsylvania females for all causes, cancer, chronic lower respiratory diseases, and diabetes mellitus.

Erie County males had a statistically significant higher rate than Erie County females for six causes: all causes, heart disease, cancer, accidents, diabetes mellitus, and suicide. Although females had a higher rate than males for Alzheimer's disease, the difference was not statistically significant.

Erie County Blacks had a statistically significant higher rate than Erie County Whites for all causes, cancer, and diabetes mellitus.

Table 3. Erie County Leading Causes of Death – Age-Adjusted Rates by Sex, 2012-2014

Cause of Death	Total Population			Males			Females		
	Deaths	Erie Co.	PA	Deaths	Erie Co.	PA	Deaths	Erie Co.	PA
All Causes of Death	8,513	799.0	751.4	4,173	945.8	896.1	4,340	678.7	636.1
Heart Disease	1,961	186.2	176.1	988	238.0	223.5	1,010	143.3	139.9
Cancer (Malignant Neoplasms)	1,906	182.3	170.9	967	211.9	205.3	939	161.5	146.8
Chronic Lower Respiratory Diseases	503	47.0	38.1	242	54.5	44.3	261	42.5	34.0
Stroke (Cerebrovascular Diseases)	458	41.6	36.8	175	40.3	36.9	283	42.0	36.0
Accidents (Unintentional Injuries)	367	42.1	44.7	231	56.4	61.3	136	28.6	29.6
Diabetes Mellitus	309	29.4	22.2	178	39.2	26.7	131	22.2	18.6
Alzheimer's Disease	233	19.4	18.1	64	15.5	14.6	169	21.3	20.0
Nephritis, Nephrotic Syndrome & Nephrosis	219	19.6	15.7	94	21.0	19.5	125	18.9	13.3
Influenza & Pneumonia	146	12.9	14.4	61	14.2	17.7	85	12.1	12.3
Suicide (Intentional Self-Harm)	123	14.8	12.9	100	24.5	21.0	23	5.4	5.3

Note: Age-adjusted rates are per 100,000

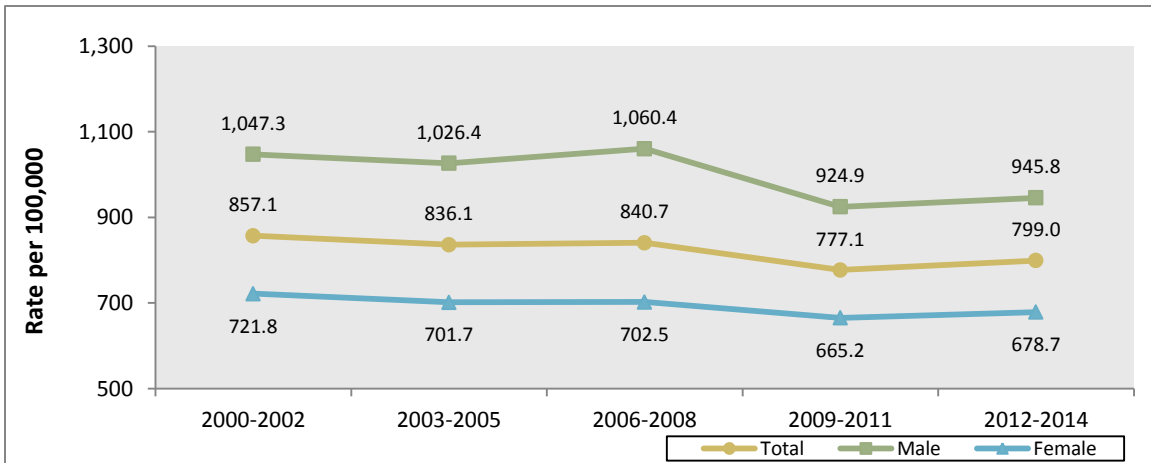
Table 4. Erie County Leading Causes of Death – Age-Adjusted Rates by Race, 2012-2014

Cause of Death	Total Population			Whites			Blacks		
	Deaths	Erie Co.	PA	Deaths	Erie Co.	PA	Deaths	Erie Co.	PA
All Causes of Death	8,513	799.0	751.4	7,471	783.4	729.8	401	980.1	908.2
Heart Disease	1,961	186.2	176.1	1,944	183.0	172.0	80	227.5	210.7
Cancer (Malignant Neoplasms)	1,906	182.3	170.9	1,766	177.6	166.8	109	269.9	212.1
Chronic Lower Respiratory Diseases	503	47.0	38.1	493	48.1	38.5	8	NA	33.3
Stroke (Cerebrovascular Diseases)	458	41.6	36.8	378	40.3	35.1	18	NA	49.9
Accidents (Unintentional Injuries)	367	42.1	44.7	339	43.1	45.4	17	NA	39.0
Diabetes Mellitus	309	29.4	22.2	278	27.5	20.9	25	56.7	34.2
Alzheimer's Disease	233	19.4	18.1	229	19.7	18.5	3	NA	12.7
Nephritis, Nephrotic Syndrome & Nephrosis	219	19.6	15.7	207	19.2	14.6	11	NA	27.0
Influenza & Pneumonia	146	12.9	14.4	142	13.1	14.3	3	NA	14.1
Suicide (Intentional Self-Harm)	123	14.8	12.9	110	14.7	13.7	10	NA	5.9

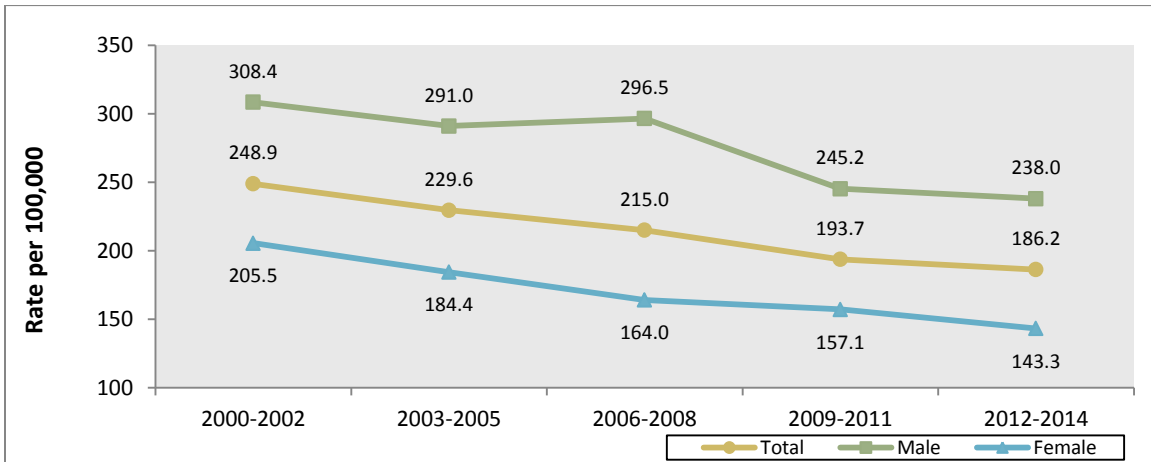
Notes: Age-adjusted rates are per 100,000 population; NA = Not available

Trends in Age-Adjusted Death Rates for the Leading Causes, 2002-2004 to 2012-2014

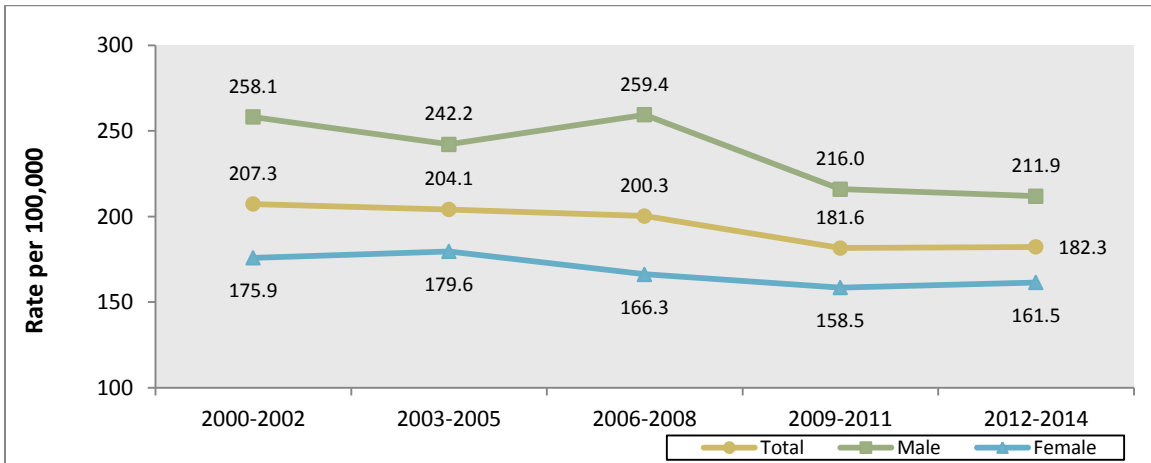
All Causes of Death



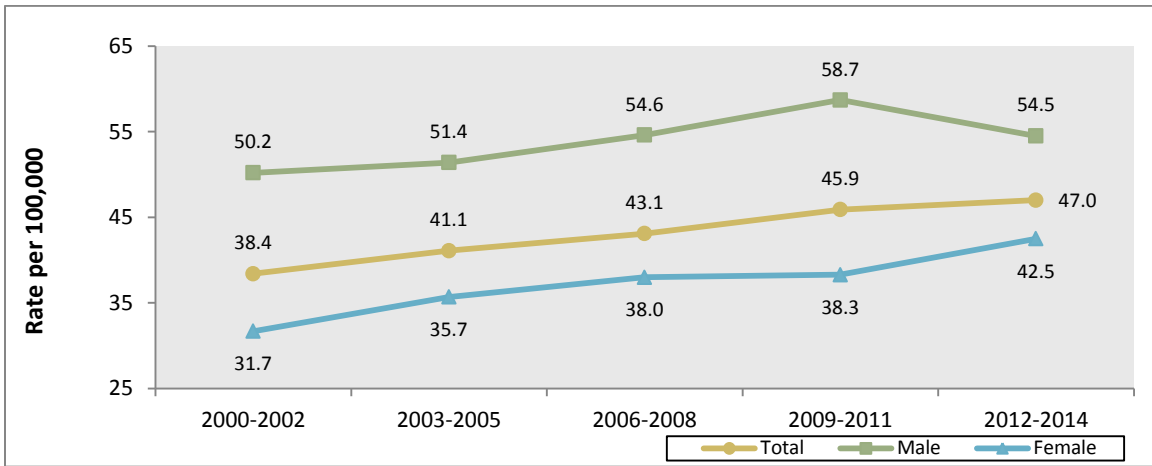
Heart Disease



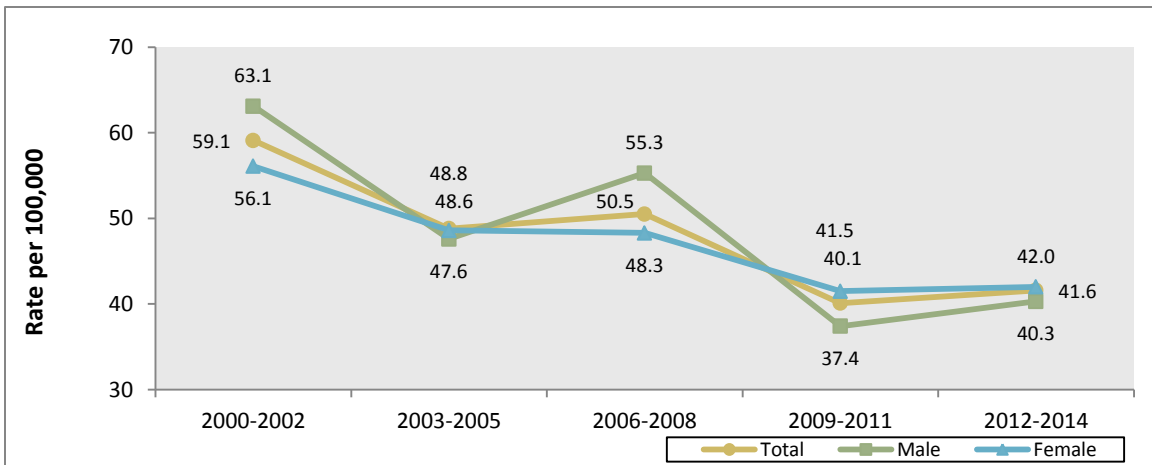
Cancer (Malignant Neoplasms)



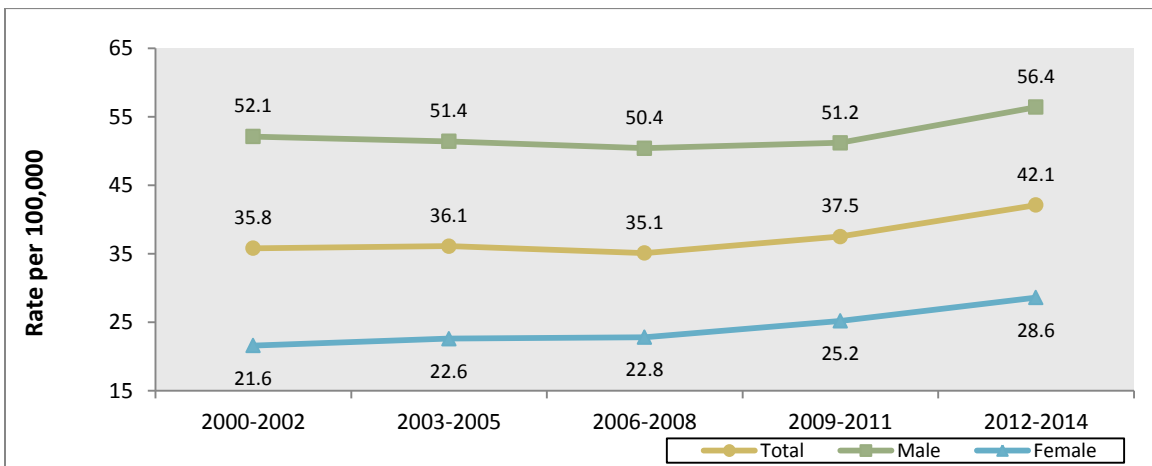
Chronic Lower Respiratory Diseases



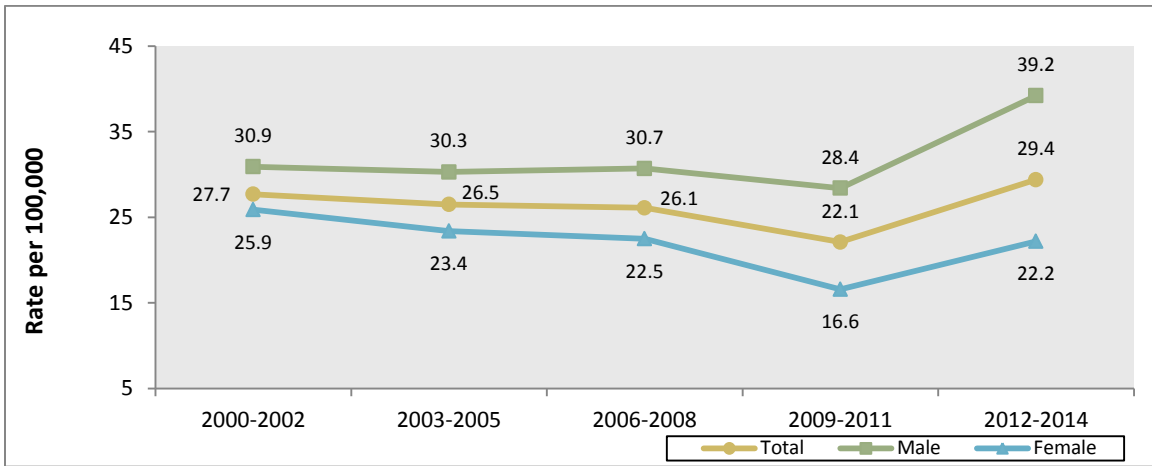
Stroke (Cerebrovascular Diseases)



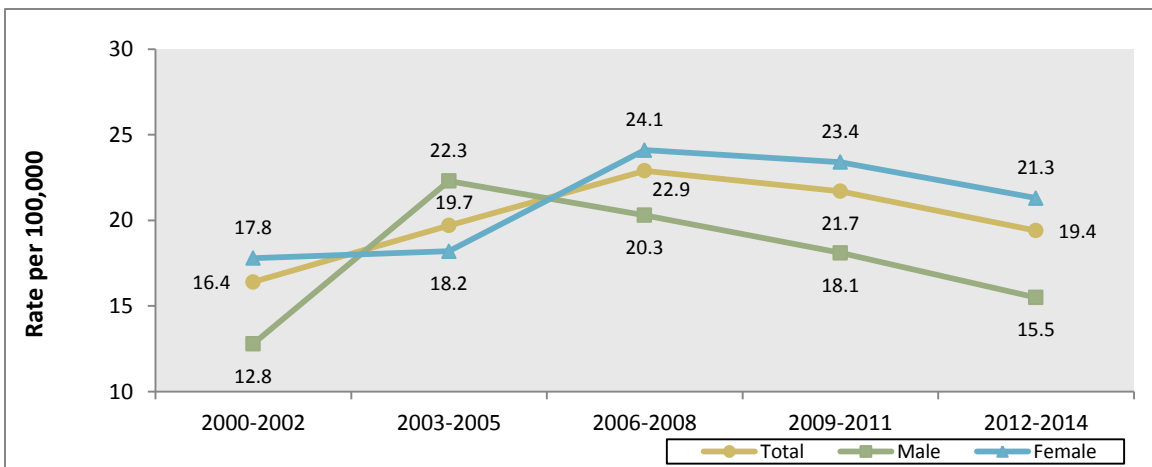
Accidents (Unintentional Injuries)



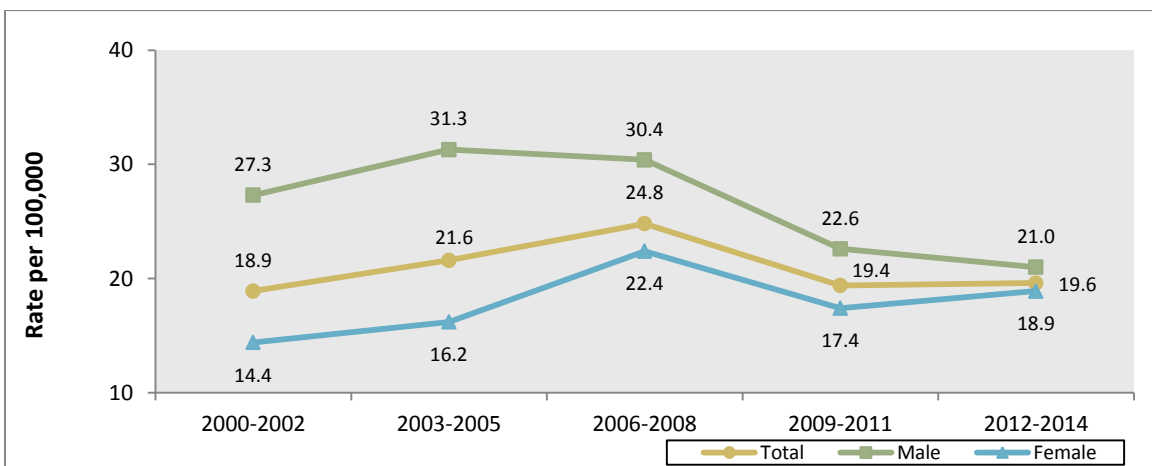
Diabetes Mellitus



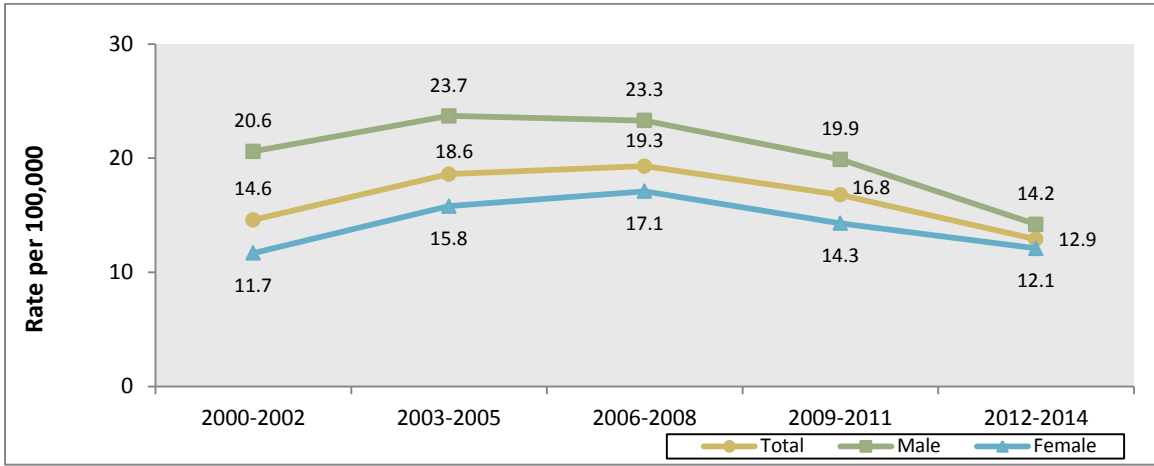
Alzheimer's Disease



Nephritis, Nephrotic Syndrome, and Nephrosis



Influenza and Pneumonia



Suicide

