

# Teen Pregnancies and Births in Erie County (PA), 1991-2005

---

Epidemiology

ERIE COUNTY DEPARTMENT OF HEALTH  
Public Health Preparedness Division



ERIE COUNTY  
DEPARTMENT OF HEALTH



PUBLIC HEALTH  
PREPAREDNESS  
DIVISION

*Teen Pregnancies and Births in Erie County (PA), 1991-2005*

Jeff Quirk, PhD  
Epidemiologist

May, 2008

Erie County Department of Health  
606 West Second Street  
Erie, PA 16507  
Tel: (814) 451-6700  
Fax: (814) 451-6767  
Website: <http://www.ecdh.org>

*“Our mission is to preserve, promote, and protect  
the health, safety and well-being of the people and the environment in Erie County.”*

**TABLE OF CONTENTS**

Introduction ..... 4

Erie County Selected Highlights ..... 6

Data Section One: Annual Erie County Reported Pregnancies, Outcomes, and Pregnancy Rates, 1991-2005 ..... 8

Data Section Two: Erie County, Pennsylvania, and United States Reported Pregnancy and Birth Rates by Age of Mother, 1991-2005 ..... 24

Data Section Three: Percent of Erie County Total Reported Pregnancies and Live Births by Age of Mother, 1991-2005 ..... 31

Data Section Four: Percent Unmarried by Age of Mother for Erie County and Pennsylvania Total Live Births, 1991-2005 ..... 35

Data Section Five: Erie County Births and Birth Rates by Age of Mother and Race/Ethnicity, 2003-2005 & Selected Characteristics of Erie County Total Live Births and Total Teenage Births (15-19 years), 2003-2005 ..... 38

Data Section Six: Erie County's Leading Municipalities for Teenage Births with Respective Birth Rates (15-19 years), 2003-2005 & Erie County Municipality Teenage Births and Birthrates (15-19 years), 2003-2005 ..... 41

Data Section Seven: City of Erie Teenage Births and Birth Rates (15-19 years) by Census Tract, 2003-2005 ..... 48

Acknowledgements: I would like to thank Valerie Bukowski (Erie County Department of Health) and Curtis Mettlin (Roswell Park Cancer Institute) for their helpful suggestions. Debra Smith (Grant Administrator, City of Erie) kindly provided the City of Erie Census Tract map.

## INTRODUCTION

This report presents detailed teenage pregnancy and birth data for Erie County residents for the fifteen-year period January 1, 1991 - December 31, 2005, with an emphasis on the most recent combined three-year period of reporting (2003-2005). Tables and figures are presented for a number of teenage pregnancy and birth variables, and several key points and statistics are described in the accompanying Erie County Selected Highlights section. The tables and figures are intended to be largely self-explanatory and, hopefully, are presented in a format that permits readers to access readily the information most relevant to their particular needs.

Data and information provided in this report were obtained from the following sources: (1) the Vital Statistics Database, Erie County Department of Health ([www.ecdh.org](http://www.ecdh.org)), (2) the Bureau of Health Statistics and Research, Pennsylvania Department of Health ([www.dsf.health.state.pa.us](http://www.dsf.health.state.pa.us)), (3) the Pennsylvania State Data Center ([www.pasdc.hbg.psu.edu](http://www.pasdc.hbg.psu.edu)), (4) the U.S. Census Bureau ([www.census.gov](http://www.census.gov)), and (5) the National Center for Health Statistics ([www.cdc.gov/nchs](http://www.cdc.gov/nchs)). State and federal agencies specifically disclaim responsibility for any of the analyses, interpretations, or conclusions that appear in this report.

Intercensal year population estimates were used for the computation of rates for the years 1991-1999 and 2001-2005. These estimates were produced jointly by the U.S. Census Bureau and the State Data Center of the Pennsylvania State University at Harrisburg under the Federal-State Cooperative Program for Local Population Estimates. Enumerated population figures from the 2000 census were used to compute rates for the year 2000.

The term "reported pregnancies" includes three combined sources of data - live births, fetal deaths, and induced abortions. Readers should note that the reporting of live births for Erie County and Pennsylvania residents are considered to be nearly complete since there is an agreement among all registration areas in the U.S. for the exchange of resident birth certificate copies. However, induced abortions and fetal deaths are thought to be under-reported on an annual basis for Erie County and Pennsylvania residents because abortions are reported for only in-state procedures, and spontaneous fetal deaths under 16 weeks gestation are excluded from data collection.

## ERIE COUNTY SELECTED HIGHLIGHTS

- During the fifteen-year period 1991-2005, 91% of all reported pregnancies to mothers 15-19 years of age resulted in a live birth, 8% resulted in an induced abortion, and only 1% in a fetal death. Since live births closely approximated the total number of reported pregnancies, Erie County teenage pregnancy and birth rates were quite similar (Data Sections One and Two, pp. 8-30).
- From 1991-2005, the birth rate for females aged 15-19 years gradually fell and dropped by 36% overall. The rate for younger teenagers 15-17 years dropped by nearly half (49%), while the rate for older teenagers 18-19 years dropped by 22% (Data Section Two, pp. 24-30).
- Births to mothers under 20 years of age accounted for approximately 15% of all resident live births in 1991, compared to 12% in 2005 (Data Section Three, pp. 31-34).
- Among births to females 15-19 years of age during 2005, 91% were to unmarried mothers (Data Section Four, pp. 35-37).
- During the three-year period 2003-2005, teenage birth rates for females 15-19 years of age differed significantly by race and Hispanic origin of mother. Compared to the rate for Whites, the rate was 281% higher for Blacks and 431% higher for Hispanics (Data Section Five, pp. 38-40).

- During 2003-2005, nearly 40% of births to females aged 15-19 years were to mothers who had smoked during their pregnancies, and 25% of births were to mothers who had not received prenatal care during the first trimester. Additionally, 19% of births to teenage mothers did not have a father identified on the birth certificate (Data Section Five, pp. 38-40).
  
- In 2003-2005, almost a quarter of all births to Black and Hispanic mothers were to teenagers 15-19 years of age. Among Whites, only 10% of births were to teenage mothers (Data Section Five, pp. 38-40).
  
- In 2003-2005, seven of Erie County's thirty-eight municipalities had 20 or more live births to females 15-19 years of age. These municipalities (City of Erie, Millcreek Township, City of Corry, Union City Borough, Harborcreek Township, North East Borough, and North East Township) collectively accounted for 81% of all births to teenage mothers. (Data Section Six, pp. 41-47).
  
- Erie County's teenage birth rate was 34 births per 1,000 females aged 15-19 years during 2003-2005. Union City Borough (97 births per 1,000), the City of Erie (60 births per 1,000), and the City of Corry (54 births per 1,000) recorded the highest teenage birth rates among Erie County's seven leading municipalities (Data Section Six, pp. 41-47).
  
- In 2003-2005, three out of every five births to females 15-19 years of age occurred to mothers who resided in the City of Erie. Census tracts 7 and 8 had by far both the highest number of teenage births and observed birth rates among the thirty census tracts within the City of Erie (Data Sections Six and Seven, pp. 41-50).

DATA SECTION ONE

Annual Erie County Reported Pregnancies, Outcomes, and Pregnancy Rates, 1991-2005



1991

***Erie County Reported Pregnancies & Outcomes***

<u>Age of Woman</u>	<u>Reported Pregnancies</u>	<u>Live Births</u>	<u>Fetal Deaths</u>	<u>Induced Abortions</u>
All ages	4,429	4,138	43	248
10-14	15	15	0	0
15-17	249	220	3	26
18-19	410	368	6	36
15-19	659	588	9	62

***Erie County and Pennsylvania Reported Pregnancy Rates***

<u>Age of Woman</u>	<u>Erie County Female Population Count</u>	<u>Erie County Rate</u>	<u>PA Rate</u>
15-44	64,249	68.9	80.9
10-14	9,589	1.6	2.2
15-17	5,625	44.3	45.8
18-19	5,696	72.0	100.3
15-19	11,321	58.2	69.8

Notes:

Fetal deaths were reported for only  $\geq 16$  weeks gestation and induced abortions were reported for only in-state procedures. Pregnancy rates are per 1,000 female population for each specified age group.

1992

***Erie County Reported Pregnancies & Outcomes***

<u>Age of Woman</u>	<u>Reported Pregnancies</u>	<u>Live Births</u>	<u>Fetal Deaths</u>	<u>Induced Abortions</u>
All ages	4,420	4,091	42	287
10-14	16	13	0	3
15-17	235	213	4	18
18-19	430	376	3	51
15-19	665	589	7	69

***Erie County and Pennsylvania Reported Pregnancy Rates***

<u>Age of Woman</u>	<u>Erie County Female Population Count</u>	<u>Erie County Rate</u>	<u>PA Rate</u>
15-44	64,241	68.8	79.0
10-14	9,624	1.7	2.4
15-17	5,633	41.7	43.5
18-19	5,703	75.4	92.5
15-19	11,336	58.7	64.7

Notes:

Fetal deaths were reported for only  $\geq 16$  weeks gestation and induced abortions were reported for only in-state procedures. Pregnancy rates are per 1,000 female population for each specified age group.

1993

***Erie County Reported Pregnancies & Outcomes***

<u>Age of Woman</u>	<u>Reported Pregnancies</u>	<u>Live Births</u>	<u>Fetal Deaths</u>	<u>Induced Abortions</u>
All ages	4,427	4,111	39	277
10-14	16	14	1	1
15-17	219	190	2	27
18-19	382	334	7	41
15-19	601	524	9	68

***Erie County and Pennsylvania Reported Pregnancy Rates***

<u>Age of Woman</u>	<u>Erie County Female Population Count</u>	<u>Erie County Rate</u>	<u>PA Rate</u>
15-44	63,813	69.4	77.9
10-14	9,613	1.7	2.3
15-17	5,733	38.2	42.7
18-19	5,805	65.8	88.4
15-19	11,538	52.1	62.3

Notes:

Fetal deaths were reported for only  $\geq 16$  weeks gestation and induced abortions were reported for only in-state procedures. Pregnancy rates are per 1,000 female population for each specified age group.

1994

***Erie County Reported Pregnancies & Outcomes***

<u>Age of Woman</u>	<u>Reported Pregnancies</u>	<u>Live Births</u>	<u>Fetal Deaths</u>	<u>Induced Abortions</u>
All ages	4,157	3,929	36	192
10-14	17	15	0	2
15-17	239	231	0	8
18-19	407	371	7	29
15-19	646	602	7	37

***Erie County and Pennsylvania Reported Pregnancy Rates***

<u>Age of Woman</u>	<u>Erie County Female Population Count</u>	<u>Erie County Rate</u>	<u>PA Rate</u>
15-44	63,444	65.5	75.1
10-14	9,626	1.8	2.2
15-17	5,708	41.9	39.1
18-19	5,779	70.4	84.2
15-19	11,487	56.2	58.3

Notes:

Fetal deaths were reported for only  $\geq 16$  weeks gestation and induced abortions were reported for only in-state procedures. Pregnancy rates are per 1,000 female population for each specified age group.

1995

***Erie County Reported Pregnancies & Outcomes***

<u>Age of Woman</u>	<u>Reported Pregnancies</u>	<u>Live Births</u>	<u>Fetal Deaths</u>	<u>Induced Abortions</u>
All ages	3,941	3,676	40	225
10-14	20	15	0	5
15-17	194	184	1	9
18-19	350	300	7	43
15-19	544	484	8	52

***Erie County and Pennsylvania Reported Pregnancy Rates***

<u>Age of Woman</u>	<u>Erie County Female Population Count</u>	<u>Erie County Rate</u>	<u>PA Rate</u>
15-44	62,610	62.9	72.8
10-14	9,561	2.1	1.9
15-17	5,845	33.2	36.9
18-19	5,918	59.1	83.0
15-19	11,763	46.2	56.3

Notes:

Fetal deaths were reported for only  $\geq 16$  weeks gestation and induced abortions were reported for only in-state procedures. Pregnancy rates are per 1,000 female population for each specified age group.

1996

***Erie County Reported Pregnancies & Outcomes***

<u>Age of Woman</u>	<u>Reported Pregnancies</u>	<u>Live Births</u>	<u>Fetal Deaths</u>	<u>Induced Abortions</u>
All ages	3,900	3,674	50	176
10-14	18	14	0	4
15-17	211	196	4	11
18-19	366	331	5	30
15-19	577	527	9	41

***Erie County and Pennsylvania Reported Pregnancy Rates***

<u>Age of Woman</u>	<u>Erie County Female Population Count</u>	<u>Erie County Rate</u>	<u>PA Rate</u>
15-44	62,053	62.8	71.8
10-14	9,608	1.9	1.8
15-17	5,721	36.9	34.9
18-19	5,793	63.2	80.9
15-19	11,514	50.1	54.4

Notes:

Fetal deaths were reported for only  $\geq 16$  weeks gestation and induced abortions were reported for only in-state procedures. Pregnancy rates are per 1,000 female population for each specified age group.

1997

***Erie County Reported Pregnancies & Outcomes***

<u>Age of Woman</u>	<u>Reported Pregnancies</u>	<u>Live Births</u>	<u>Fetal Deaths</u>	<u>Induced Abortions</u>
All ages	3,680	3,484	38	158
10-14	13	12	0	1
15-17	183	171	4	8
18-19	336	319	5	12
15-19	519	490	9	20

***Erie County and Pennsylvania Reported Pregnancy Rates***

<u>Age of Woman</u>	<u>Erie County Female Population Count</u>	<u>Erie County Rate</u>	<u>PA Rate</u>
15-44	61,754	59.6	70.9
10-14	9,530	1.4	1.6
15-17	5,906	31.0	31.7
18-19	5,980	56.2	79.2
15-19	11,886	43.7	51.8

Notes:

Fetal deaths were reported for only  $\geq 16$  weeks gestation and induced abortions were reported for only in-state procedures. Pregnancy rates are per 1,000 female population for each specified age group.

1998

***Erie County Reported Pregnancies & Outcomes***

<u>Age of Woman</u>	<u>Reported Pregnancies</u>	<u>Live Births</u>	<u>Fetal Deaths</u>	<u>Induced Abortions</u>
All ages	3,714	3,541	37	136
10-14	6	5	0	1
15-17	167	157	2	8
18-19	337	319	2	16
15-19	504	476	4	24

***Erie County and Pennsylvania Reported Pregnancy Rates***

<u>Age of Woman</u>	<u>Erie County Female Population Count</u>	<u>Erie County Rate</u>	<u>PA Rate</u>
15-44	61,135	60.8	71.7
10-14	9,356	0.6	1.4
15-17	5,984	27.9	32.0
18-19	6,058	55.6	75.4
15-19	12,042	41.9	51.0

Notes:

Fetal deaths were reported for only  $\geq 16$  weeks gestation and induced abortions were reported for only in-state procedures. Pregnancy rates are per 1,000 female population for each specified age group.



1999

***Erie County Reported Pregnancies & Outcomes***

<u>Age of Woman</u>	<u>Reported Pregnancies</u>	<u>Live Births</u>	<u>Fetal Deaths</u>	<u>Induced Abortions</u>
All ages	3,694	3,519	19	156
10-14	9	9	0	0
15-17	162	148	1	13
18-19	300	285	0	15
15-19	462	433	1	28

***Erie County and Pennsylvania Reported Pregnancy Rates***

<u>Age of Woman</u>	<u>Erie County Female Population Count</u>	<u>Erie County Rate</u>	<u>PA Rate</u>
15-44	60,860	60.7	71.5
10-14	9,373	1.0	1.5
15-17	6,034	26.8	30.0
18-19	6,109	49.1	75.3
15-19	12,143	38.0	49.7

Notes:

Fetal deaths were reported for only  $\geq 16$  weeks gestation and induced abortions were reported for only in-state procedures. Pregnancy rates are per 1,000 female population for each specified age group.

2000

***Erie County Reported Pregnancies & Outcomes***

<u>Age of Woman</u>	<u>Reported Pregnancies</u>	<u>Live Births</u>	<u>Fetal Deaths</u>	<u>Induced Abortions</u>
All ages	3,652	3,471	25	156
10-14	11	8	2	1
15-17	159	146	1	12
18-19	284	254	1	29
15-19	443	400	2	41

***Erie County and Pennsylvania Reported Pregnancy Rates***

<u>Age of Woman</u>	<u>Erie County Female Population Count</u>	<u>Erie County Rate</u>	<u>PA Rate</u>
15-44	59,958	60.9	70.8
10-14	9,881	1.1	1.4
15-17	6,068	26.2	28.1
18-19	4,952	57.4	78.5
15-19	11,020	40.2	49.1

Notes:

Fetal deaths were reported for only  $\geq 16$  weeks gestation and induced abortions were reported for only in-state procedures. Pregnancy rates are per 1,000 female population for each specified age group.

2001

***Erie County Reported Pregnancies & Outcomes***

<u>Age of Woman</u>	<u>Reported Pregnancies</u>	<u>Live Births</u>	<u>Fetal Deaths</u>	<u>Induced Abortions</u>
All ages	3,589	3,369	39	181
10-14	8	6	1	1
15-17	163	150	4	9
18-19	327	300	2	25
15-19	490	450	6	34

***Erie County and Pennsylvania Reported Pregnancy Rates***

<u>Age of Woman</u>	<u>Erie County Female Population Count</u>	<u>Erie County Rate</u>	<u>PA Rate</u>
15-44	59,368	60.5	70.9
10-14	9,728	0.8	1.3
15-17	6,153	26.5	25.2
18-19	5,022	65.1	75.5
15-19	11,175	43.8	46.0

Notes:

Fetal deaths were reported for only  $\geq 16$  weeks gestation and induced abortions were reported for only in-state procedures. Pregnancy rates are per 1,000 female population for each specified age group.

2002

***Erie County Reported Pregnancies & Outcomes***

<u>Age of Woman</u>	<u>Reported Pregnancies</u>	<u>Live Births</u>	<u>Fetal Deaths</u>	<u>Induced Abortions</u>
All ages	3,625	3,372	32	221
10-14	6	5	0	1
15-17	151	141	1	9
18-19	294	261	4	29
15-19	445	402	5	38

***Erie County and Pennsylvania Reported Pregnancy Rates***

<u>Age of Woman</u>	<u>Erie County Female Population Count</u>	<u>Erie County Rate</u>	<u>PA Rate</u>
15-44	58,953	61.5	70.1
10-14	9,641	0.6	1.2
15-17	6,191	24.4	23.7
18-19	5,053	58.2	69.7
15-19	11,244	39.6	42.5

Notes:

Fetal deaths were reported for only  $\geq 16$  weeks gestation and induced abortions were reported for only in-state procedures. Pregnancy rates are per 1,000 female population for each specified age group.

2003

***Erie County Reported Pregnancies & Outcomes***

<u>Age of Woman</u>	<u>Reported Pregnancies</u>	<u>Live Births</u>	<u>Fetal Deaths</u>	<u>Induced Abortions</u>
All ages	3,663	3,299	24	340
10-14	9	6	0	3
15-17	146	131	3	12
18-19	297	258	0	39
15-19	443	389	3	51

***Erie County and Pennsylvania Reported Pregnancy Rates***

<u>Age of Woman</u>	<u>Erie County Female Population Count</u>	<u>Erie County Rate</u>	<u>PA Rate</u>
15-44	58,641	62.5	72.3
10-14	9,497	0.9	1.2
15-17	6,379	22.9	24.6
18-19	5,205	57.1	69.0
15-19	11,584	38.2	42.7

Notes:

Fetal deaths were reported for only  $\geq 16$  weeks gestation and induced abortions were reported for only in-state procedures. Pregnancy rates are per 1,000 female population for each specified age group.

2004

***Erie County Reported Pregnancies & Outcomes***

<u>Age of Woman</u>	<u>Reported Pregnancies</u>	<u>Live Births</u>	<u>Fetal Deaths</u>	<u>Induced Abortions</u>
All ages	3,649	3,280	16	353
10-14	11	7	0	4
15-17	120	104	0	16
18-19	306	260	2	44
15-19	426	364	2	60

***Erie County and Pennsylvania Reported Pregnancy Rates***

<u>Age of Woman</u>	<u>Erie County Female Population Count</u>	<u>Erie County Rate</u>	<u>PA Rate</u>
15-44	58,942	61.9	71.7
10-14	9,499	1.2	1.1
15-17	6,342	18.9	23.0
18-19	5,175	59.1	67.4
15-19	11,517	37.0	41.2

Notes:

Fetal deaths were reported for only  $\geq 16$  weeks gestation and induced abortions were reported for only in-state procedures. Pregnancy rates are per 1,000 female population for each specified age group.

2005

***Erie County Reported Pregnancies & Outcomes***

<u>Age of Woman</u>	<u>Reported Pregnancies</u>	<u>Live Births</u>	<u>Fetal Deaths</u>	<u>Induced Abortions</u>
All ages	3,496	3,223	30	243
10-14	9	7	1	1
15-17	134	125	2	7
18-19	275	259	1	15
15-19	409	384	3	22

***Erie County and Pennsylvania Reported Pregnancy Rates***

<u>Age of Woman</u>	<u>Erie County Female Population Count</u>	<u>Erie County Rate</u>	<u>PA Rate</u>
15-44	58,198	60.1	71.9
10-14	9,353	1.0	1.1
15-17	6,324	21.2	22.3
18-19	5,161	53.3	67.1
15-19	11,485	35.6	40.7

Notes:

Fetal deaths were reported for only  $\geq 16$  weeks gestation and induced abortions were reported for only in-state procedures. Pregnancy rates are per 1,000 female population for each specified age group.

DATA SECTION TWO

Erie County, Pennsylvania, and United States Reported Pregnancy and Birth Rates by Age of Mother, 1991-2005



## ***Erie County, Pennsylvania, and United States Reported Pregnancy Rates by Age of Mother, 1991-2005***

<u>Year</u>	<u>15-44</u>			<u>10-14</u>			<u>15-17</u>			<u>18-19</u>			<u>15-19</u>		
	<u>Erie</u>	<u>PA</u>	<u>US</u>	<u>Erie</u>	<u>PA</u>	<u>US</u>	<u>Erie</u>	<u>PA</u>	<u>US</u>	<u>Erie</u>	<u>PA</u>	<u>US</u>	<u>Erie</u>	<u>PA</u>	<u>US</u>
1991	68.9	80.9	112.7	1.6	2.2	3.3	44.3	45.8	76.1	72.0	100.3	172.1	58.2	69.8	116.4
1992	68.8	79.0	111.1	1.7	2.4	3.3	41.7	43.5	73.5	75.4	92.5	169.3	58.7	64.7	112.3
1993	69.4	77.9	108.8	1.7	2.3	3.2	38.2	42.7	72.7	65.8	88.4	164.1	52.1	62.3	109.4
1994	66.5	75.1	106.1	1.8	2.2	3.2	41.9	39.1	71.1	70.4	84.2	159.6	56.2	58.3	106.1
1995	62.9	72.8	103.5	2.1	1.9	2.9	33.2	36.9	67.4	59.1	83.0	153.4	46.2	56.3	101.1
1996	62.8	71.8	102.8	1.9	1.8	2.7	36.9	34.9	63.4	63.2	80.9	149.0	50.1	54.4	97.0
1997	59.6	70.9	101.6	1.4	1.6	2.4	31.0	31.7	59.5	56.2	79.2	144.3	43.7	51.8	92.7
1998	60.8	71.7	102.2	0.6	1.4	2.3	27.9	32.0	56.7	55.6	75.4	140.3	41.9	51.0	90.1
1999	60.7	71.5	102.2	1.0	1.5	2.1	26.8	30.0	53.1	49.1	75.3	136.6	38.0	49.7	86.9
2000	60.9	70.8	104.1	1.1	1.4	2.0	26.2	28.1	50.8	57.4	78.5	134.5	40.2	49.1	84.8
2001	60.5	70.9	102.9	0.8	1.3	1.8	26.5	25.2	46.7	65.1	75.5	130.5	43.8	46.0	80.4
2002	61.5	70.1	101.9	0.6	1.2	1.7	24.4	23.7	44.1	58.2	69.7	124.4	39.6	42.5	76.0
2003	62.5	72.3	103.2	0.9	1.2	1.6	22.9	24.6	42.9	57.1	69.0	120.7	38.2	42.7	73.7
2004	61.9	71.7	103.0	1.2	1.1	1.6	18.9	23.0	41.5	59.1	67.4	118.6	37.0	41.2	72.2
2005	60.1	71.9	---	1.0	1.1	---	21.2	22.3	---	53.3	67.1	---	35.6	40.7	---

**Notes:**

Pregnancy rates are per 1,000 female population for each specified age group.

Erie County and Pennsylvania reported pregnancy rate estimates include only fetal deaths  $\geq$  16 weeks gestation and only in-state induced abortion procedures.

United States pregnancy rate estimates include all fetal deaths, regardless of gestational length.

United States data for 2005 is currently not available.

## ***Erie County, Pennsylvania, and United States Birth Rates by Age of Mother, 1991-2005***

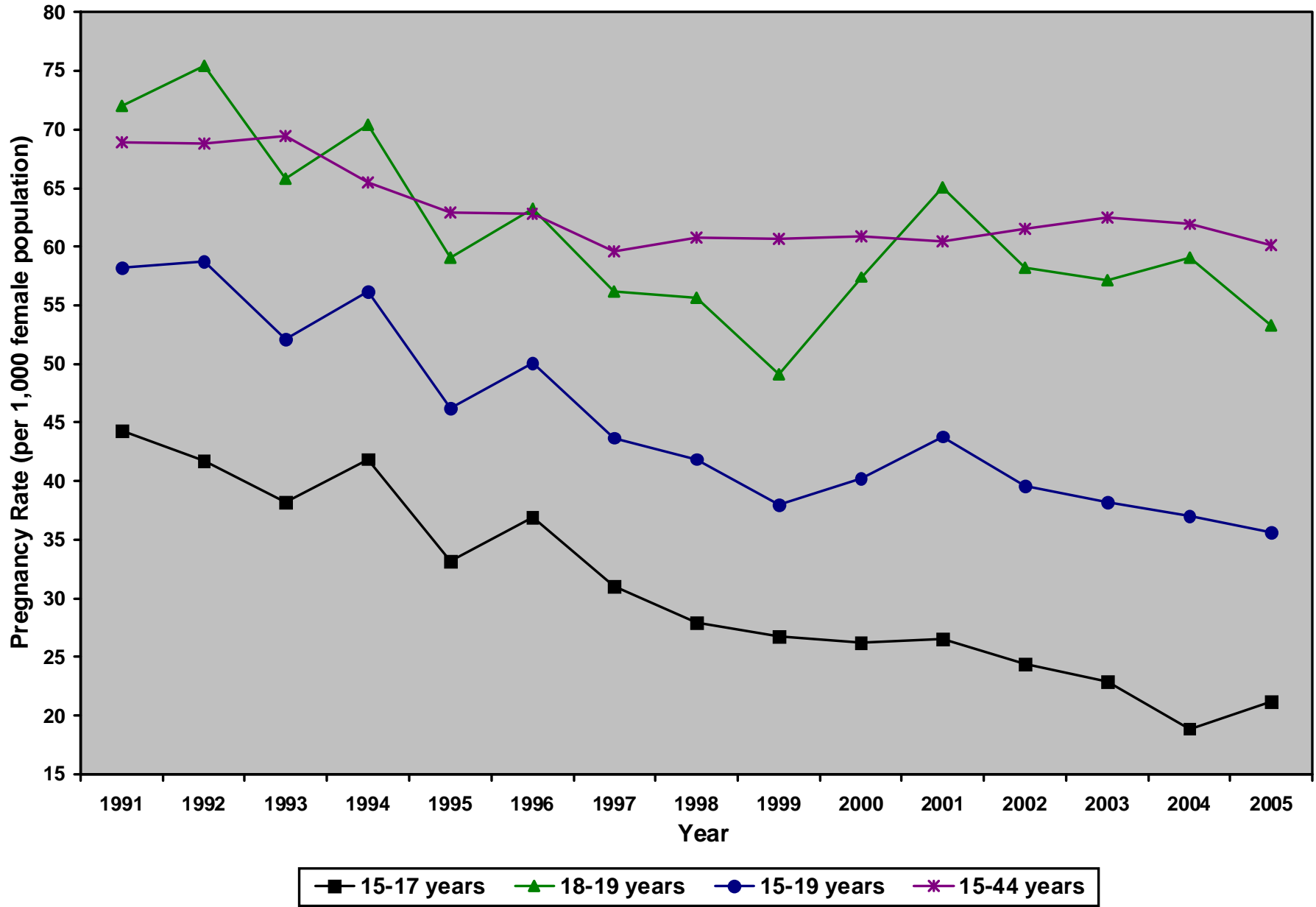
<u>Year</u>	<u>15-44</u>			<u>10-14</u>			<u>15-17</u>			<u>18-19</u>			<u>15-19</u>		
	<u>Erie</u>	<u>PA</u>	<u>US</u>	<u>Erie</u>	<u>PA</u>	<u>US</u>	<u>Erie</u>	<u>PA</u>	<u>US</u>	<u>Erie</u>	<u>PA</u>	<u>US</u>	<u>Erie</u>	<u>PA</u>	<u>US</u>
1991	64.4	62.5	69.3	1.6	1.1	1.4	39.1	27.8	38.6	64.6	64.4	94.0	51.9	43.9	61.8
1992	63.7	61.2	68.4	1.4	1.2	1.4	37.8	27.4	37.6	65.9	60.0	93.6	52.0	41.5	60.3
1993	64.4	60.2	67.0	1.5	1.0	1.4	33.1	26.6	37.5	57.5	57.6	91.1	45.4	39.9	59.0
1994	61.9	59.4	65.9	1.6	1.1	1.4	40.5	26.7	37.2	64.2	57.2	90.2	52.4	39.6	58.2
1995	58.7	57.9	64.6	1.6	1.0	1.3	31.5	25.8	35.5	50.7	56.7	87.7	41.1	38.9	56.0
1996	59.2	57.2	64.1	1.5	0.9	1.2	34.3	24.6	33.3	57.1	54.8	84.7	45.8	37.4	53.5
1997	56.4	56.4	63.6	1.3	0.8	1.1	29.0	22.0	31.4	53.3	53.6	82.1	41.2	35.4	51.3
1998	57.9	57.6	64.3	0.5	0.6	1.0	26.2	22.6	29.9	52.7	52.2	80.9	39.5	35.6	50.3
1999	57.8	57.8	64.4	1.0	0.7	0.9	24.5	21.2	28.2	46.7	52.2	79.1	35.7	34.7	48.8
2000	57.9	57.0	65.9	0.8	0.7	0.9	24.1	19.5	26.9	51.3	54.0	78.1	36.3	33.9	47.7
2001	56.7	56.5	65.3	0.6	0.6	0.8	24.4	17.3	24.7	59.7	51.5	76.1	40.3	31.4	45.3
2002	57.2	56.3	64.8	0.5	0.6	0.7	22.8	16.4	23.2	51.7	48.1	72.8	35.8	29.4	43.0
2003	56.3	57.8	66.1	0.6	0.6	0.6	20.5	16.6	22.4	49.6	46.9	70.7	33.6	28.9	41.6
2004	55.6	57.4	66.3	0.7	0.5	0.7	16.4	15.7	22.1	50.2	46.1	70.0	31.6	28.2	41.1
2005	55.4	58.0	---	0.7	0.6	---	19.8	15.4	---	50.2	46.5	---	33.4	28.2	---

**Notes:**

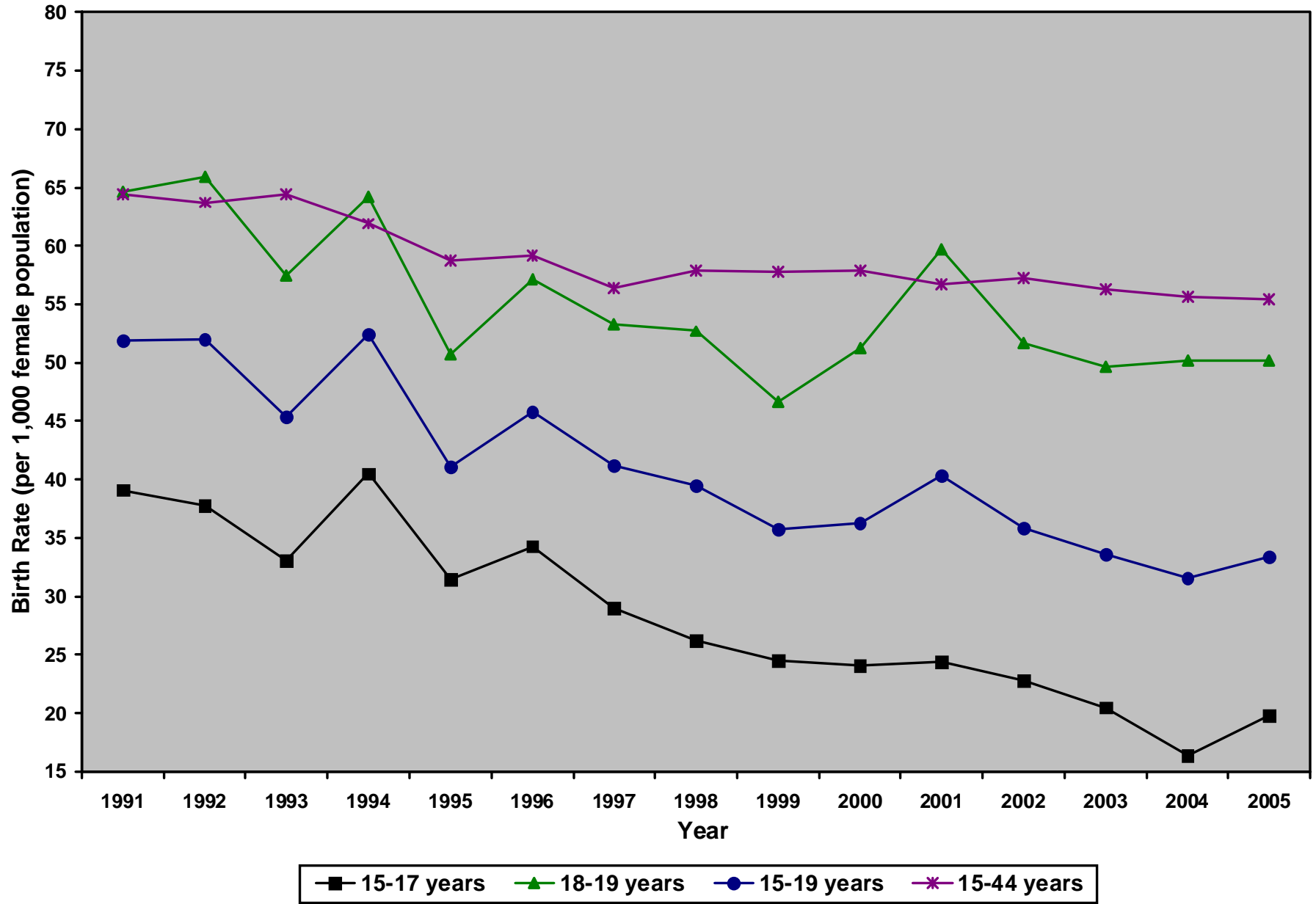
Birth rates are per 1,000 female population for each specified age group.

United States data for 2005 is currently not available.

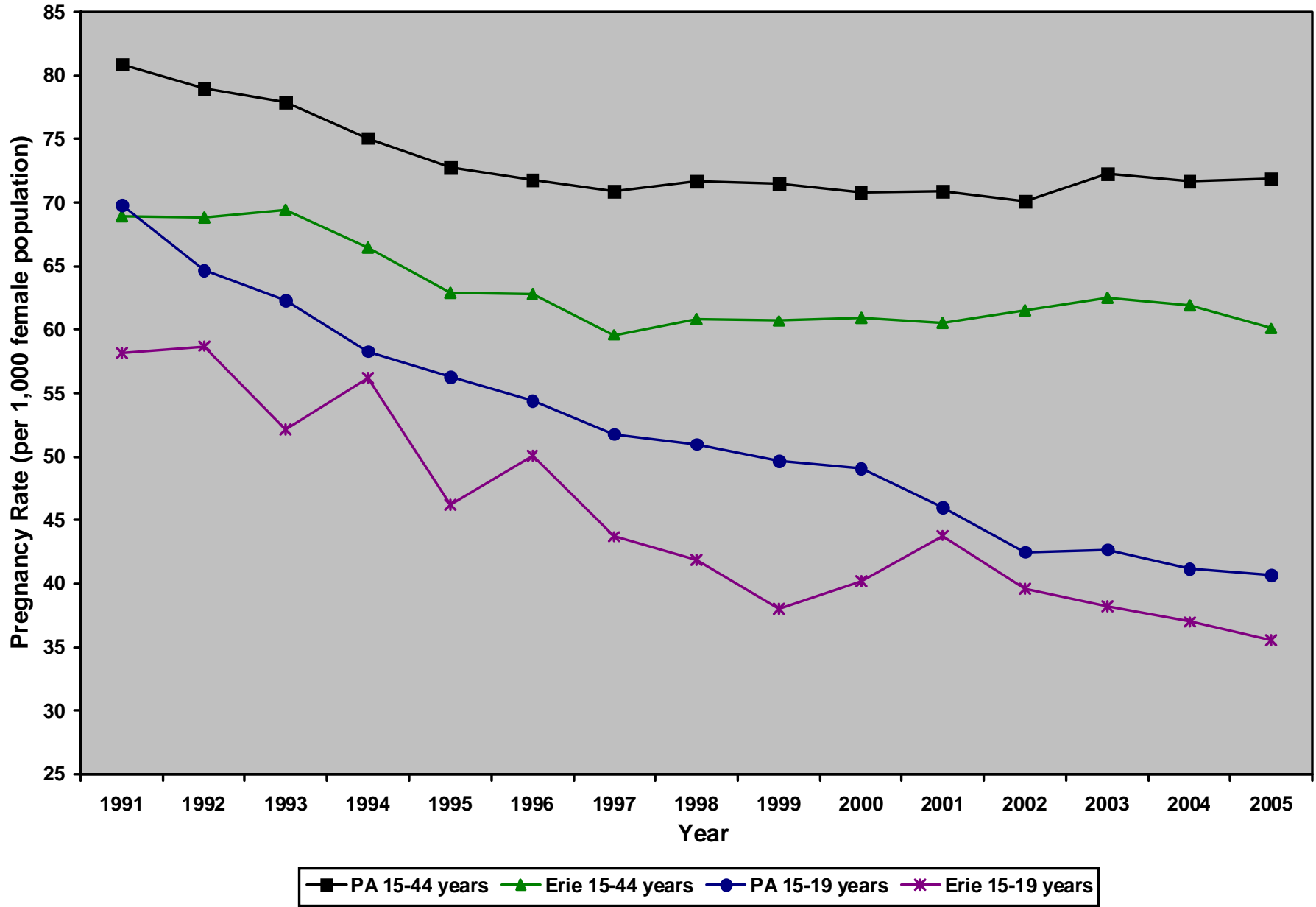
### Erie County Reported Pregnancy Rates by Age of Mother, 1991-2005



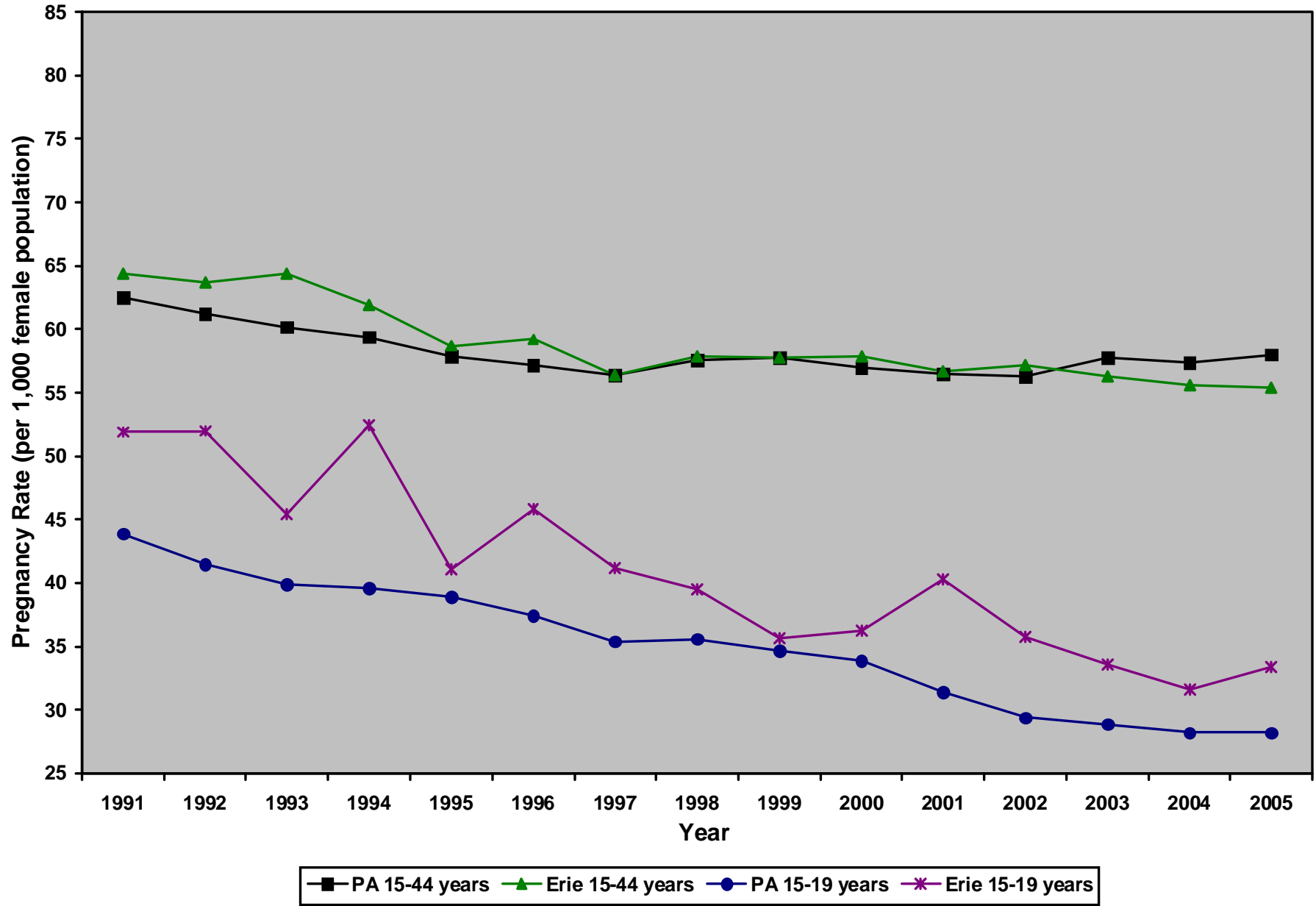
Erie County Birth Rates by Age of Mother, 1991-2005



Erie County and PA Reported Pregnancy Rates by Age of Mother, 1991-2005



### Erie County and PA Live Birth Rates by Age of Mother, 1991-2005



DATA SECTION THREE

Percent of Erie County Total Reported Pregnancies and Live Births by Age of Mother, 1991-2005

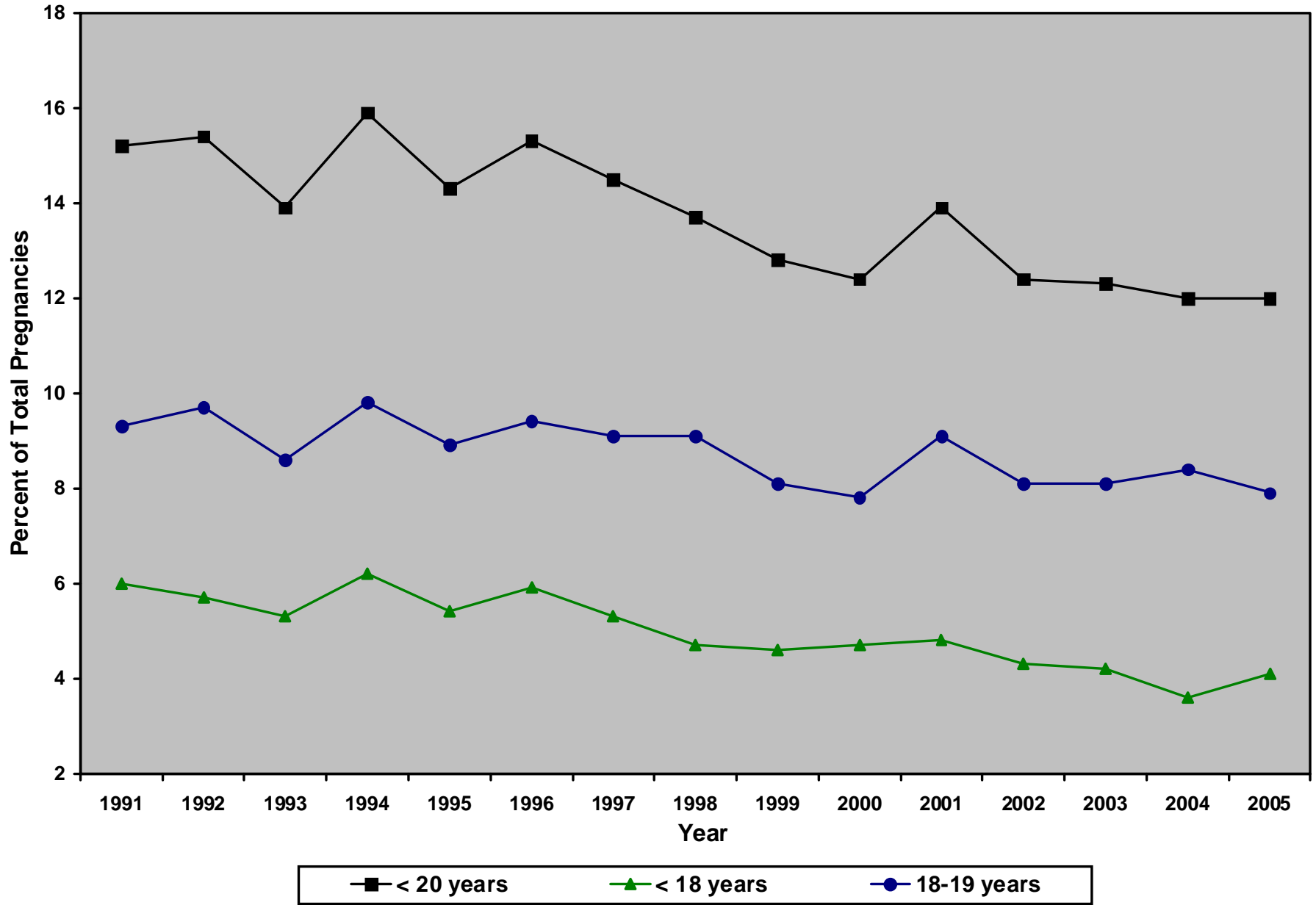
**Percent of Erie County Total Reported Pregnancies and Live Births by Age of Mother, 1991-2005**

Year	<u>&lt; 20</u>		<u>&lt; 18</u>		<u>18-19</u>	
	<u>% of Pregnancies</u>	<u>% of Births</u>	<u>% of Pregnancies</u>	<u>% of Births</u>	<u>% of Pregnancies</u>	<u>% of Births</u>
1991	15.2	14.6	6.0	5.7	9.3	8.9
1992	15.4	14.7	5.7	5.5	9.7	9.2
1993	13.9	13.1	5.3	5.0	8.6	8.1
1994	15.9	15.7	6.2	6.3	9.8	9.4
1995	14.3	13.6	5.4	5.4	8.9	8.2
1996	15.3	14.7	5.9	5.7	9.4	9.0
1997	14.5	14.4	5.3	5.3	9.1	9.2
1998	13.7	13.6	4.7	4.6	9.1	9.0
1999	12.8	12.6	4.6	4.5	8.1	8.1
2000	12.4	11.8	4.7	4.4	7.8	7.3
2001	13.9	13.5	4.8	4.6	9.1	8.9
2002	12.4	12.1	4.3	4.3	8.1	7.7
2003	12.3	12.0	4.2	4.2	8.1	7.8
2004	12.0	11.3	3.6	3.4	8.4	7.9
2005	12.0	12.1	4.1	4.1	7.9	8.0

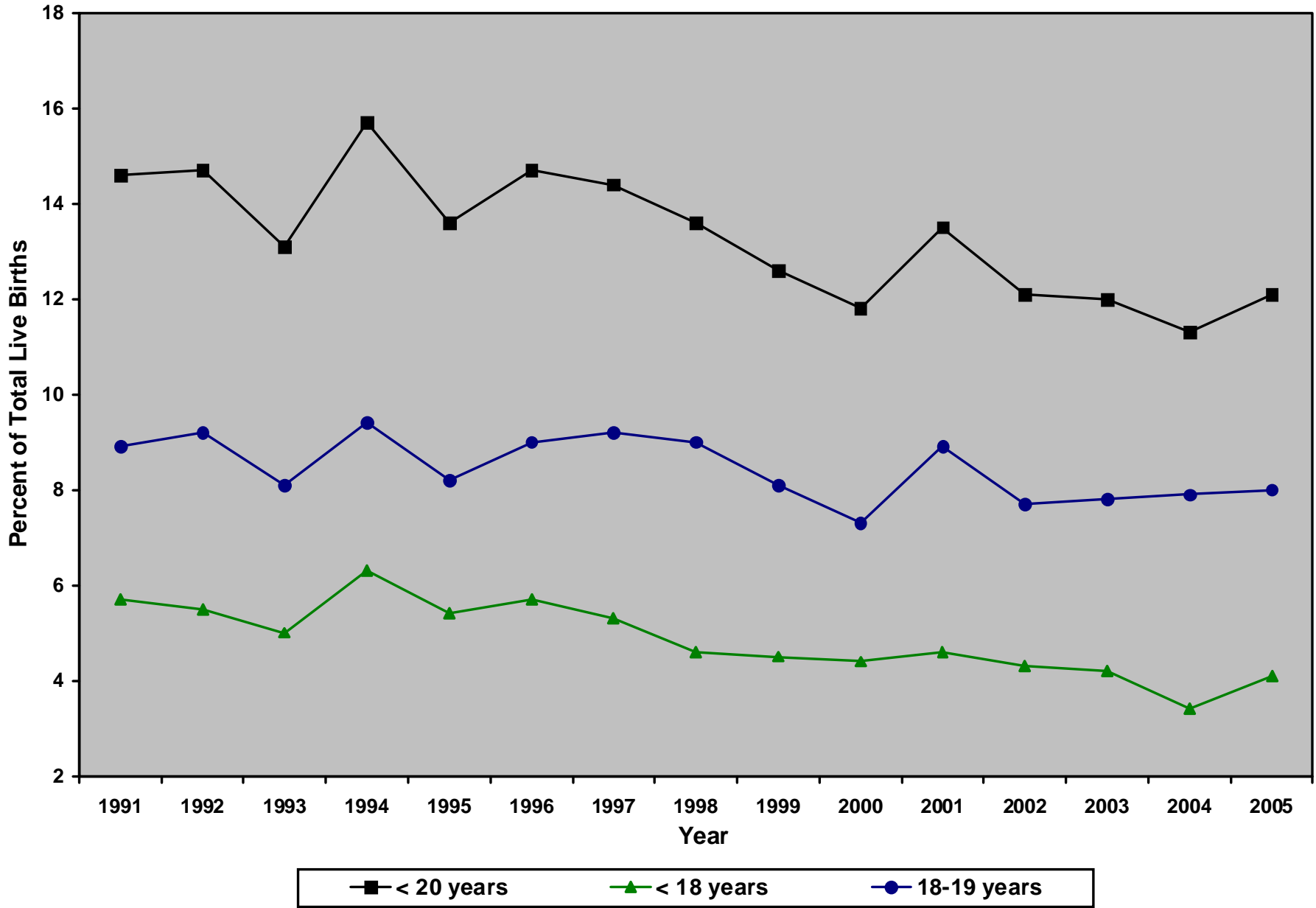
Note:  
Erie County reported pregnancies include only fetal deaths  $\geq$  16 weeks gestation and only in-state induced abortion procedures.



Percent of Erie County Total Reported Pregnancies by Age of Mother, 1991-2005



Percent of Erie County Total Live Births by Age of Mother, 1991-2005



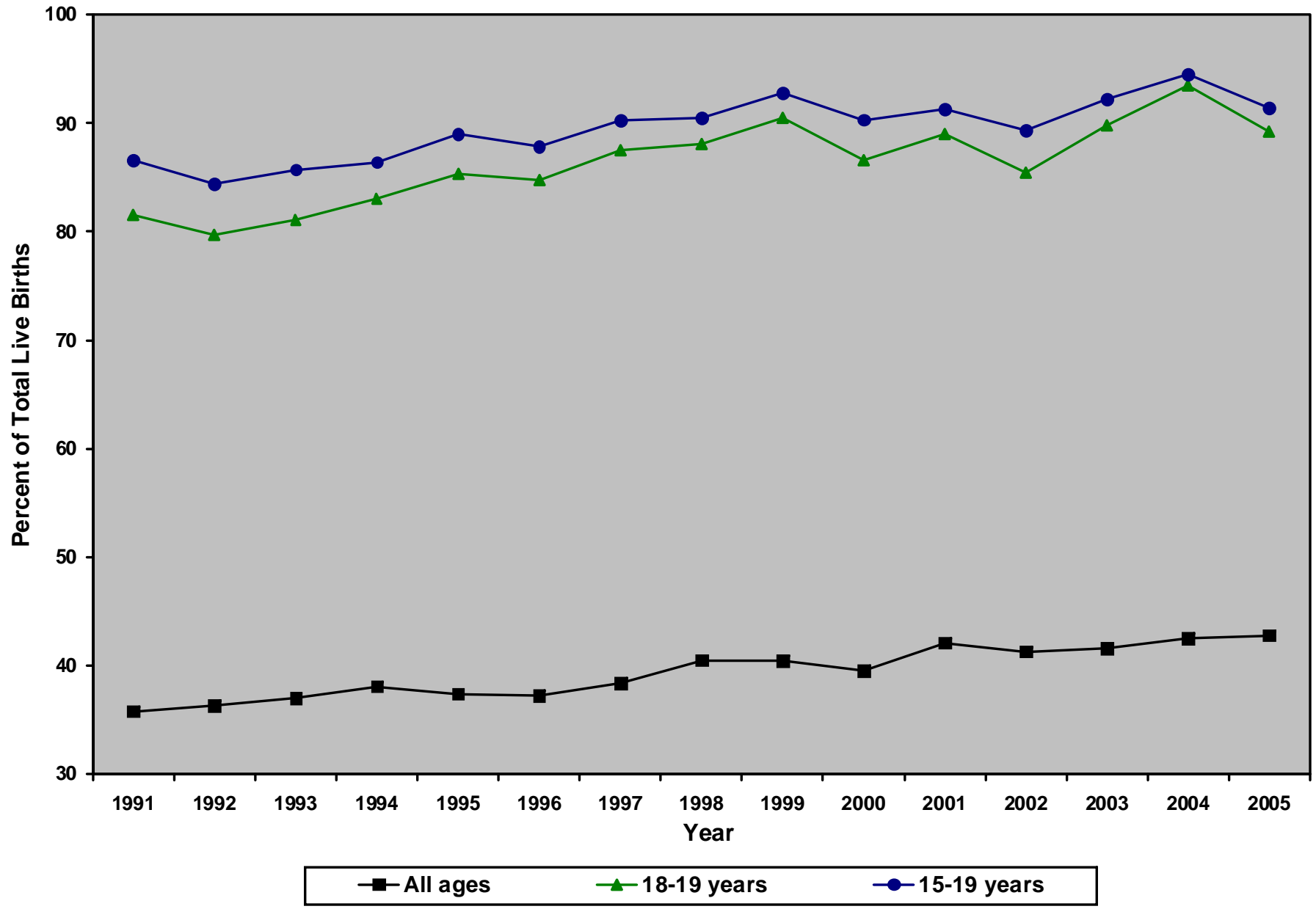
DATA SECTION FOUR

Percent Unmarried by Age of Mother for Erie County and Pennsylvania Total Live Births, 1991-2005

**Percent Unmarried by Age of Mother for Erie County and Pennsylvania Total Live Births, 1991-2005**

<u>Year</u>	<u>All Ages</u>		<u>15-17</u>		<u>18-19</u>		<u>15-19</u>	
	<u>Erie</u>	<u>PA</u>	<u>Erie</u>	<u>PA</u>	<u>Erie</u>	<u>PA</u>	<u>Erie</u>	<u>PA</u>
1991	35.8	30.6	95.0	92.3	81.5	77.6	86.6	82.8
1992	36.3	31.7	92.5	93.3	79.7	80.2	84.4	85.1
1993	37.0	32.4	93.7	94.1	81.1	82.5	85.7	86.9
1994	38.1	33.0	91.8	94.7	83.0	83.8	86.4	88.0
1995	37.4	32.6	95.1	94.6	85.3	85.0	89.0	88.7
1996	37.2	32.5	92.9	95.0	84.8	85.2	87.8	89.0
1997	38.4	32.9	95.3	95.7	87.5	87.0	90.2	90.1
1998	40.5	32.9	95.5	95.4	88.1	86.0	90.5	89.4
1999	40.4	33.0	97.3	95.5	90.5	86.8	92.8	89.8
2000	39.5	32.8	96.6	95.8	86.6	86.6	90.3	89.7
2001	42.1	33.9	96.0	96.3	89.0	86.6	91.3	89.7
2002	41.3	33.5	96.5	95.9	85.4	87.5	89.3	90.3
2003	41.6	33.9	96.9	95.8	89.8	88.1	92.2	90.7
2004	42.5	35.2	97.1	96.4	93.5	89.0	94.5	91.5
2005	42.8	36.5	96.0	96.6	89.2	89.7	91.4	91.9

Percent Unmarried by Age of Mother for Erie County Total Live Births, 1991-2005



DATA SECTION FIVE

Erie County Births and Birth Rates by Age of Mother and Race/Ethnicity, 2003-2005 &  
Selected Characteristics of Erie County Total Live Births and Total Teenage Births (15-19 years), 2003-2005

***Erie County Births and Birth Rates by Age of Mother and Race/Ethnicity, 2003-2005***

<u>Race</u>	<u>15-44</u>		<u>15-17</u>		<u>18-19</u>		<u>15-19</u>	
	<u>Births</u>	<u>Rate</u>	<u>Births</u>	<u>Rate</u>	<u>Births</u>	<u>Rate</u>	<u>Births</u>	<u>Rate</u>
All Races	9,802	54.5	360	19.8	777	52.3	1,137	34.4
White	8,149	50.0	223	13.8	569	42.5	792	26.8
Black	1,045	92.6	100	72.5	137	145.4	237	102.1
Hispanic	474	115.9	50	109.6	67	183.1	117	142.3

Notes:

Birth rates are per 1,000 female population for each specified age group.  
Hispanic ethnicity can be of any race.

***Selected Characteristics of Erie County Total Live Births and Total Teenage Births (15-19 years), 2003-2005***

<u>Characteristic</u>	<u>% of Erie County Total Live Births</u>	<u>% of Erie County Teenage Births (15-19)</u>
Mother unmarried	42.3	92.7
Father not identified on birth certificate	7.9	19.1
Mother - White race	83.1	69.7
Mother - Black race	10.7	20.8
Mother - Hispanic (of any race)	4.8	10.3
Mother less than high school graduate	16.1	59.5
Infant with low birth weight (< 2,500 grams)	8.1	9.0
Mother with prenatal care in first trimester	84.9	75.2
Non-smoking mother during pregnancy	72.6	61.3
Infant breastfed in early postpartum period	60.5	46.5
Mother received WIC food during pregnancy	44.2	75.2
Mother with Medicaid as principal source of payment	24.2	37.6
Mother with history of at least one previous live birth	62.7	20.5



DATA SECTION SIX

Erie County's Leading Municipalities for Teenage Births with Respective Birth Rates (15-19 years), 2003-2005 &

Erie County Municipality Teenage Births and Birthrates (15-19 years), 2003-2005

***Erie County's Leading Municipalities for Teenage Births with Respective Birth Rates (15-19 years), 2003-2005***

<u>Minor Civil Division (MCD)</u>	<u>Total Births</u>	<u>15-19 Births</u>	<u>% of Total Births</u>	<u>Birth Rate (15-19)</u>	<u>% of County Births</u>	<u>% of County 15-19 Births</u>
All of Erie County	9,802	1,137	11.6	34.4	100.0	100.0
1. City of Erie	4,528	679	15.0	59.5	46.2	59.7
2. Millcreek Township	1,533	82	5.3	16.0	15.6	7.2
3. City of Corry	295	41	13.9	54.2	3.0	3.6
4. Union City Borough	185	40	21.6	96.6	1.9	3.5
5. Harborcreek Township	372	29	7.8	15.3	3.8	2.6
6. North East Borough	194	26	13.4	41.7	2.0	2.3
7. North East Township	176	20	11.4	12.3	1.8	1.8

**Notes:**

Birth rate (15-19) denotes 2003-2005 average annual birth rates per 1,000 female population aged 15-19 years. Rates were calculated with municipality population counts from 2000 census data.

***Erie County Municipality Teenage Births and Birth Rates (15-19 years), 2003-2005***

<u>Minor Civil Division (MCD)</u>	<u>Total Births</u>	<u>15-19 Births</u>	<u>% of Total Births</u>	<u>Birth Rate (15-19)</u>	<u>% of County Births</u>	<u>% of County 15-19 Births</u>
All of Erie County	9,802	1,137	11.6	34.4	100.0	100.0
Albion Borough	49	7	14.3	43.2	0.5	0.6
Amity Township	26	5	19.2	34.7	0.3	0.4
Concord Township	42	6	14.3	42.6	0.4	0.5
Conneaut Township	70	11	15.7	48.2	0.7	1.0
City of Corry	295	41	13.9	54.2	3.0	3.6
Cranesville Borough	27	4	14.8	63.5	0.3	0.4
Edinboro Borough	105	4	3.8	5.3	1.1	0.4
Elgin Borough	8	2	25.0	133.1	0.1	0.2
Elk Creek Township	53	5	9.4	25.6	0.5	0.4
City of Erie	4,528	679	15.0	59.5	46.2	59.7
Fairview Township	232	8	3.4	8.2	2.4	0.7

Notes:

Birth rate (15-19) denotes 2003-2005 average annual birth rates per 1,000 female population aged 15-19 years. Rates were calculated with municipality population counts from 2000 census data.

***Erie County Municipality Teenage Births and Birthrates (15-19 years), 2003-2005***

<u>Minor Civil Division (MCD)</u>	<u>Total Births</u>	<u>15-19 Births</u>	<u>% of Total Births</u>	<u>Birth Rate (15-19)</u>	<u>% of County Births</u>	<u>% of County 15-19 Births</u>
Franklin Township	40	1	2.5	4.9	0.4	0.1
Girard Borough	111	4	3.6	10.8	1.1	0.4
Girard Township	149	15	10.1	31.4	1.5	1.3
Greene Township	125	9	7.2	16.8	1.4	0.8
Greenfield Township	48	2	4.2	9.1	0.5	0.2
Harborcreek Township	372	29	7.8	15.3	3.8	2.6
Lake City Borough	122	11	9.0	34.5	1.2	1.0
Lawrence Park Township	142	14	9.9	28.6	1.4	1.2
Leboeuf Township	66	5	7.8	23.5	0.7	0.4
McKean Borough	27	5	18.5	128.2	0.3	0.4
McKean Township	114	15	13.2	26.6	1.2	1.3
Millcreek Township	1,533	82	5.3	16.0	15.6	7.2

Notes:

Birth rate (15-19) denotes 2003-2005 average annual birth rates per 1,000 female population aged 15-19 years. Rates were calculated with municipality population counts from 2000 census data.

***Erie County Municipality Teenage Births and Birthrates (15-19 years), 2003-2005***

<u>Minor Civil Division (MCD)</u>	<u>Total Births</u>	<u>15-19 Births</u>	<u>% of Total Births</u>	<u>Birth Rate (15-19)</u>	<u>% of County Births</u>	<u>% of County 15-19 Births</u>
Mill Village Borough	16	1	6.3	20.8	0.2	0.1
North East Borough	194	26	13.4	41.7	2.0	2.3
North East Township	176	20	11.4	12.3	1.8	1.8
Platea Borough	18	1	5.6	19.6	0.2	0.1
Springfield Township	114	17	14.9	48.9	1.2	1.5
Summit Township	171	11	6.4	22.2	1.7	1.0
Union Township	46	3	6.5	16.4	0.5	0.3
Union City Borough	185	40	21.6	96.6	1.9	3.5
Venango Township	80	7	8.8	21.0	0.8	0.6
Washington Township	110	7	6.4	12.8	1.1	0.6
Waterford Borough	79	3	3.8	13.9	0.8	0.3
Waterford Township	105	10	9.5	27.1	1.1	0.9

Notes:

Birth rate (15-19) denotes 2003-2005 average annual birth rates per 1,000 female population aged 15-19 years. Rates were calculated with municipality population counts from 2000 census data.

***Erie County Municipality Teenage Births and Birth Rates (15-19 years), 2003-2005***

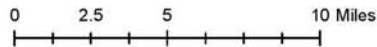
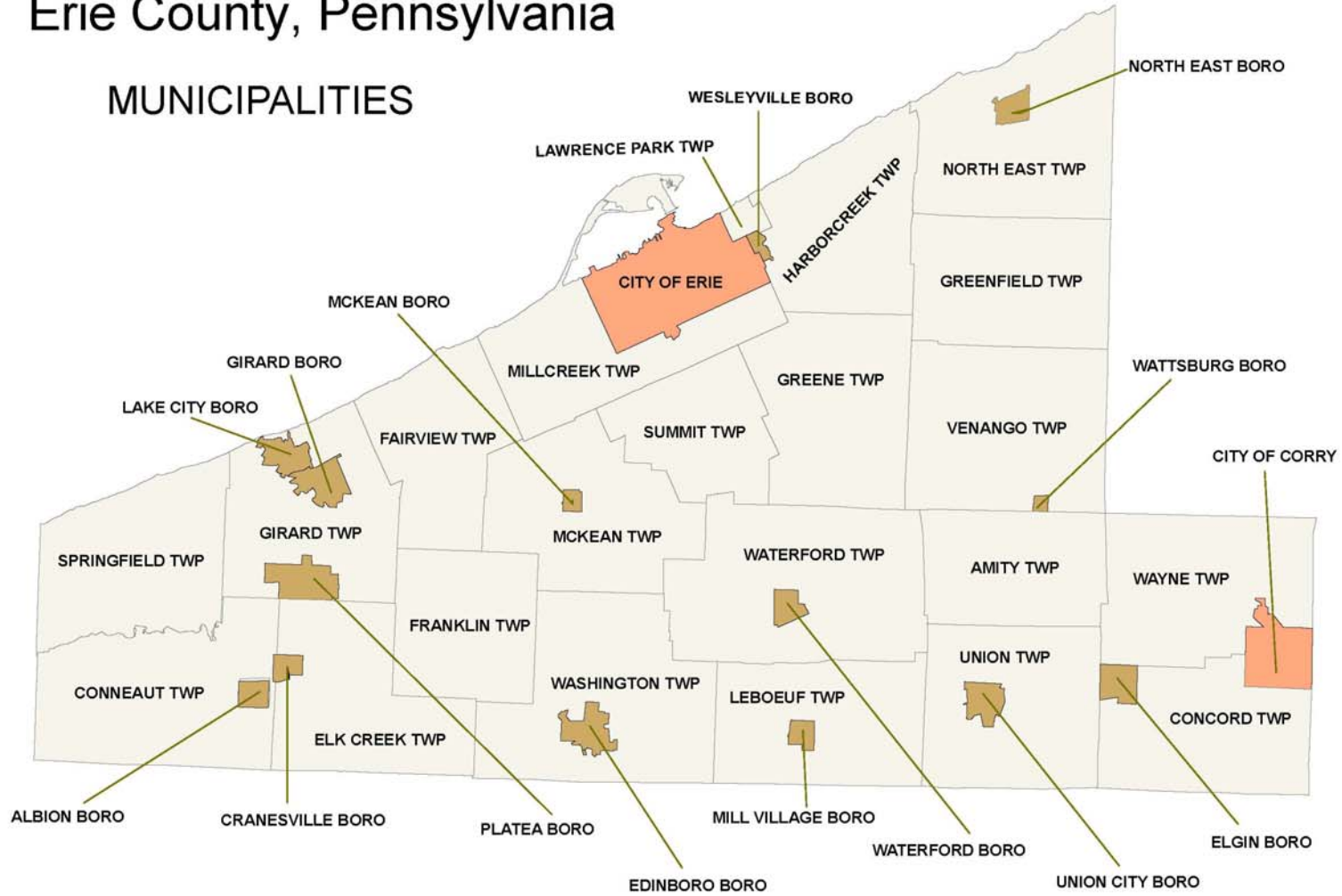
<u>Minor Civil Division (MCD)</u>	<u>Total Births</u>	<u>15-19 Births</u>	<u>% of Total Births</u>	<u>Birth Rate (15-19)</u>	<u>% of County Births</u>	<u>% of County 15-19 Births</u>
Wattsburg Borough	24	3	12.5	76.9	0.2	0.3
Wayne Township	57	7	12.3	35.4	0.6	0.6
Wesleyville Borough	134	17	12.7	42.3	1.4	1.5

Notes:

Birth rate (15-19) denotes 2003-2005 average annual birth rates per 1,000 female population aged 15-19 years. Rates were calculated with municipality population counts from 2000 census data.

# Erie County, Pennsylvania

## MUNICIPALITIES



Valerie Bukowski/ECDH

DATA SECTION SEVEN

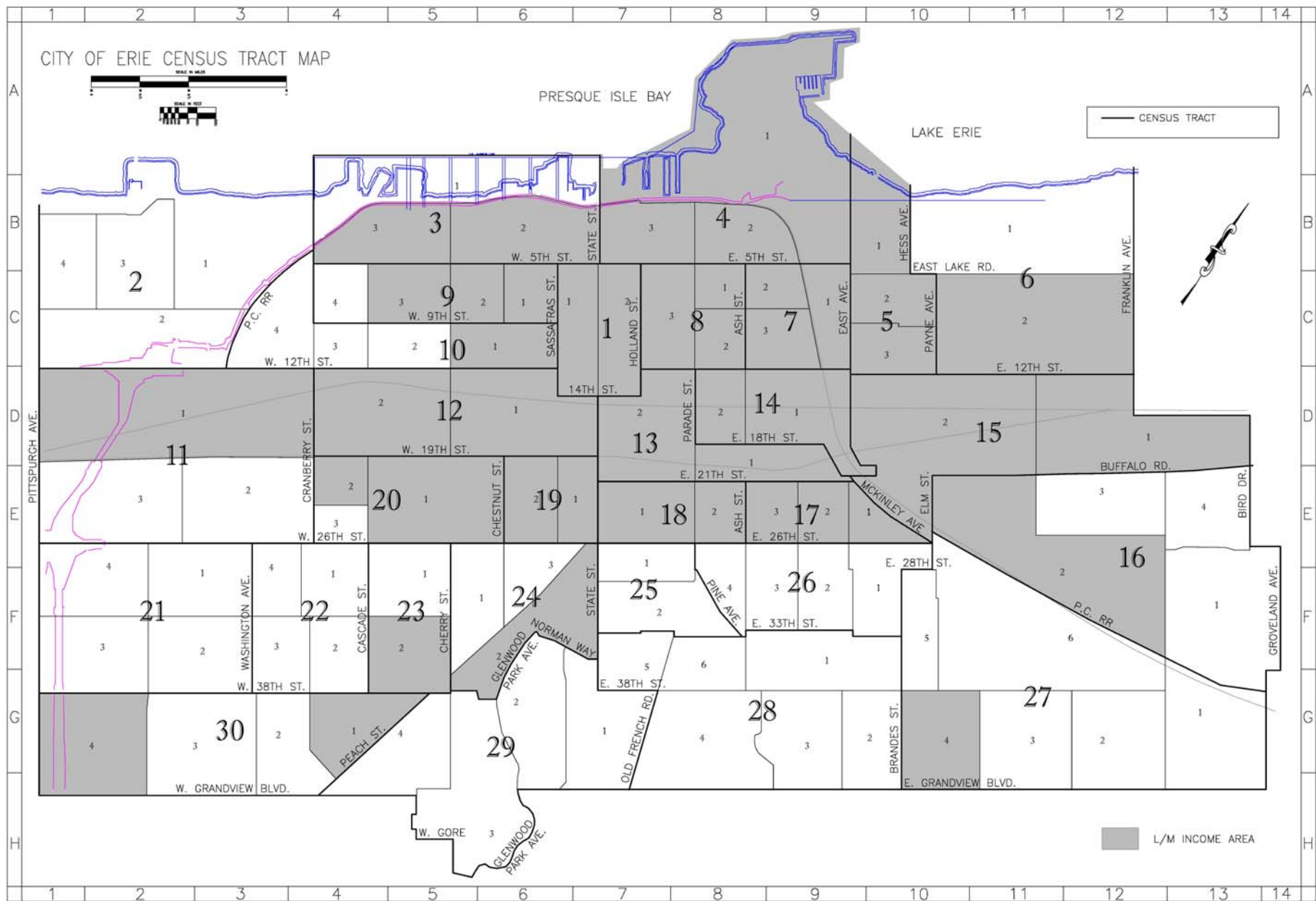
City of Erie Teenage Births and Birth Rates (15-19 years) by Census Tract, 2003-2005



**City of Erie Teenage Births and Birth Rates (15-19 years) by Census Tract, 2003-2005**

<u>Census Tract</u>	<u>15-19 Births</u>	<u>Birth Rate (15-19)</u>	<u>Census Tract</u>	<u>15-19 Births</u>	<u>Birth Rate (15-19)</u>
1	2	1.9	16	14	31.1
2	2	5.7	17	28	81.9
3	25	68.3	18	28	86.4
4	15	70.4	19	8	52.3
5	24	87.9	20	25	77.2
6	26	89.3	21	7	31.1
7	66	163.0	22	15	52.6
8	62	144.5	23	12	51.9
9	28	45.5	24	19	80.2
10	21	62.5	25	13	49.2
11	9	32.3	26	26	62.4
12	24	58.8	27	24	40.4
13	25	61.3	28	3	2.1
14	14	97.2	29	1	5.2
15	30	75.8	30	13	40.9

Notes:  
 Birth rate (15-19) denotes 2003-2005 average annual birth rates per 1,000 female population aged 15-19 years.  
 Rates were calculated with census tract population counts from 2000 census data; 609 out of the 697 Erie births could be mapped to a census tract.



Note:  
L/M Income Area denotes low or moderate income area based on 2000 census data.