

# Erie County Birth Statistics, 1990-2006

---

Epidemiology

ERIE COUNTY DEPARTMENT OF HEALTH  
Public Health Preparedness Division



**ERIE COUNTY  
DEPARTMENT OF HEALTH**

Mark A. DiVecchio, County Executive  
Andrew J. Glass, M. S., FACHE, Director



PUBLIC HEALTH  
PREPAREDNESS  
DIVISION

*Erie County Birth Statistics, 1990-2006*

Jeff Quirk, PhD  
Epidemiologist

September, 2008

Erie County Department of Health  
606 West Second Street  
Erie, PA 16507  
Tel: (814) 451-6700  
Fax: (814) 451-6767  
Website: <http://www.ecdh.org>

*“Our mission is to preserve, promote, and protect  
the health, safety and well-being of the people and the environment in Erie County.”*

TABLE OF CONTENTS

Introduction ..... 4

Data Section One: Erie County Municipality Birth Rates and Births by Age of Mother, 2006 ..... 6

Data Section Two: Live Birth and General Fertility Rates, 1990-2006 ..... 12

Data Section Three: Births to Mothers Under 18 and Between 15-19 Years of Age, 1990-2006 ..... 17

Data Section Four: Births to Unmarried Mothers, 1990-2006 ..... 23

Data Section Five: Prenatal Care During the First Trimester of Pregnancy, 1990-2006 ..... 27

Data Section Six: Smoking During Pregnancy, 1990-2006 ..... 31

Data Section Seven: Infants Born at Low and Very Low Birth Weight, 1990-2006 ..... 35

Data Section Eight: Infant and Neonatal Deaths, 1990-2006 ..... 41

## INTRODUCTION

This report is an update and expansion of the previously published *Mother and Child: Erie County Maternal and Child Health Study* (January, 2007). Detailed maternal and infant health statistics for Erie County and Pennsylvania residents for the seventeen-year period January 1, 1990 - December 31, 2006 are presented, with a particular emphasis on the most recent four years of reporting (2003-2006).

Data are presented for the following topics:

Erie County Municipality Birth Rates and Births by Age of Mother (2006 only)

Live Birth and General Fertility Rates

Births to Mothers Under 18 and Between 15-19 Years of Age

Births to Unmarried Mothers

Prenatal Care During the First Trimester of Pregnancy

Smoking During Pregnancy

Infants Born at Low and Very Low Birth Weight

Infant and Neonatal Deaths

The tables and figures are intended to be largely self-explanatory and, hopefully, are presented in a format that permits readers to access readily the information most relevant to their particular needs.

Data and information provided in this report were obtained from the following sources: (1) the Vital Statistics Databases of the Erie County Department of Health ([www.ecdh.org](http://www.ecdh.org)), (2) the Bureau of Health Statistics and Research, Pennsylvania Department of Health ([www.dsf.health.state.pa.us](http://www.dsf.health.state.pa.us)), (3) the Pennsylvania State Data Center ([www.pasdc.hbg.psu.edu](http://www.pasdc.hbg.psu.edu)), and (4) the U.S. Census Bureau ([www.census.gov](http://www.census.gov)). State and federal agencies specifically disclaim responsibility for any of the analyses, interpretations, or conclusions that appear in this report.

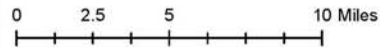
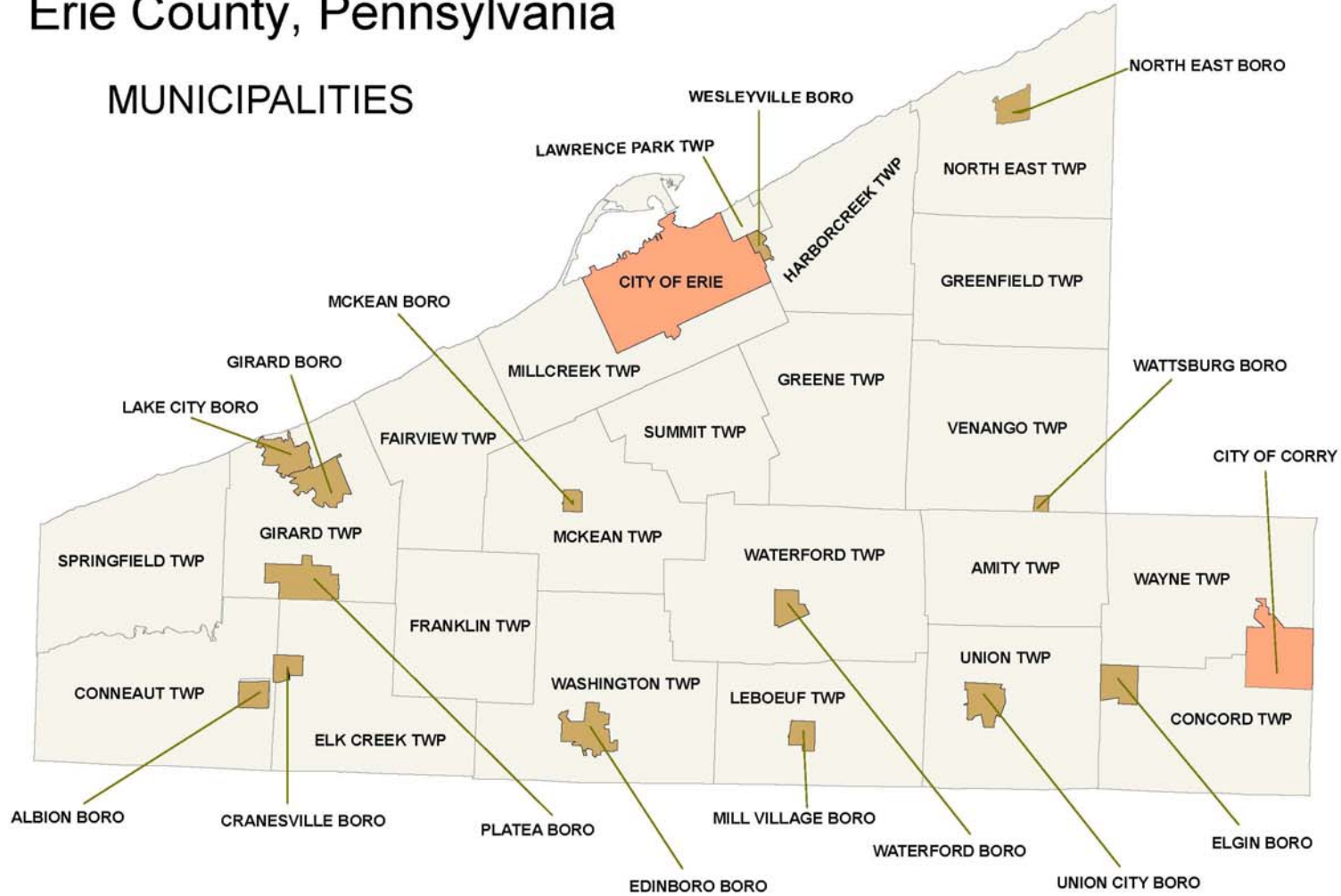
Intercensal year population estimates were used for the computation of rates and percentages for the years 1991-1999 and 2001-2005. These estimates were produced jointly by the U.S. Census Bureau and the State Data Center of the Pennsylvania State University at Harrisburg under the Federal-State Cooperative Program for Local Population Estimates. Enumerated population figures from the 1990 and 2000 censuses were used to compute rates and percentages for the years 1990 and 2000, respectively.

DATA SECTION ONE

Erie County Municipality Birth Rates and Births by Age of Mother, 2006

# Erie County, Pennsylvania

## MUNICIPALITIES



Valerie Bukowski/ECDH

***Erie County Municipality Birth Rates and Births by Age of Mother, 2006***

<u>Municipality</u>	<u>Population</u>	<u>Births</u>	<u>Rate</u>	<u>&lt;15</u>	<u>15-17</u>	<u>18-19</u>	<u>20-24</u>	<u>25-29</u>	<u>30-34</u>	<u>35-39</u>	<u>40-44</u>	<u>45+</u>	<u>Unknown Age</u>
All of Erie County	279,811	3,441	12.3	8	130	260	939	964	732	330	69	6	3
Albion Borough	1,548	21	13.6	0	3	2	6	5	5	0	0	0	0
Amity Township	1,156	8	6.9	0	0	3	4	1	0	0	0	0	0
Concord Township	1,355	18	13.3	0	0	2	7	7	1	1	0	0	0
Conneaut Township	4,072	22	5.4	0	2	0	6	5	5	4	0	0	0
City of Corry	6,496	104	16.0	2	5	13	33	23	21	4	2	0	1
Cranesville Borough	590	9	15.3	0	0	0	0	4	2	2	1	0	0
Edinboro Borough	6,682	26	3.9	0	1	1	3	10	5	6	0	0	0
Elgin Borough	230	2	8.7	0	0	0	1	1	0	0	0	0	0
Elk Creek Township	1,803	17	9.4	0	0	0	3	7	2	5	0	0	0
City of Erie	102,036	1,655	16.2	3	86	159	523	458	279	120	25	1	1

Note: Birth rates are per 1,000 population.



***Erie County Municipality Birth Rates and Births by Age of Mother, 2006***

<u>Municipality</u>	<u>Population</u>	<u>Births</u>	<u>Rate</u>	<u>&lt;15</u>	<u>15-17</u>	<u>18-19</u>	<u>20-24</u>	<u>25-29</u>	<u>30-34</u>	<u>35-39</u>	<u>40-44</u>	<u>45+</u>	<u>Unknown Age</u>
Fairview Township	10,033	82	8.2	0	0	2	13	20	22	17	8	0	0
Franklin Township	1,674	24	14.3	0	0	1	4	8	8	3	0	0	0
Girard Borough	3,011	37	12.3	0	0	2	12	13	7	2	1	0	0
Girard Township	5,257	53	10.1	0	0	3	11	20	10	5	4	0	0
Greene Township	4,785	38	7.9	0	0	1	5	15	12	5	0	0	0
Greenfield Township	1,984	24	12.1	0	1	2	6	4	7	4	0	0	0
Harborcreek Township	17,027	140	8.2	1	4	5	25	41	45	15	4	0	0
Lake City Borough	2,963	46	15.5	0	1	5	9	16	15	0	0	0	0
Lawrence Park Township	3,809	49	12.9	0	1	5	12	14	13	3	1	0	0
Leboeuf Township	1,663	16	9.6	0	1	0	5	4	4	2	0	0	0
McKean Borough	366	7	19.1	0	0	0	1	2	1	2	0	0	1

Note: Birth rates are per 1,000 population.

***Erie County Municipality Birth Rates and Births by Age of Mother, 2006***

<u>Municipality</u>	<u>Population</u>	<u>Births</u>	<u>Rate</u>	<u>&lt; 15</u>	<u>15-17</u>	<u>18-19</u>	<u>20-24</u>	<u>25-29</u>	<u>30-34</u>	<u>35-39</u>	<u>40-44</u>	<u>45+</u>	<u>Unknown Age</u>
McKean Township	4,551	38	8.3	0	2	2	13	10	5	5	1	0	0
Millcreek Township	52,541	520	9.9	0	10	22	101	142	153	78	10	4	0
Mill Village Borough	397	3	7.6	0	0	1	2	0	0	0	0	0	0
North East Borough	4,302	43	10.0	1	2	3	13	14	6	2	2	0	0
North East Township	6,700	65	9.7	0	1	3	12	19	16	8	5	1	0
Platea Borough	453	4	8.8	0	0	0	0	2	1	1	0	0	0
Springfield Township	3,299	36	10.9	0	0	3	13	9	7	3	1	0	0
Summit Township	6,162	56	9.1	0	3	1	9	18	16	8	1	0	0
Union Township	1,649	17	10.3	0	0	1	6	4	4	1	1	0	0
Union City Borough	3,361	61	18.1	1	2	6	26	17	6	3	0	0	0
Venango Township	2,334	22	9.4	0	0	0	3	7	8	4	0	0	0

Note: Birth rates are per 1,000 population.

***Erie County Municipality Birth Rates and Births by Age of Mother, 2006***

<u>Municipality</u>	<u>Population</u>	<u>Births</u>	<u>Rate</u>	<u>&lt;15</u>	<u>15-17</u>	<u>18-19</u>	<u>20-24</u>	<u>25-29</u>	<u>30-34</u>	<u>35-39</u>	<u>40-44</u>	<u>45+</u>	<u>Unknown Age</u>
Washington Township	4,596	44	9.6	0	0	1	10	11	16	5	1	0	0
Waterford Borough	1,458	28	19.2	0	1	4	9	8	5	1	0	0	0
Waterford Township	3,919	36	9.2	0	1	3	12	7	10	3	0	0	0
Wattsburg Borough	355	6	16.9	0	1	0	3	1	1	0	0	0	0
Wayne Township	1,781	17	9.5	0	0	2	4	5	3	3	0	0	0
Wesleyville Borough	3,413	47	13.8	0	2	2	14	12	11	5	1	0	0

Note: Birth rates are per 1,000 population.

DATA SECTION TWO

Live Birth and General Fertility Rates, 1990-2006

# LIVE BIRTHS

Crude birth rates are per 1,000 population and racial/ethnic percentages are reported for each particular community

Year	Community	Total Population				White				Black				Hispanic (of any race)			
		Births	Rate			Births	%			Births	%			Births	%		
2003	City of Erie	1,468	14.1			1,037	70.6			284	19.3			121	8.2		
	Erie County	3,299	11.8			2,804	85.0			299	9.1			150	4.5		
	PA	145,485	11.8			112,433	77.3			19,895	13.7			10,782	7.4		
2004	City of Erie	1,527	14.7			1,046	68.5			331	21.7			127	8.3		
	Erie County	3,280	11.6			2,730	83.2			349	10.6			164	5.0		
	PA	144,194	11.6			108,896	75.6			19,943	13.8			11,527	8.0		
2005	City of Erie	1,533	14.9			1,012	66.0			371	24.2			122	8.0		
	Erie County	3,223	11.5			2,615	81.1			397	12.3			160	5.0		
	PA	145,033	11.7			108,795	75.0			20,402	14.1			12,145	8.4		
2006	City of Erie	1,655	16.2			1,096	66.2			395	23.9			137	8.3		
	Erie County	3,441	12.3			2,810	81.7			415	12.1			166	4.8		
	PA	148,706	12.0			109,749	73.8			21,535	14.5			13,212	8.9		
2004-2006	City of Erie	4,715	15.4			3,154	66.9			1,097	23.3			386	8.2		
	Erie County	9,944	11.8			8,155	82.0			1,161	11.7			490	4.9		
	PA	437,933	11.7			327,530	74.8			61,880	14.1			36,884	8.4		

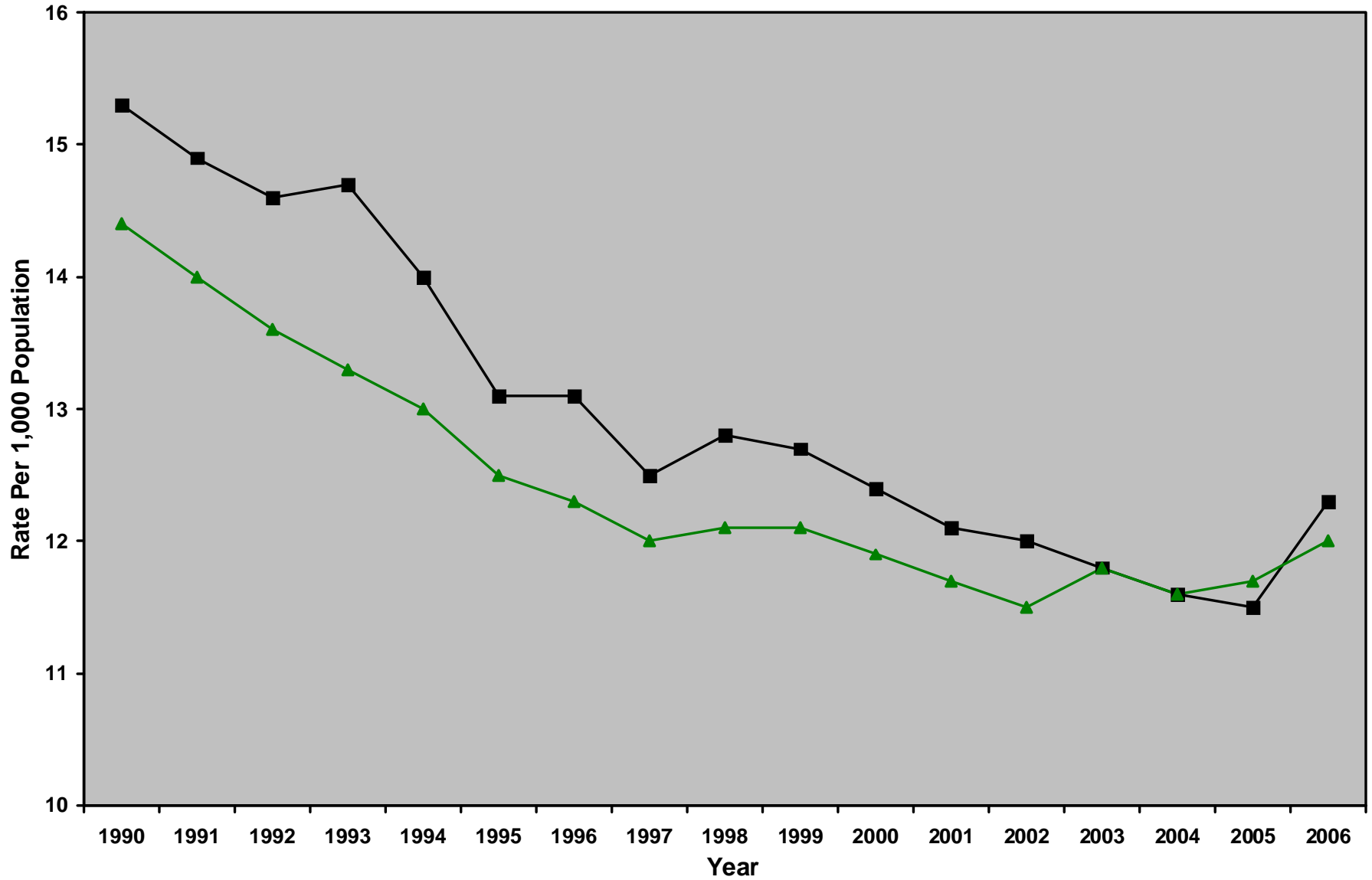
Sources: Division of Public Health Preparedness, Erie County Department of Health; Bureau of Health Statistics and Research, PA Department of Health



## ***Erie County and Pennsylvania Live Birth and General Fertility Rates, 1990-2006***

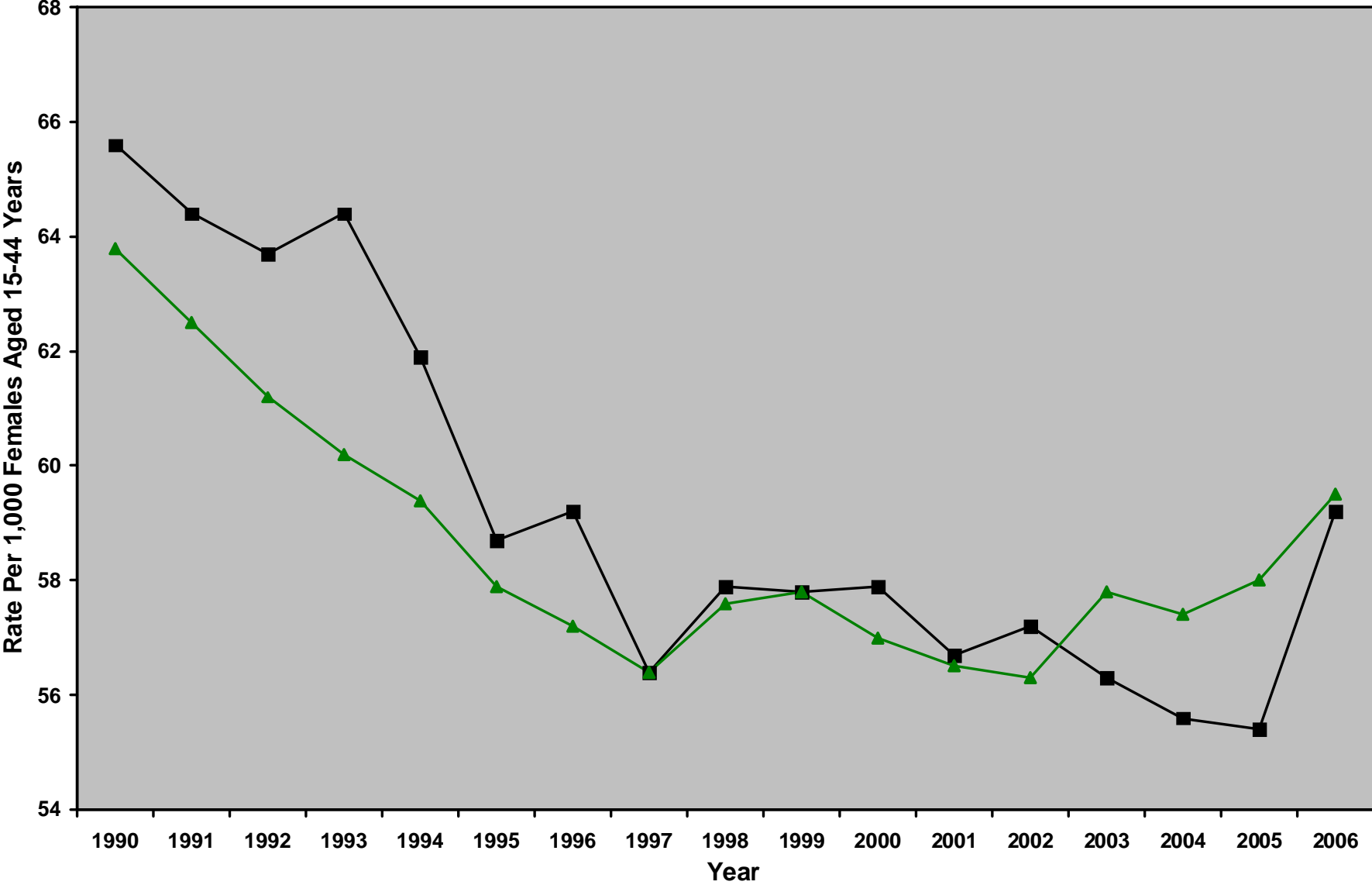
<u>Year</u>	<u>Erie Births</u>	<u>Birth Rate Per 1,000 Population</u>		<u>Fertility Rate Per 1,000 Females Aged 15-44 Years</u>	
		<u>Erie</u>	<u>PA</u>	<u>Erie</u>	<u>PA</u>
1990	4,211	15.3	14.4	65.6	63.8
1991	4,138	14.9	14.0	64.4	62.5
1992	4,091	14.6	13.6	63.7	61.2
1993	4,111	14.7	13.3	64.4	60.2
1994	3,929	14.0	13.0	61.9	59.4
1995	3,676	13.1	12.5	58.7	57.9
1996	3,674	13.1	12.3	59.2	57.2
1997	3,484	12.5	12.0	56.4	56.4
1998	3,541	12.8	12.1	57.9	57.6
1999	3,519	12.7	12.1	57.8	57.8
2000	3,471	12.4	11.9	57.9	57.0
2001	3,369	12.1	11.7	56.7	56.5
2002	3,372	12.0	11.5	57.2	56.3
2003	3,299	11.8	11.8	56.3	57.8
2004	3,280	11.6	11.6	55.6	57.4
2005	3,223	11.5	11.7	55.4	58.0
2006	3,441	12.3	12.0	59.2	59.5

Erie County and Pennsylvania Live Birth Rates, 1990-2006



■ Erie County      ▲ Pennsylvania

Erie County and Pennsylvania General Fertility Rates, 1990-2006



■ Erie County      ▲ Pennsylvania



DATA SECTION THREE

Births to Mothers Under 18 and Between 15-19 Years of Age, 1990-2006

# BIRTHS TO MOTHERS UNDER 18 YEARS OF AGE

*Unknowns (Unkn) excluded in calculations of percentages of total live births for each specified category*

Year	Community	Total Population				White				Black				Hispanic (of any race)			
		Births	Count	Unkn	%	Births	Count	Unkn	%	Births	Count	Unkn	%	Births	Count	Unkn	%
2003	City of Erie	1,468	86	2	5.9	1,037	42	1	4.1	284	31	1	10.9	121	15	0	12.4
	Erie County	3,299	137	3	4.2	2,804	89	2	3.2	299	33	1	11.1	150	17	0	11.3
	PA	145,485	4,610	241	3.2	112,433	2,238	144	2.0	19,895	1,671	34	8.4	10,782	883	19	8.2
2004	City of Erie	1,527	69	0	4.5	1,046	30	0	2.9	331	29	0	8.8	127	10	0	7.9
	Erie County	3,280	111	0	3.4	2,730	69	0	2.5	349	30	0	8.6	164	14	0	8.5
	PA	144,194	4,395	250	3.1	108,896	1,995	118	1.8	19,943	1,643	57	8.3	11,527	844	23	7.3
2005	City of Erie	1,533	89	0	5.8	1,012	40	0	4.0	371	40	0	10.8	122	17	0	13.9
	Erie County	3,223	132	1	4.1	2,615	75	1	2.9	397	44	0	11.1	160	21	0	13.1
	PA	145,033	4,395	162	3.0	108,795	1,970	86	1.8	20,402	1,649	45	8.1	12,145	878	14	7.2
2006	City of Erie	1,655	89	1	5.4	1,096	41	0	3.7	395	40	0	10.1	137	11	0	8.0
	Erie County	3,441	138	3	4.0	2,810	82	1	2.9	415	44	0	10.6	166	14	0	8.4
	PA	148,706	4,520	180	3.0	109,749	1,935	103	1.8	21,535	1,711	47	8.0	13,212	948	10	7.2
2004-2006	City of Erie	4,715	247	1	5.2	3,154	111	0	3.5	1,097	109	0	9.9	386	38	0	9.8
	Erie County	9,944	381	4	3.8	8,155	226	2	2.8	1,161	118	0	10.2	490	49	0	10.0
	PA	437,933	13,310	592	3.0	327,530	5,900	307	1.8	61,880	5,003	149	8.1	36,884	2,670	47	7.2

Sources: Division of Public Health Preparedness, Erie County Department of Health; Bureau of Health Statistics and Research, PA Department of Health



# BIRTHS TO MOTHERS BETWEEN 15 AND 19 YEARS OF AGE

*Unknowns (Unkn) excluded in calculations of percentages of total live births for each specified category*

Year	Community	Total Population				White				Black				Hispanic (of any race)			
		Births	Count	Unkn	%	Births	Count	Unkn	%	Births	Count	Unkn	%	Births	Count	Unkn	%
2003	City of Erie	1,468	218	2	14.9	1,037	124	1	12.0	284	66	1	23.3	121	30	0	24.8
	Erie County	3,299	389	3	11.8	2,804	289	2	10.3	299	68	1	22.8	150	34	0	22.7
	PA	145,485	12,912	241	8.9	112,433	7,603	144	6.8	19,895	3,751	34	18.9	10,782	1,978	19	18.4
2004	City of Erie	1,527	218	0	14.3	1,046	120	0	11.5	331	71	0	21.5	127	31	0	24.4
	Erie County	3,280	364	0	11.1	2,730	259	0	9.5	349	75	0	21.5	164	37	0	22.6
	PA	144,194	12,766	250	8.9	108,896	6,965	118	6.4	19,943	3,873	57	19.5	11,527	2,126	23	18.5
2005	City of Erie	1,533	243	0	15.9	1,012	119	0	11.8	371	86	0	23.2	122	41	0	33.6
	Erie County	3,223	384	1	11.9	2,615	244	1	9.3	397	94	0	23.7	160	46	0	28.8
	PA	145,033	12,893	162	8.9	108,795	6,864	86	6.3	20,402	4,002	45	19.7	12,145	2,258	14	18.6
2006	City of Erie	1,655	245	1	14.8	1,096	120	0	10.9	395	97	0	24.6	137	27	0	19.7
	Erie County	3,441	390	3	11.3	2,810	255	1	9.1	415	101	0	24.3	166	32	0	19.3
	PA	148,706	13,580	180	9.1	109,749	7,098	103	6.5	21,535	4,218	47	19.6	13,212	2,437	10	18.5
2004-2006	City of Erie	4,715	706	1	15.0	3,154	359	0	11.4	1,097	254	0	23.2	386	99	0	25.6
	Erie County	9,944	1,138	4	11.4	8,155	758	2	9.3	1,161	270	0	23.3	490	115	0	23.5
	PA	437,933	39,239	592	9.0	327,530	20,927	307	6.4	61,880	12,093	149	19.6	36,884	6,821	47	18.5

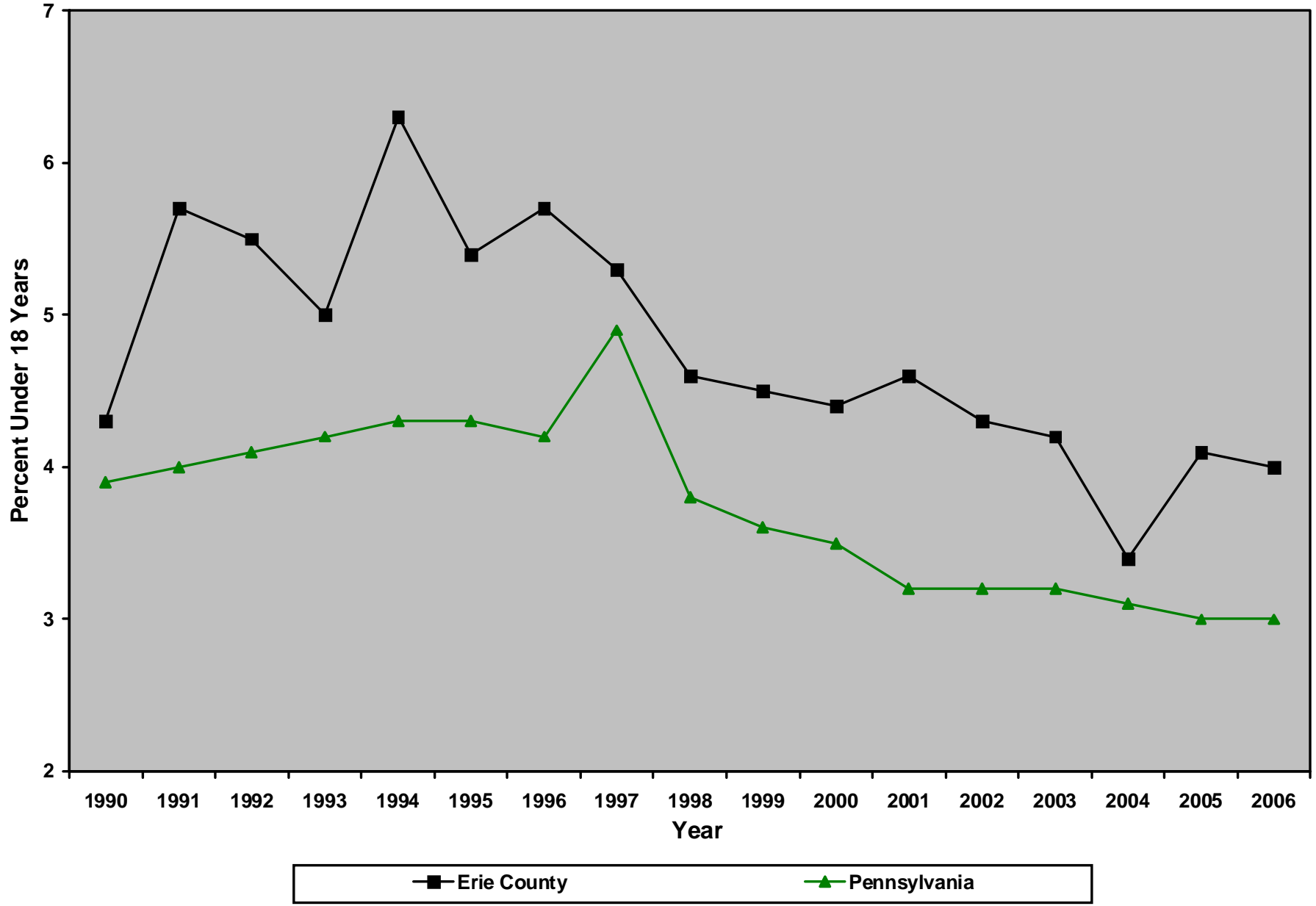
Sources: Division of Public Health Preparedness, Erie County Department of Health; Bureau of Health Statistics and Research, PA Department of Health



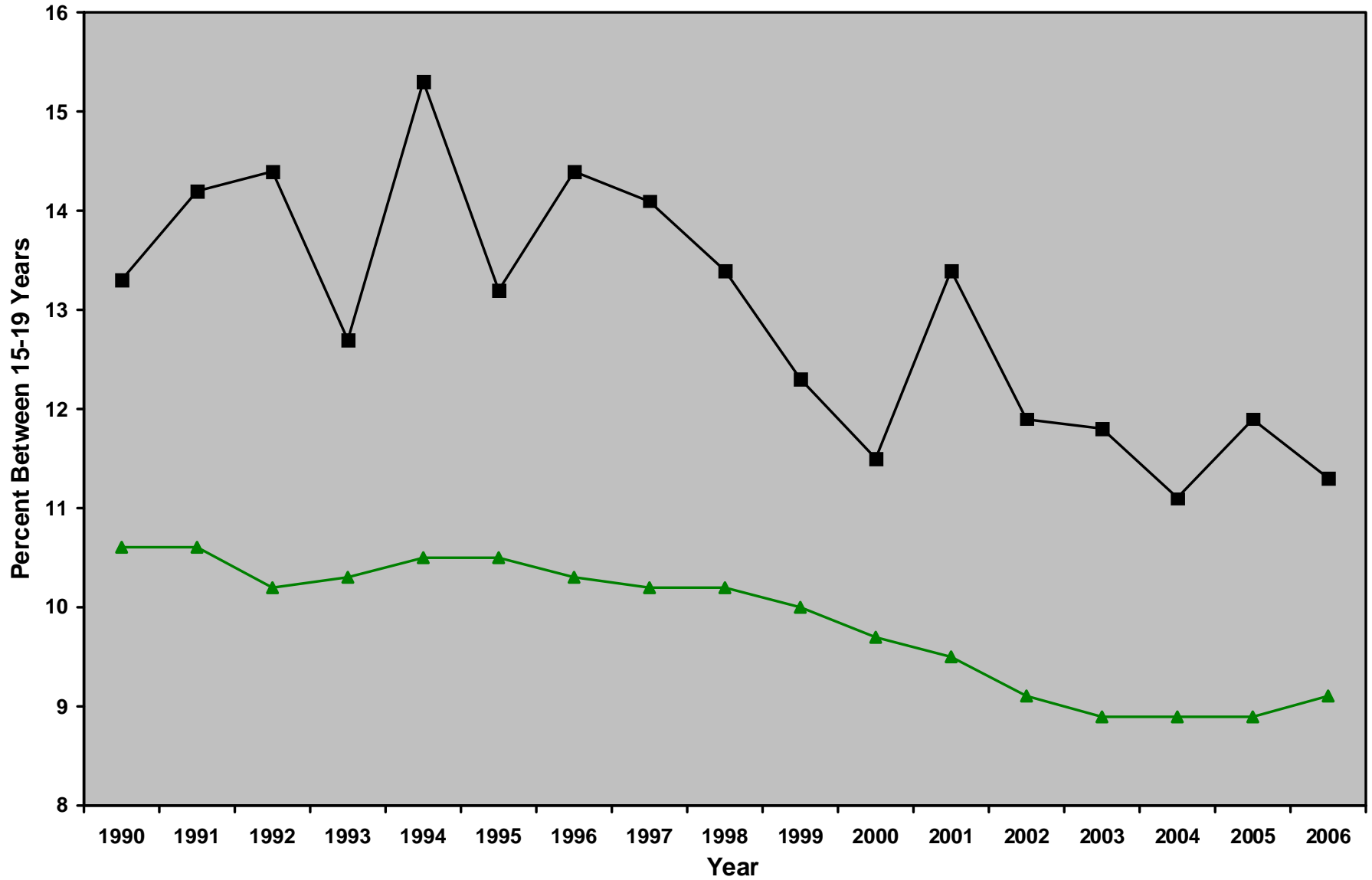
***Erie County and Pennsylvania Births to Mothers Under 18 and Between 15-19 Years of Age, 1990-2006***

<u>Year</u>	<u>Erie Births</u>	<u>Percent Under 18 Years of Age</u>		<u>Percent Between 15-19 Years of Age</u>	
		<u>Erie</u>	<u>PA</u>	<u>Erie</u>	<u>PA</u>
1990	4,211	4.3	3.9	13.3	10.6
1991	4,138	5.7	4.0	14.2	10.6
1992	4,091	5.5	4.1	14.4	10.2
1993	4,111	5.0	4.2	12.7	10.3
1994	3,929	6.3	4.3	15.3	10.5
1995	3,676	5.4	4.3	13.2	10.5
1996	3,674	5.7	4.2	14.4	10.3
1997	3,484	5.3	4.9	14.1	10.2
1998	3,541	4.6	3.8	13.4	10.2
1999	3,519	4.5	3.6	12.3	10.0
2000	3,471	4.4	3.5	11.5	9.7
2001	3,369	4.6	3.2	13.4	9.5
2002	3,372	4.3	3.2	11.9	9.1
2003	3,299	4.2	3.2	11.8	8.9
2004	3,280	3.4	3.1	11.1	8.9
2005	3,223	4.1	3.0	11.9	8.9
2006	3,441	4.0	3.0	11.3	9.1

Erie County and Pennsylvania Births to Mothers Under 18 Years of Age, 1990-2006



Erie County and Pennsylvania Births to Mothers 15-19 Years of Age, 1990-2006



■ Erie County      ▲ Pennsylvania

DATA SECTION FOUR

Births to Unmarried Mothers, 1990-2006

# BIRTHS TO UNMARRIED MOTHERS

*Unknowns (Unkn) excluded in calculations of percentages of total live births for each specified category*

Year	Community	Total Population				White				Black				Hispanic (of any race)			
		Births	Count	Unkn	%	Births	Count	Unkn	%	Births	Count	Unkn	%	Births	Count	Unkn	%
2003	City of Erie	1,468	769	12	52.8	1,037	469	7	45.5	284	236	5	84.6	121	72	0	59.5
	Erie County	3,299	1,361	26	41.6	2,804	1,036	21	37.2	299	246	5	83.7	150	83	0	55.3
	PA	145,485	48,985	1,177	33.9	112,433	28,794	743	25.8	19,895	14,901	192	75.6	10,782	6,361	103	59.6
2004	City of Erie	1,527	853	1	55.9	1,046	490	1	46.9	331	275	0	83.1	127	84	0	66.1
	Erie County	3,280	1,394	1	42.5	2,730	1,004	1	36.8	349	287	0	82.2	164	104	0	63.4
	PA	144,194	50,487	701	35.2	108,896	28,708	307	26.4	19,943	15,085	169	76.3	11,527	7,019	70	61.3
2005	City of Erie	1,533	873	0	56.9	1,012	481	0	47.5	371	303	0	81.7	122	89	0	73.0
	Erie County	3,223	1,377	2	42.8	2,615	946	2	36.2	397	321	0	80.9	160	104	0	65.0
	PA	145,033	52,849	421	36.5	108,795	29,960	259	27.6	20,402	15,699	39	77.1	12,145	7,480	20	61.7
2006	City of Erie	1,655	987	2	59.7	1,096	550	1	50.2	395	336	0	85.1	137	87	0	63.5
	Erie County	3,441	1,605	4	46.7	2,810	1,141	2	40.6	415	347	0	83.6	166	99	0	59.6
	PA	148,706	56,749	392	38.3	109,749	31,885	194	29.1	21,535	16,718	34	77.8	13,212	8,354	52	63.5
2004-2006	City of Erie	4,715	2,713	3	57.6	3,154	1,521	2	48.3	1,097	914	0	83.3	386	260	0	67.4
	Erie County	9,944	4,376	7	44.0	8,155	3,091	5	37.9	1,161	955	0	82.3	490	307	0	62.7
	PA	437,933	160,085	1,514	36.7	327,530	90,553	760	27.7	61,880	47,502	249	77.1	36,884	22,853	142	62.2

Sources: Division of Public Health Preparedness, Erie County Department of Health; Bureau of Health Statistics and Research, PA Department of Health



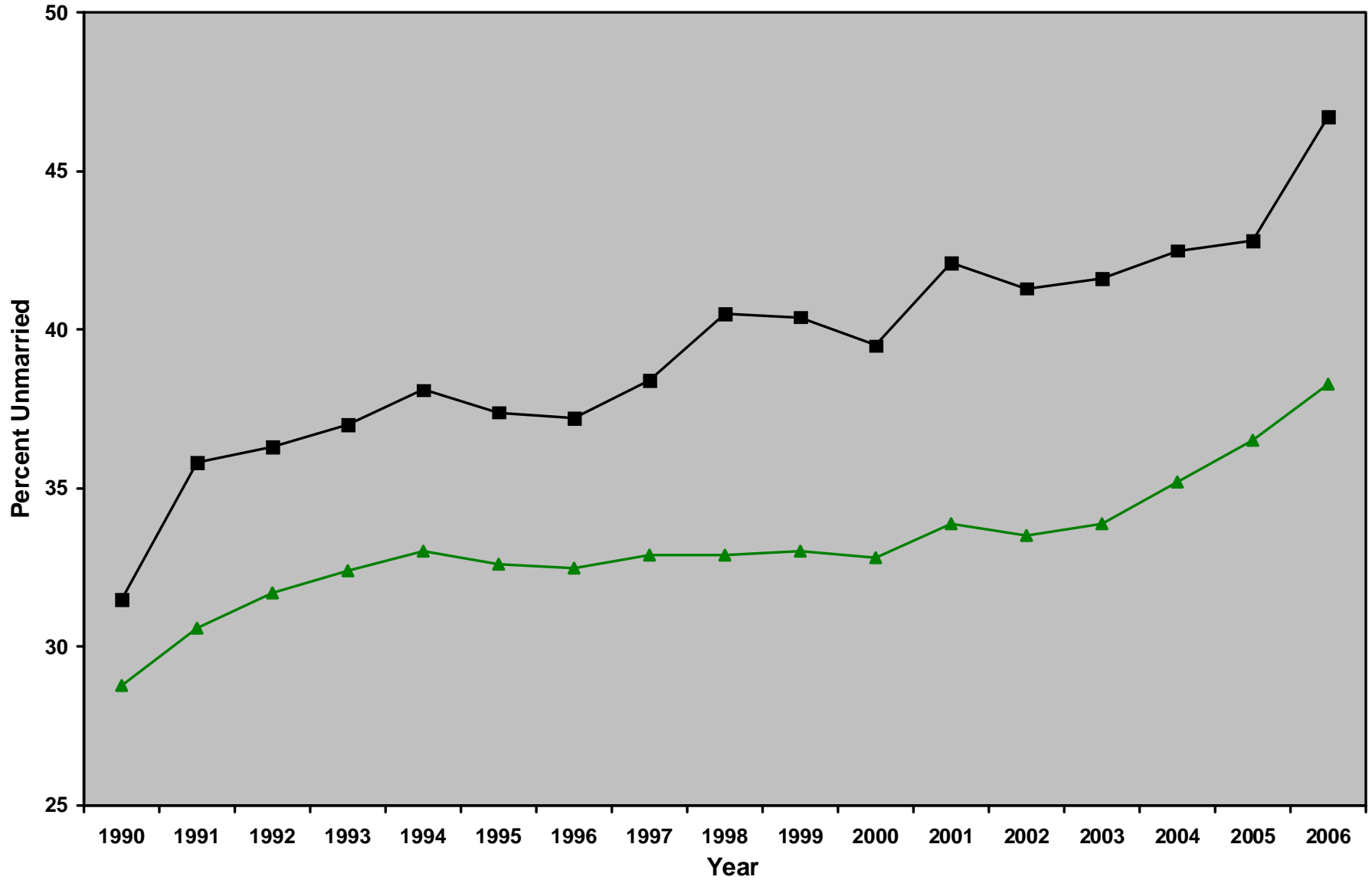


## ***Erie County and Pennsylvania Births to Unmarried Mothers, 1990-2006***

### Percent of Births to Unmarried Mothers

<u>Year</u>	<u>Erie Births</u>	<u>Erie</u>	<u>PA</u>
1990	4,211	31.5	28.8
1991	4,138	35.8	30.6
1992	4,091	36.3	31.7
1993	4,111	37.0	32.4
1994	3,929	38.1	33.0
1995	3,676	37.4	32.6
1996	3,674	37.2	32.5
1997	3,484	38.4	32.9
1998	3,541	40.5	32.9
1999	3,519	40.4	33.0
2000	3,471	39.5	32.8
2001	3,369	42.1	33.9
2002	3,372	41.3	33.5
2003	3,299	41.6	33.9
2004	3,280	42.5	35.2
2005	3,223	42.8	36.5
2006	3,441	46.7	38.3

Erie County and Pennsylvania Births to Unmarried Mothers, 1990-2006



■ Erie County      ▲ Pennsylvania

DATA SECTION FIVE

Prenatal Care During the First Trimester of Pregnancy

# MOTHER RECEIVED PRENATAL CARE DURING FIRST TRIMESTER OF PREGNANCY

Healthy People 2010 Goal: 90% of live births

*Unknowns (Unkn) excluded in calculations of percentages of total live births for each specified category*

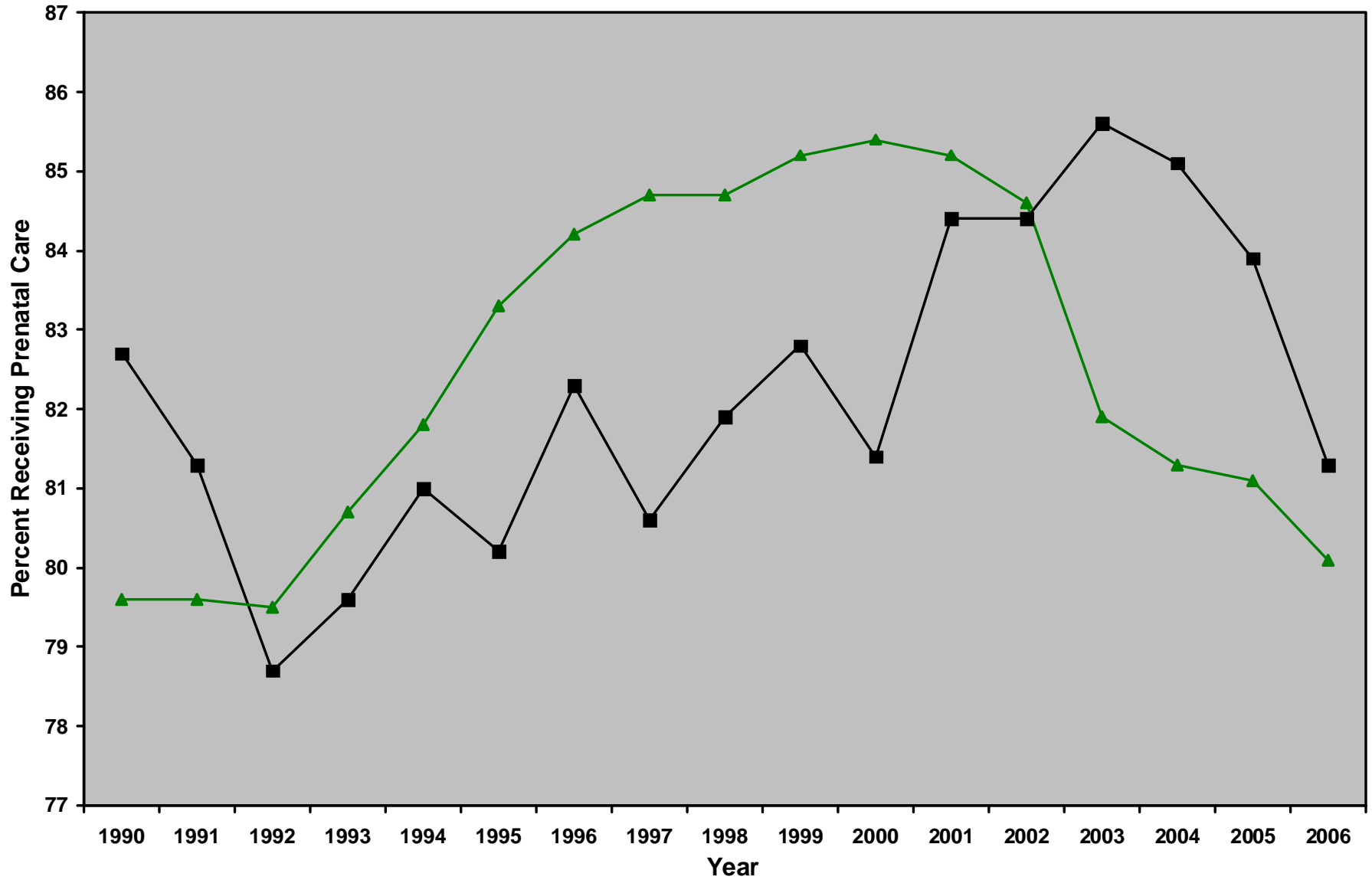
Year	Community	Total Population				White				Black				Hispanic (of any race)			
		Births	Count	Unkn	%	Births	Count	Unkn	%	Births	Count	Unkn	%	Births	Count	Unkn	%
2003	City of Erie	1,468	963	296	82.2	1,037	733	200	87.6	284	150	58	66.4	121	66	32	74.2
	Erie County	3,299	2,349	556	85.6	2,804	2,075	446	88.0	299	159	63	67.4	150	84	39	75.7
	PA	145,485	97,053	26,961	81.9	112,433	80,834	17,724	85.3	19,895	8,943	6,129	65.0	10,782	5,855	2,318	69.2
2004	City of Erie	1,527	1,083	200	81.6	1,046	780	145	86.6	331	201	38	68.6	127	79	23	76.0
	Erie County	3,280	2,454	397	85.1	2,730	2,105	338	88.0	349	216	38	69.5	164	103	26	74.6
	PA	144,194	97,316	24,526	81.3	108,896	79,307	15,900	85.2	19,943	9,637	5,306	65.8	11,527	6,123	2,435	67.3
2005	City of Erie	1,533	1,034	245	80.3	1,012	734	151	85.2	371	218	71	72.7	122	71	17	67.6
	Erie County	3,223	2,327	450	83.9	2,615	1,970	346	86.8	397	232	76	72.3	160	98	21	70.5
	PA	145,033	97,194	25,246	81.1	108,795	78,492	16,421	85.0	20,402	9,956	5,410	66.4	12,145	6,389	2,561	66.7
2006	City of Erie	1,655	1,092	230	76.6	1,096	776	148	81.9	395	212	60	63.3	137	83	18	69.7
	Erie County	3,441	2,419	467	81.3	2,810	2,056	374	84.4	415	224	64	63.8	166	104	21	71.7
	PA	148,706	96,697	27,936	80.1	109,749	77,027	18,181	84.1	21,535	10,273	5,864	65.6	13,212	6,855	2,870	66.3
2004-2006	City of Erie	4,715	3,209	675	79.4	3,154	2,290	444	84.5	1,097	631	169	68.0	386	233	58	71.0
	Erie County	9,944	7,200	1,314	83.4	8,155	6,131	1,058	86.4	1,161	672	178	68.4	490	305	68	72.3
	PA	437,933	291,207	77,708	80.8	327,530	234,826	50,502	84.8	61,880	29,866	16,580	65.9	36,884	19,367	7,866	66.7

## ***Erie County and Pennsylvania Births to Mothers Receiving Prenatal Care in the First Trimester, 1990-2006***

### Percent Prenatal Care in First Trimester

<u>Year</u>	<u>Erie Births</u>	<u>Erie</u>	<u>PA</u>
1990	4,211	82.7	79.6
1991	4,138	81.3	79.6
1992	4,091	78.7	79.5
1993	4,111	79.6	80.7
1994	3,929	81.0	81.8
1995	3,676	80.2	83.3
1996	3,674	82.3	84.2
1997	3,484	80.6	84.7
1998	3,541	81.9	84.7
1999	3,519	82.8	85.2
2000	3,471	81.4	85.4
2001	3,369	84.4	85.2
2002	3,372	84.4	84.6
2003	3,299	85.6	81.9
2004	3,280	85.1	81.3
2005	3,223	83.9	81.1
2006	3,441	81.3	80.1

Erie County and Pennsylvania Prenatal Care in First Trimester, 1990-2006



■ Erie County      ▲ Pennsylvania

DATA SECTION SIX

Smoking During Pregnancy, 1990-2006

# BIRTHS TO MOTHERS WHO DID NOT SMOKE DURING PREGNANCY

Healthy People 2010 Goal: 99% of live births

*Unknowns (Unkn) excluded in calculations of percentages of total live births for each specified category*

Year	Community	Total Population				White				Black				Hispanic (of any race)			
		Births	Count	Unkn	%	Births	Count	Unkn	%	Births	Count	Unkn	%	Births	Count	Unkn	%
2003	City of Erie	1,468	1,043	7	71.4	1,037	714	6	69.3	284	210	1	74.2	121	97	0	80.2
	Erie County	3,299	2,406	16	73.3	2,804	2,023	14	72.5	299	223	1	74.8	150	120	0	80.0
	PA	145,485	115,183	5,580	82.3	112,433	87,930	4,018	81.1	19,895	15,736	974	83.2	10,782	9,171	319	87.7
2004	City of Erie	1,527	1,043	9	68.7	1,046	701	5	67.3	331	222	3	67.7	127	95	0	74.8
	Erie County	3,280	2,372	15	72.6	2,730	1,973	9	72.5	349	235	3	67.9	164	124	0	75.6
	PA	144,194	113,419	6,015	82.1	108,896	84,787	4,067	80.8	19,943	15,496	1,129	82.4	11,527	9,671	493	87.6
2005	City of Erie	1,533	1,017	4	66.5	1,012	657	4	65.2	371	247	0	66.6	122	91	1	75.2
	Erie County	3,223	2,302	14	71.7	2,615	1,877	13	72.1	397	263	0	66.2	160	123	1	77.4
	PA	145,033	114,207	5,915	82.1	108,795	84,283	4,204	80.6	20,402	16,186	941	83.2	12,145	10,182	569	88.0
2006	City of Erie	1,655	1,100	11	66.9	1,096	713	3	65.2	395	259	5	66.4	137	109	1	80.1
	Erie County	3,441	2,455	17	71.7	2,810	2,015	7	71.9	415	277	6	67.7	166	135	1	81.8
	PA	148,706	117,454	6,201	82.4	109,749	85,158	4,240	80.7	21,535	17,204	1,058	84.0	13,212	11,166	653	88.9
2004-2006	City of Erie	4,715	3,160	24	67.4	3,154	2,071	12	65.9	1,097	728	8	66.9	386	295	2	76.8
	Erie County	9,944	7,129	46	72.0	8,155	5,865	29	72.2	1,161	775	9	67.3	490	382	2	78.3
	PA	437,933	345,080	18,131	82.2	327,530	254,228	12,511	80.7	61,880	48,886	3,128	83.2	36,884	31,019	1,715	88.2

Sources: Division of Public Health Preparedness, Erie County Department of Health; Bureau of Health Statistics and Research, PA Department of Health



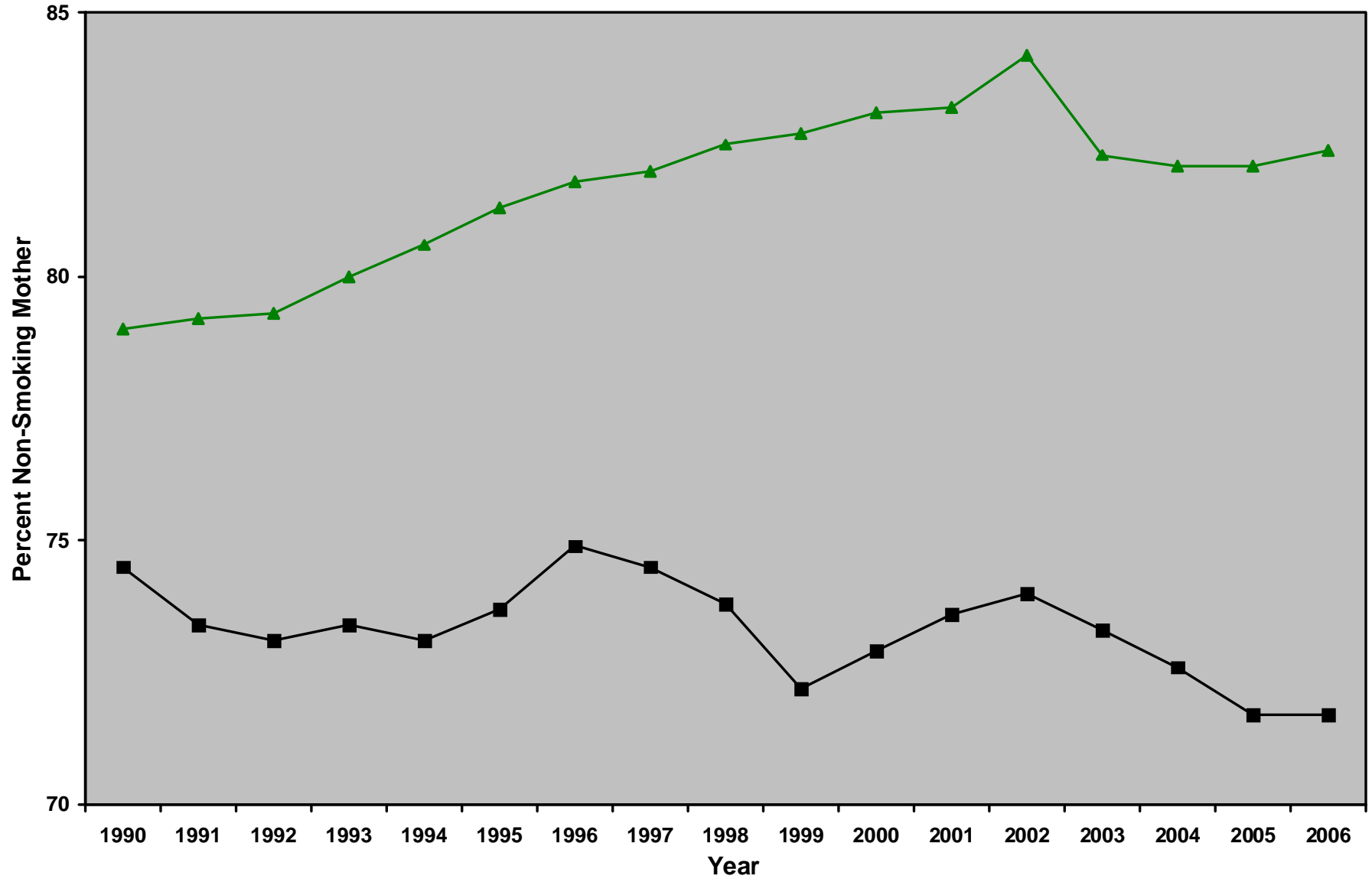


## ***Erie County and Pennsylvania Births to Mothers Who Did Not Smoke During Pregnancy, 1990-2006***

### Percent of Non-Smoking Mothers

<u>Year</u>	<u>Erie Births</u>	<u>Erie</u>	<u>PA</u>
1990	4,211	74.5	79.0
1991	4,138	73.4	79.2
1992	4,091	73.1	79.3
1993	4,111	73.4	80.0
1994	3,929	73.1	80.6
1995	3,676	73.7	81.3
1996	3,674	74.9	81.8
1997	3,484	74.5	82.0
1998	3,541	73.8	82.5
1999	3,519	72.2	82.7
2000	3,471	72.9	83.1
2001	3,369	73.6	83.2
2002	3,372	74.0	84.2
2003	3,299	73.3	82.3
2004	3,280	72.6	82.1
2005	3,223	71.7	82.1
2006	3,441	71.7	82.4

Erie County and Pennsylvania Births to Non-Smoking Mothers, 1990-2006



DATA SECTION SEVEN

Infants Born at Low and Very Low Birth Weight, 1990-2006

# INFANTS BORN AT LOW BIRTH WEIGHT (UNDER 2,500 GRAMS OR 5 LBS. 9 OZS.)

Healthy People 2010 Goal: 5% of live births

*Unknowns (Unkn) excluded in calculations of percentages of total live births for each specified category*

Year	Community	Total Population				White				Black				Hispanic (of any race)			
		Births	Count	Unkn	%	Births	Count	Unkn	%	Births	Count	Unkn	%	Births	Count	Unkn	%
2003	City of Erie	1,468	120	1	8.2	1,037	75	0	7.2	284	30	1	10.6	121	11	0	9.1
	Erie County	3,299	266	1	8.1	2,804	213	0	7.6	299	33	1	11.1	150	14	0	9.3
	PA	145,485	11,737	618	8.1	112,433	7,780	282	6.9	19,895	2,795	173	14.2	10,782	957	29	8.9
2004	City of Erie	1,527	153	0	10.0	1,046	94	0	9.0	331	41	0	12.4	127	17	0	13.4
	Erie County	3,280	276	1	8.4	2,730	216	1	7.9	349	41	0	11.7	164	20	0	12.2
	PA	144,194	11,706	719	8.2	108,896	7,665	266	7.1	19,943	2,673	227	13.6	11,527	1,059	43	9.2
2005	City of Erie	1,533	143	0	9.3	1,012	78	0	7.7	371	46	0	12.4	122	20	0	16.4
	Erie County	3,223	252	2	7.8	2,615	177	2	6.8	397	49	0	12.3	160	24	0	15.0
	PA	145,033	12,045	755	8.3	108,795	7,917	248	7.3	20,402	2,761	280	13.7	12,145	1,068	52	8.8
2006	City of Erie	1,655	183	1	11.1	1,096	110	0	10.0	395	56	1	14.2	137	18	0	13.1
	Erie County	3,441	313	2	9.1	2,810	236	1	8.4	415	57	1	13.8	166	20	0	12.0
	PA	148,706	12,479	1,373	8.5	109,749	8,023	726	7.4	21,535	2,980	272	14.0	13,212	1,138	118	8.7
2004-2006	City of Erie	4,715	479	1	10.2	3,154	282	0	8.9	1,097	143	1	13.0	386	55	0	14.2
	Erie County	9,944	841	5	8.5	8,155	629	4	7.7	1,161	147	1	12.7	490	64	0	13.1
	PA	437,933	36,230	2,847	8.3	327,530	23,605	1,240	7.2	61,880	8,414	779	13.8	36,884	3,265	213	8.9

Sources: Division of Public Health Preparedness, Erie County Department of Health; Bureau of Health Statistics and Research, PA Department of Health



# INFANTS BORN AT VERY LOW BIRTH WEIGHT (UNDER 1,500 GRAMS OR 3 LBS. 5 OZS.)

Healthy People 2010 Goal: 0.9% of live births

*Unknowns (Unkn) excluded in calculations of percentages of total live births for each specified category*

Year	Community	Total Population				White				Black				Hispanic (of any race)			
		Births	Count	Unkn	%	Births	Count	Unkn	%	Births	Count	Unkn	%	Births	Count	Unkn	%
2003	City of Erie	1,468	29	1	2.0	1,037	18	0	1.7	284	9	1	3.2	121	3	0	2.5
	Erie County	3,299	51	1	1.5	2,804	39	0	1.4	299	10	1	3.4	150	3	0	2.5
	PA	145,485	2,312	618	1.6	112,433	1,449	282	1.3	19,895	643	173	3.3	10,782	NA	NA	NA
2004	City of Erie	1,527	31	0	2.0	1,046	15	0	1.4	331	13	0	3.9	127	3	0	2.4
	Erie County	3,280	51	1	1.6	2,730	35	1	1.3	349	13	0	3.7	164	3	0	1.8
	PA	144,194	2,282	719	1.6	108,896	1,390	266	1.3	19,943	658	227	3.3	11,527	NA	NA	NA
2005	City of Erie	1,533	26	0	1.7	1,012	14	0	1.4	371	8	0	2.2	122	4	0	3.3
	Erie County	3,223	46	2	1.4	2,615	30	2	6.8	397	10	0	2.5	160	5	0	3.1
	PA	145,033	2,272	755	1.6	108,795	1,372	248	1.3	20,402	644	280	3.2	12,145	NA	NA	NA
2006	City of Erie	1,655	28	1	1.7	1,096	11	0	1.0	395	15	1	3.8	137	2	0	1.5
	Erie County	3,441	60	2	1.7	2,810	42	1	1.5	415	15	1	3.6	166	2	0	1.2
	PA	148,706	2,394	1,373	1.6	109,749	1,369	726	1.3	21,535	756	272	3.6	13,212	NA	NA	NA
2004-2006	City of Erie	4,715	85	1	1.8	3,154	40	0	1.3	1,097	36	1	3.3	386	9	0	2.3
	Erie County	9,944	157	5	1.6	8,155	107	4	1.3	1,161	38	1	3.3	490	10	0	2.0
	PA	437,933	6,948	2,847	1.6	327,530	4,131	1,240	1.3	61,880	2,058	779	3.4	36,884	NA	NA	NA

NA = Not available

Sources: Division of Public Health Preparedness, Erie County Department of Health; Bureau of Health Statistics and Research, PA Department of Health



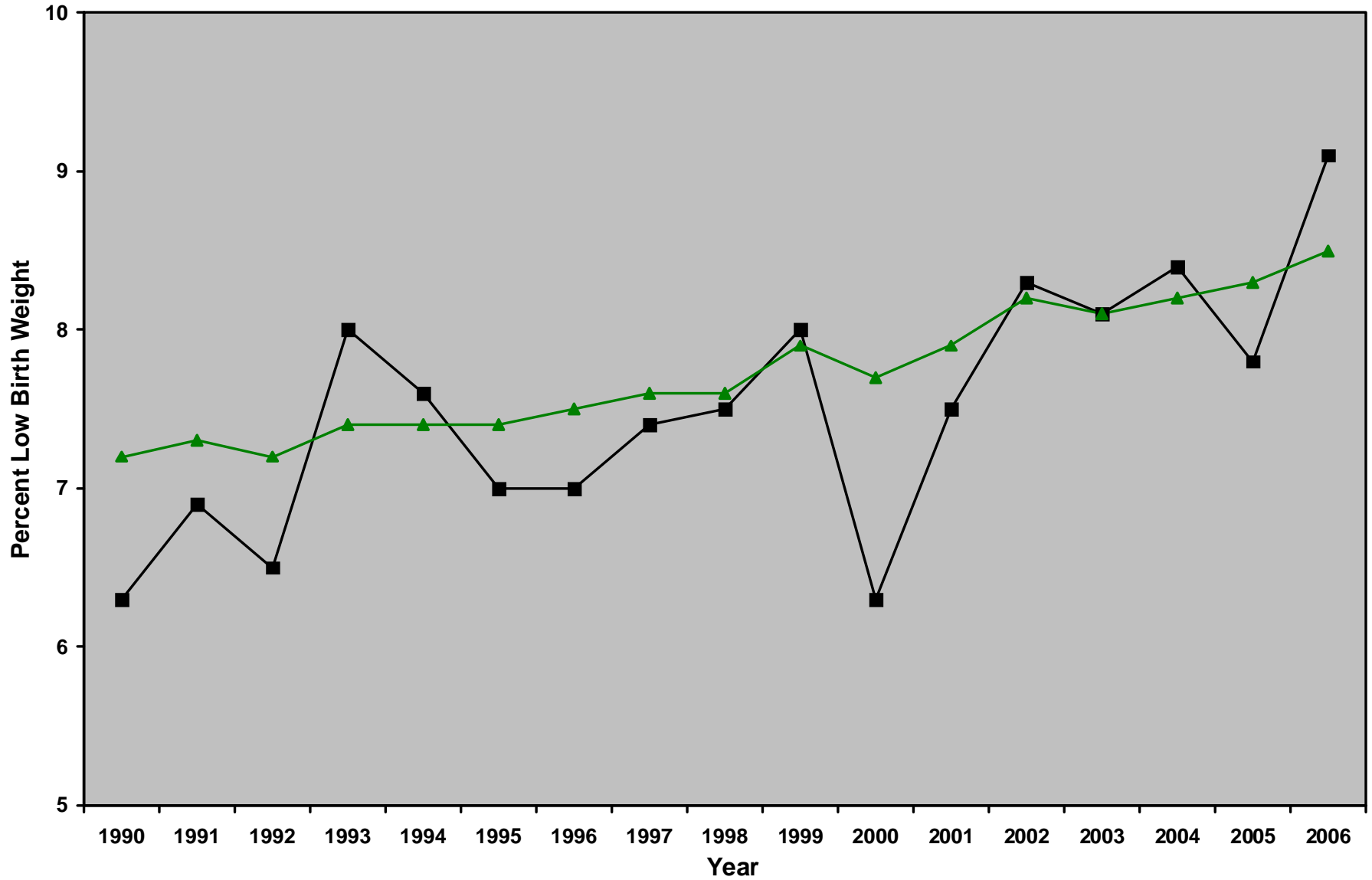
## ***Erie County and Pennsylvania Low and Very Low Birth Weight Infants, 1990-2006***

### Percent Low Birth Weight (< 2,500 grams)

### Percent Very Low Birth Weight (<1,500 grams)

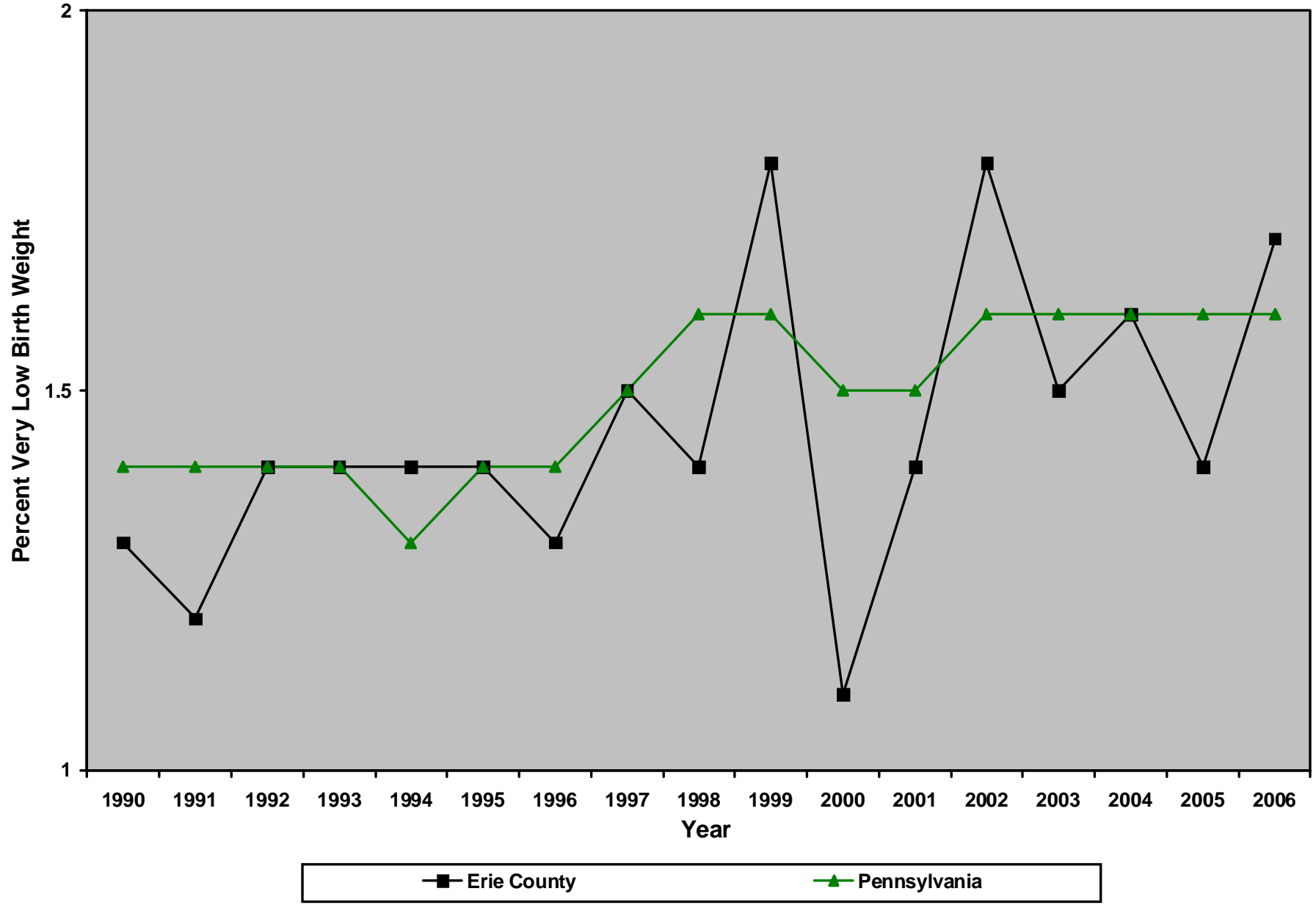
<u>Year</u>	<u>Erie Births</u>	<u>Percent Low Birth Weight (&lt; 2,500 grams)</u>		<u>Percent Very Low Birth Weight (&lt;1,500 grams)</u>	
		<u>Erie</u>	<u>PA</u>	<u>Erie</u>	<u>PA</u>
1990	4,211	6.3	7.2	1.3	1.4
1991	4,138	6.9	7.3	1.2	1.4
1992	4,091	6.5	7.2	1.4	1.4
1993	4,111	8.0	7.4	1.4	1.4
1994	3,929	7.6	7.4	1.4	1.3
1995	3,676	7.0	7.4	1.4	1.4
1996	3,674	7.0	7.5	1.3	1.4
1997	3,484	7.4	7.6	1.5	1.5
1998	3,541	7.5	7.6	1.4	1.6
1999	3,519	8.0	7.9	1.8	1.6
2000	3,471	6.3	7.7	1.1	1.5
2001	3,369	7.5	7.9	1.4	1.5
2002	3,372	8.3	8.2	1.8	1.6
2003	3,299	8.1	8.1	1.5	1.6
2004	3,280	8.4	8.2	1.6	1.6
2005	3,223	7.8	8.3	1.4	1.6
2006	3,441	9.1	8.5	1.7	1.6

Erie County and Pennsylvania Low Birth Weight Infants, 1990-2006



■ Erie County      ▲ Pennsylvania

Erie County and Pennsylvania Very Low Birth Weight Infants, 1990-2006





DATA SECTION EIGHT

Infant and Neonatal Deaths, 1990-2006

# INFANT DEATHS (UNDER 1 YEAR OF AGE)

Healthy People 2010 Goal: Infant death rate of 4.5 per 1,000 live births

*Infant death rates are per 1,000 live births for each specified category*

Year	Community	Total Population				White				Black				Hispanic (of any race)			
		Births	Deaths	Rate		Births	Deaths	Rate		Births	Deaths	Rate		Births	Deaths	Rate	
2003	City of Erie	1,468	16	10.9		1,037	5	2.5		284	10	35.2		121	1	8.3	
	Erie County	3,299	18	5.5		2,804	7	4.8		299	10	33.4		150	1	6.7	
	PA	145,485	1,060	7.3		112,433	702	6.2		19,895	320	16.1		10,782	83	7.7	
2004	City of Erie	1,527	13	8.5		1,046	9	8.6		331	3	9.1		127	0	0.0	
	Erie County	3,280	19	5.8		2,730	14	5.1		349	4	11.5		164	0	0.0	
	PA	144,194	1,026	7.1		108,896	682	6.3		19,943	299	15.0		11,527	93	8.1	
2005	City of Erie	1,533	14	9.1		1,012	11	10.9		371	2	5.4		122	0	0.0	
	Erie County	3,223	23	7.1		2,615	19	7.3		397	3	7.6		160	0	0.0	
	PA	145,033	1,047	7.2		108,795	680	6.3		20,402	320	15.7		12,145	86	7.1	
2006	City of Erie	1,655	23	13.9		1,096	11	10.0		395	11	27.8		137	2	14.6	
	Erie County	3,441	33	9.6		2,810	21	7.5		415	11	26.5		166	2	12.1	
	PA	148,706	1,122	7.5		109,749	689	6.3		21,535	367	17.0		13,212	77	5.8	
2004-2006	City of Erie	4,715	50	10.6		3,154	31	9.8		1,097	16	14.6		386	2	5.2	
	Erie County	9,944	75	7.5		8,155	54	6.6		1,161	18	15.5		490	2	4.1	
	PA	437,933	3,195	7.3		327,530	2,051	6.3		61,880	986	15.9		36,884	256	6.9	

Rates based on less than 10 events are statistically unreliable

Sources: Division of Public Health Preparedness, Erie County Department of Health; Bureau of Health Statistics and Research, PA Department of Health



# NEONATAL DEATHS (UNDER 28 DAYS OF AGE)

Healthy People 2010 Goal: Neonatal death rate of 2.9 per 1,000 live births

Neonatal death rates are per 1,000 live births for each specified category

Year	Community	Total Population				White				Black				Hispanic (of any race)			
		Births	Deaths	Rate		Births	Deaths	Rate		Births	Deaths	Rate		Births	Deaths	Rate	
2003	City of Erie	1,468	9	6.1		1,037	3	9.6		284	6	21.1		121	0	0.0	
	Erie County	3,299	10	3.0		2,804	4	1.4		299	6	20.1		150	0	0.0	
	PA	145,485	775	5.3		112,433	509	4.5		19,895	235	11.8		10,782	58	5.4	
2004	City of Erie	1,527	6	3.9		1,046	3	2.9		331	2	6.0		127	0	0.0	
	Erie County	3,280	10	3.0		2,730	7	2.6		349	2	5.7		164	0	0.0	
	PA	144,194	692	4.8		108,896	453	4.2		19,943	205	10.3		11,527	70	6.1	
2005	City of Erie	1,533	14	9.1		1,012	11	10.9		371	2	5.4		122	0	0.0	
	Erie County	3,223	16	5.0		2,615	13	5.0		397	3	7.6		160	0	0.0	
	PA	145,033	742	5.1		108,795	483	4.4		20,402	220	10.8		12,145	62	5.1	
2006	City of Erie	1,655	11	6.6		1,096	5	4.6		395	6	15.2		137	1	7.3	
	Erie County	3,441	17	4.9		2,810	11	3.9		415	6	14.5		166	1	6.0	
	PA	148,706	806	5.4		109,749	479	4.4		21,535	278	12.9		13,212	55	4.2	
2004-2006	City of Erie	4,715	26	5.5		3,154	15	4.8		1,097	10	9.1		386	1	2.6	
	Erie County	9,944	43	4.3		8,155	31	3.8		1,161	11	9.5		490	1	2.0	
	PA	437,933	2,240	5.1		327,530	1,415	4.3		61,880	703	11.4		36,884	187	5.1	

Rates based on less than 10 events are statistically unreliable

Sources: Division of Public Health Preparedness, Erie County Department of Health; Bureau of Health Statistics and Research, PA Department of Health



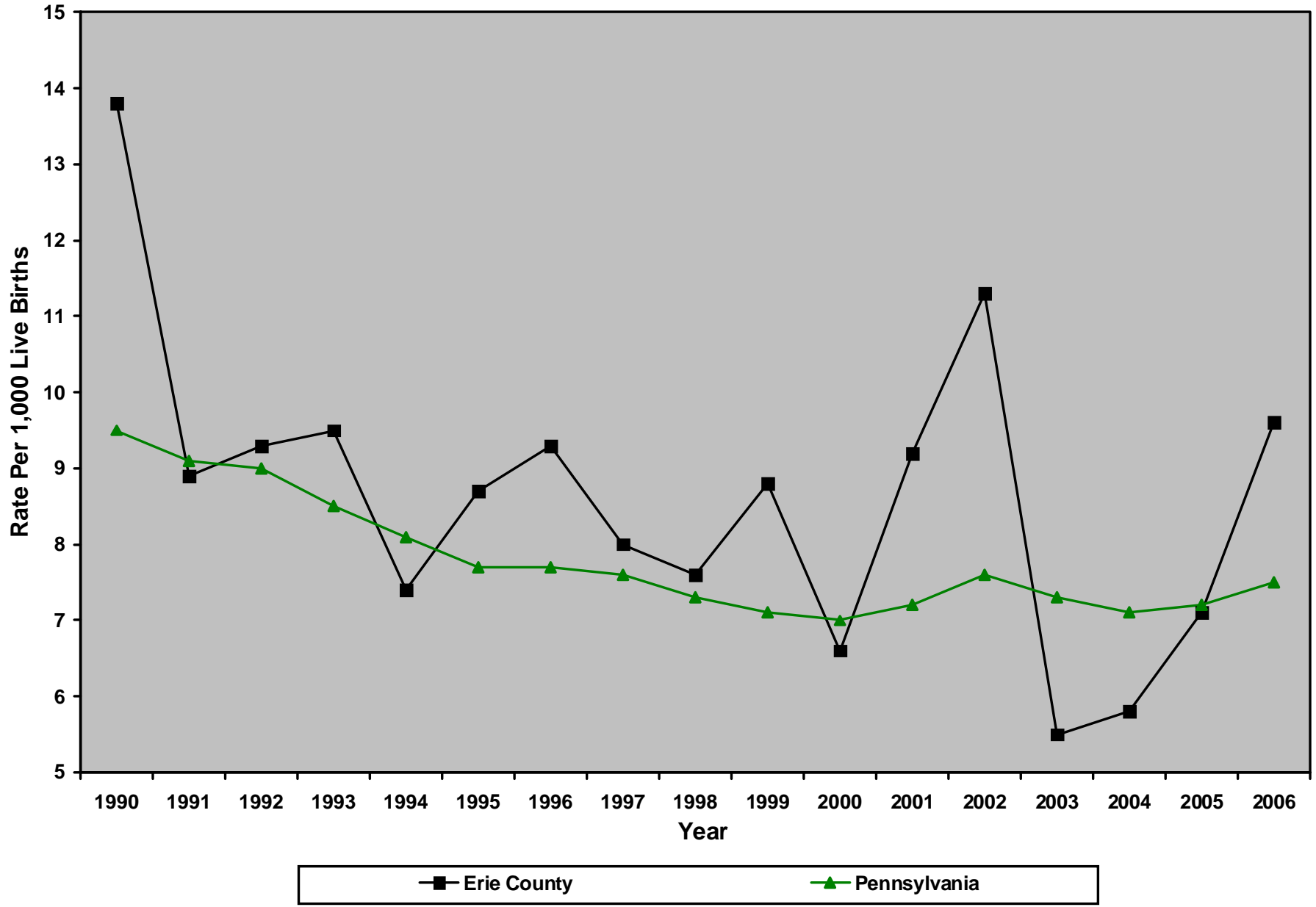
## ***Erie County and Pennsylvania Infant and Neonatal Death Rates, 1990-2006***

### Infant Death Rate Per 1,000 Live Births

### Neonatal Death Rate Per 1,000 Live Births

<u>Year</u>	<u>Erie Births</u>	<u>Erie</u>	<u>PA</u>	<u>Erie</u>	<u>PA</u>
1990	4,211	13.8	9.5	9.0	6.3
1991	4,138	8.9	9.1	6.3	5.9
1992	4,091	9.3	9.0	6.4	6.0
1993	4,111	9.5	8.5	5.1	5.7
1994	3,929	7.4	8.1	5.1	5.4
1995	3,676	8.7	7.7	7.1	5.3
1996	3,674	9.3	7.7	6.5	5.4
1997	3,484	8.0	7.6	5.5	5.3
1998	3,541	7.6	7.3	5.1	5.1
1999	3,519	8.8	7.1	6.3	5.0
2000	3,471	6.6	7.0	4.0	4.9
2001	3,369	9.2	7.2	7.4	5.1
2002	3,372	11.3	7.6	9.2	5.6
2003	3,299	5.5	7.3	3.0	5.3
2004	3,280	5.8	7.1	3.0	4.8
2005	3,223	7.1	7.2	5.0	5.1
2006	3,441	9.6	7.5	4.9	5.4

Erie County and Pennsylvania Infant Death Rates, 1990-2006



### Erie County and Pennsylvania Neonatal Death Rates, 1990-2006

